

CATALOG E

# SCHRADE POCKET KNIVES

---

---



TRADE *EVERLASTINGLY SHARP* MARK

SCHRADE CUTLERY Co.

WALDEN, N. Y.

CATALOG E

# SCHRADE POCKET KNIVES

TRADE *EVERLASTINGLY SHARP* MARK

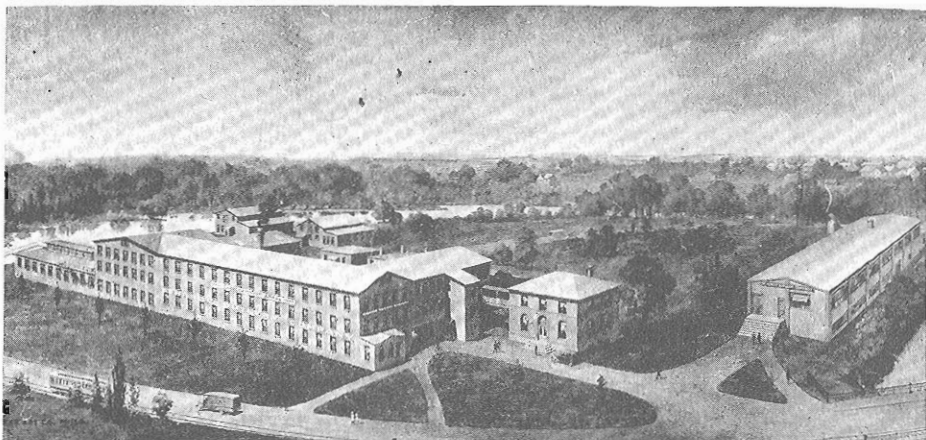
SCHRADE CUTLERY CO.

Factories

WALDEN, N. Y.

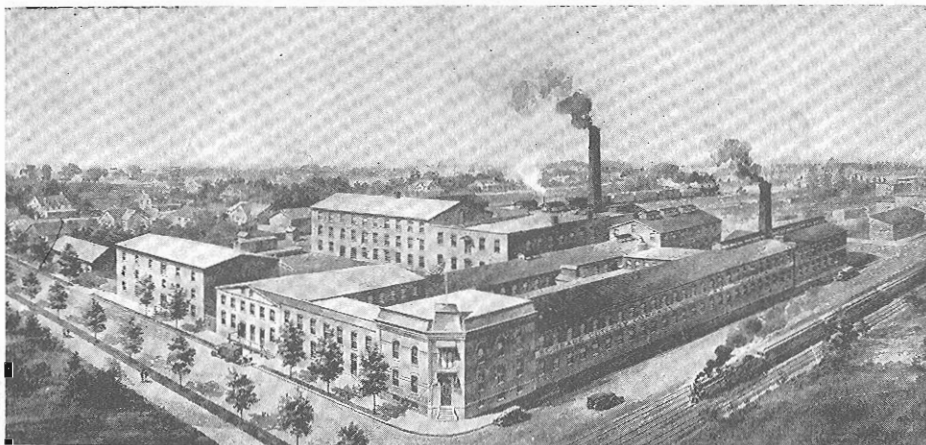
MIDDLETOWN, N. Y.

Executive Offices—Walden, N. Y.



WORKS AT WALDEN, N. Y.

ESTABLISHED 1904



WORKS AT MIDDLETOWN, N. Y.

ESTABLISHED 1917

---

---

## CATALOG ARRANGEMENT

Note to Trade . . . . .	Pages 4-6
Plate showing Styles, Shapes and trade names of Blades . . . . .	Page 7
Key to Numbering System . . . . .	Pages 8-9
General Line of Pen and Pocket Knives . . . . .	Pages 10-50
Schrade Safety Push Button Knives . . . . .	Pages 51-57
Instructions to Operate Push Button Knives . . . . .	Page 57
Stainless Steel Pen and Pocket Knives . . . . .	Pages 58-60
Pen and Pocket Knife Assortments . . . . .	Pages 61-67
Knife Emblems and Advertising data . . . . .	Page 68
Suggestions to Salesmen . . . . .	Page 69
Index . . . . .	Pages 70-71

---

---

### ACCURACY IMPORTANT

Accuracy is necessary when referring to pattern or style numbers illustrated and described in this catalog, either in making inquiries or issuing specifications. Please state full number, including figures, fractions and letters, as the full number is required in all cases to identify the desired knife.

## *To the Trade:*

**T**HIS catalog has been prepared with the utmost care to present SCHRADE Pocket Knives to the dealers and give complete information to those interested in our line; therefore, we hope it will be kept for reference and used.

### FOUNDED—1904.

Our company was organized in 1904 in a modest way, and the Management who established the works and company are still in active control. The growth of the Schrade Cutlery Company speaks for the progressive policy and sound business principles employed, as in the twenty-two years of our existence our company has grown from a very small plant to one of the leading American manufacturers of pocket knives, with two large plants shown by the illustrations on page 2.

### POLICY.

From the beginning our plan has been to manufacture a line of staple patterns of pen and pocket knives possessed of the very highest quality that could be produced by using the BEST materials and employing the most highly skilled workmen on a day-work basis, which system, together with careful supervision, avoids and prevents work being done in a half manner as is so often the case where work is done on a piece-work basis; also to use the most up to date machinery, tools, fixtures and equipment, with the result that our pocket knives are recognized as the best American made pocket knives by the largest and most exacting jobbers, dealers, cutlery specialists and users throughout the United States and Canada or wherever our knives are sold and used.

### ORGANIZATION.

The entire organization of the Schrade Cutlery Company consists of practical men who are leaders in their line, and is the result of a long period of training, starting with a small staff and gradually enlarging it until at the present time we have our plants in control of specially trained executives, engineers, departmental heads and foremen, most of whom are stockholders in the company, thereby making the quality of SCHRADE Pocket Knives a personal and individual responsibility; all of which is reflected in the uniformity and excellence of our product.

### MATERIALS.

All raw materials used in the manufacture of our pocket knives are selected from the highest grades to be found in the markets, and only those are adopted that have proven by long usage to be the most suitable for the purpose. The reputation of SCHRADER quality sold under our **TRADE EVERLASTINGLY SHARP MARK** is principally based on the special cutlery steel used in every blade manufactured by us, which is guaranteed to give satisfaction. Likewise the springs of our pocket knives are manufactured from a special alloy steel, which by long trial has proven to be the toughest and most suitable spring steel known.

We especially mention blade steel and spring steel as they are the two vital raw materials used in the manufacture of pocket knives, but all other materials are selected with equal care, resulting in the **BEST MADE** Pocket Knives.

### METHOD OF MANUFACTURE.

Our method of manufacture represents a scientific engineering system that we have been developing and improving for a period of over twenty-two years, until at the present time we have practically achieved perfection in our product.

When we established our factory we started with the plan to manufacture a staple line of pocket knives with the component parts manufactured on an interchangeable basis, which had not previously been done in the pocket knife industry. This we have diligently and faithfully kept in mind, and are using the most elaborate equipment of punches, dies and special tools to be found in any cutlery factory in the world. Each and every manufacturing detail has been the subject of most careful thought and consideration, and no factory equipment has been spared in mastering the manufacturing problems.

Next in importance to selecting the right steels for blades and springs is the designing and heat treatment of the same. We were one of the first manufacturers who years ago adopted the use of scientific heat measuring instruments, so that the manufacture of good blades and springs became an exact science with us. All the special machinery and equipment used in our factories are of our own design and creation and are used exclusively by us. In producing the same we employ continuously a large staff of expert tool makers and mechanics in our completely equipped tool rooms, as the accuracy we require in the manufacture of the parts of our pocket knives cannot be produced with equipment purchased in the open market.

---

---

## QUALITY—UNIFORM AND UNSURPASSED.

SCHRADE Pocket Knives are possessed of a uniform standard of quality, which is recognized by all. This is due to the careful selection of the proper raw material, the symmetrical and perfect design of the blades, springs and handles, which are designed with a view to producing artistic pocket knives with properly balanced springs that will give long service, and to our individual and exclusive system of manufacture, especially to our skillful grinding and sharpening of the cutting edges; all of which is the means to the end—

TRADE **EVERLASTINGLY SHARP** MARK

## OUR GUARANTEE

We will replace without charge all knives made by us that are actually imperfect, either as to workmanship or material. Knives that are worn out or abused we will not replace.

Yours for service,

SCHRADE CUTLERY COMPANY.

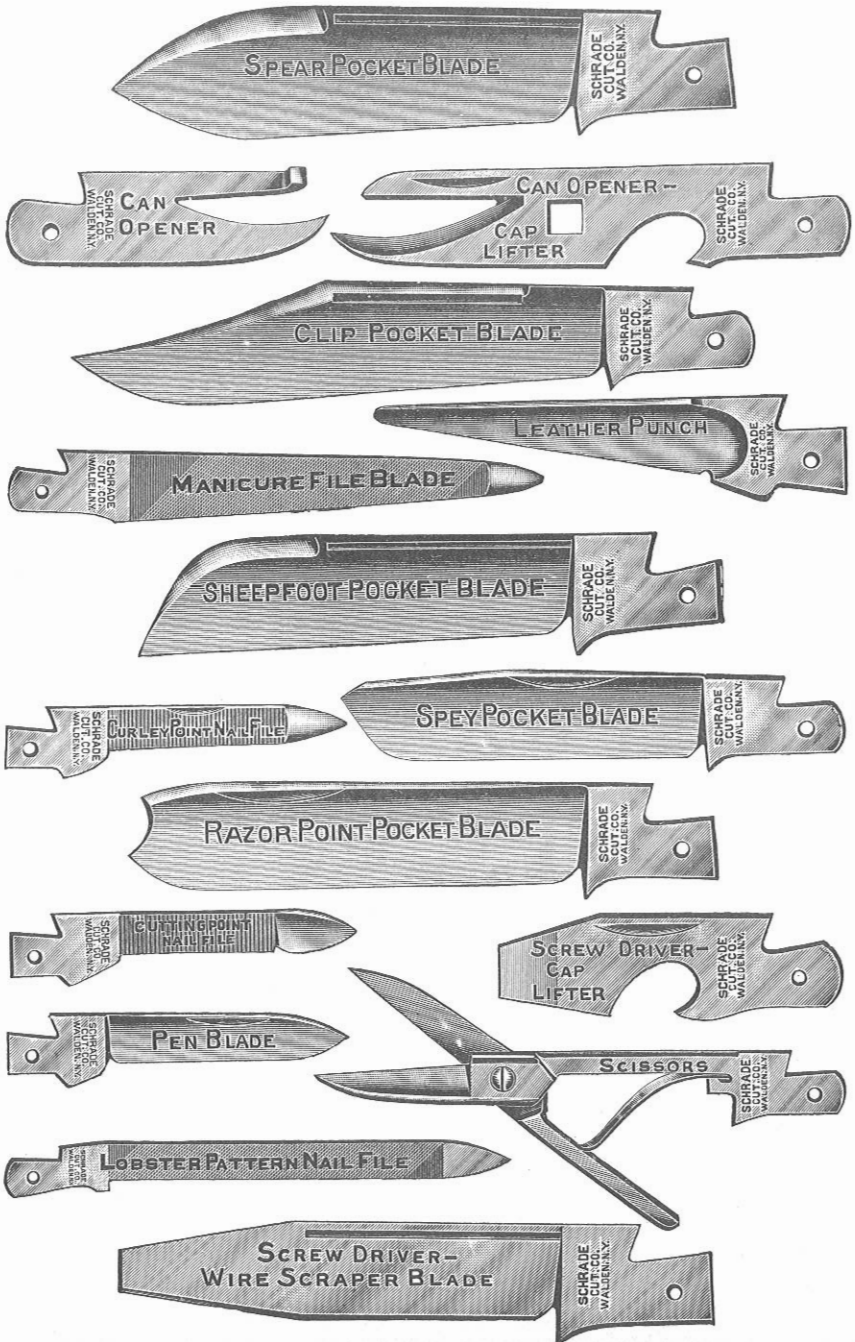
---

---

## IMPORTANT TO DEALERS

At times the loss of sales in retail stores results from the lack of knowledge of what constitutes a defective knife. "Arguments with customers are not advocated" but a knife that has been abused by the owner, through improper sharpening, rough usage, lack of oil on the joints, badly rusted knives, or knives that are worn out, should not be exchanged. The loss of a sale means the loss of profit and by a reasonable explanation a customer can be convinced that he should buy a new knife. We know of no other line where the guarantee is abused to the same extent as in pocket knives. Worn-out pocket knives should not be returned to the factory for repair. Sell the owner of the old knife a new one. Also see page 69.

STYLES, SHAPES & TRADE NAMES OF BLADES





## KEY TO NUMBERING SYSTEM

- (a). The first figure of a number indicates the number of blades in the knife, as follows:—

- 1 represents a 1 blade knife
- 2 represents a 2 blade knife (both blades in one end)
- 3 represents a 3 blade knife (3 blades in one end)
- 7 represents a 2 blade knife (1 blade in each end)
- 8 represents a 3 blade knife (2 blades in one end and 1 blade in the other end)
- 9 represents a 4 blade knife (2 blades in each end)

- (b). The second and third figures of a number indicate the pattern or style of knife:

**Example!** In No. 2013 the second and third figures indicate our Easy Opener Pattern as per the cut in this catalogue.  
In No. 7113 the second and third figures indicate our Sleeveboard Pattern as per the cut in this catalogue.

- (c). The last figure of a number indicates the kind of handle, as follows:—

- |             |                   |                 |
|-------------|-------------------|-----------------|
| 1—Cocobola  | 4—Celluloid       | 7—Stained Bone  |
| 2—Ebony     | 5—White Bone      | 8—Buffalo Horn  |
| 3—Bone Stag | 6—Mother of Pearl | 9—Miscellaneous |

- (d). The kind or color of celluloid handles is indicated by a letter or letters after the fourth figure (which is always No. 4 for celluloid handles.) as follows:

7434C, indicates Cocobola Celluloid, etc.

The following is a list of celluloid colors, with letters indicating same, in alphabetical order:—

- |                           |                           |
|---------------------------|---------------------------|
| AC—Assorted Colors        | J—Red-White-Amber Striped |
| AP—Abalone Pearl          | K—Brown Lined Cream       |
| B—Black (Ebony)           | M—Marine Pearl            |
| BLUE—Blue Pearl           | MB—Mottled Blue           |
| BP—Black Pearl            | MR—Mottled Red            |
| BRNZ—Bronze               | O—Onyx                    |
| C—Cocobola                | P—Smoked Pearl            |
| GL—Goldaleur              | PP—Persian Pearl          |
| GP—Golden Pearl           | S—Tortoise Shell          |
| G—Green Pearl             | US—Red-White-Blue Striped |
| H—Black and White Striped | W—(White) Ivory           |
| HORN—Horn                 | X—Mottled Green           |

- (e). Miscellaneous handles are indicated by a letter or letters after the figure 9, as follows: 7439GSIL, indicates a nickel silver handle, etc.

KEY TO NUMBERING SYSTEM (Continued)

The following is a list of miscellaneous handles, with letters indicating same:—

BR—Solid Brass	GS—Genuine Stag
GM—Gun Metal	GSIL—Nickel Silver
GOLD—12 Karat Gold Plate	SS—Sterling Silver

- (f). A fraction at the end of a number indicates the kind of blade substituted for a spear pocket blade, as follows:—

**Example!** No. 2157 $\frac{1}{4}$  would indicate our regular No. 2157 with a Spey blade substituted for Spear blade.  
No. 2173 $\frac{3}{4}$  would indicate our regular No. 2173 with a Clip blade substituted for Spear blade, etc.

The following is a list of fractions used:—

$\frac{1}{4}$ —Spey Pocket	$\frac{3}{4}$ —Clip Pocket
$\frac{1}{2}$ —Sheepfoot Pocket	$\frac{7}{8}$ —Razor Point Pocket

- (g). Patterns which are made up in Shadow, Tip and Bolster styles are indicated as follows:—

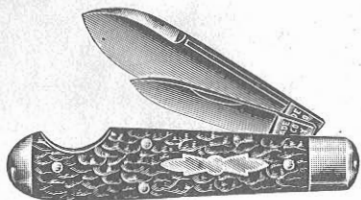
A Shadow knife is a knife with the handles extending to the ends of the inner metal linings and has neither small nickel silver tips, bolsters or caps.

To indicate a knife with nickel silver tips add the letter T to the shadow number. Example: 7113 indicates a shadow Sleeveboard knife, No. 7113T equals the same knife but with nickel silver tips.

To indicate a bolster knife, add the letter B. Example: No. 7113B equals the same knife with bolsters or caps added.

The above only applies on the knives that are made in this way, such as Sleeveboard patterns, Senator patterns, etc.

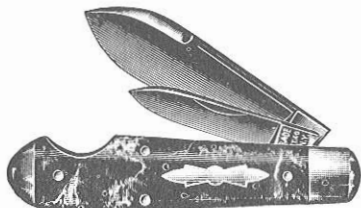
- (h). "S" prefixed to a number indicates a *Special* combination or finish.  
(i). "SS" prefixed to a number indicates a knife with Stainless Steel Blades and Springs.  
(j). "CHAIN" or "CH" added to a number indicates a knife with a chain.  
(k). "EO" added to a number indicates an Easy Opener knife, that is usually manufactured without Easy Opener notch hollow.  
(l). "LB" added to a number indicates the substitution of a Leather Borer or Punch for a cutting blade.  
(m). "SHACKLE" or "SHACK" added to a number indicates a knife with a shackle, which is used to attach knife to watch chain.  
(n). "B" prefixed to a number indicates a knife with brass linings that is usually manufactured with steel linings.  
(o). "F" prefixed to a number indicates a knife with nail file blade that is usually manufactured with cutting blades.



No. 2013

Easy Opener Jack, 3<sup>5</sup>/<sub>8</sub> inches long; 2 blades; brass lined; nickel silver bolsters, caps and shield; cleaned inside; large blade crocus polished on one side; Bone Stag handle.

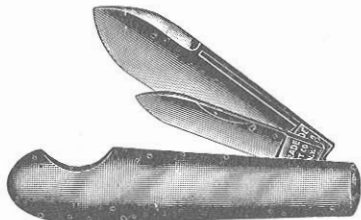
Cocobola handle . . . . . No. 2011  
Ebony handle . . . . . No. 2012



No. 2014S

Easy Opener Jack, 3<sup>5</sup>/<sub>8</sub> inches long; 2 blades; brass lined; nickel silver bolsters, caps and shield; cleaned inside; large blade crocus polished on one side; Tortoise Shell Celluloid handle.

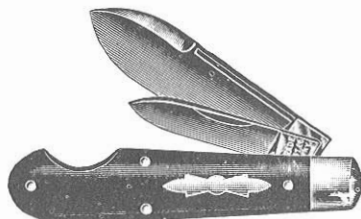
Green Pearl Pyralin handle . No. 2014G  
Smoked Pearl Celluloid handle No. 2014P  
Ivory Celluloid handle . . . . No. 2014W  
Mottled Green Celluloid handle No. 2014X  
Assorted Celluloid handles . . No. 2014AC



No. 2019BR

Easy Opener Jack, 3<sup>5</sup>/<sub>8</sub> inches long; 2 blades; cleaned inside; large blade crocus polished on one side; Solid Brass composition handle.

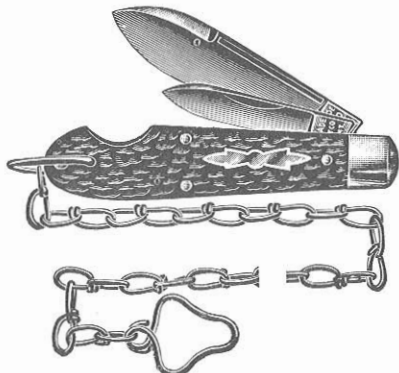
*Packed half dozen in a box*



No. 2022

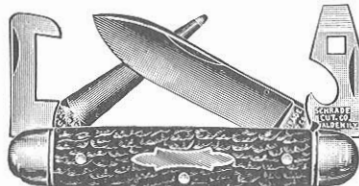
Easy Opener Jack, 3<sup>5</sup>/<sub>8</sub> inches long; 2 blades; brass lined; nickel silver bolsters and shield; cleaned inside; large blade crocus polished on one side; Ebony handle.

Cocobola handle . . . . . No. 2021  
Bone Stag handle . . . . . No. 2023



No. 2023 Chain

Easy Opener Jack with Chain, 3<sup>5</sup>/<sub>8</sub> inches long; 2 blades; brass lined; nickel silver bolsters and shield; nickered steel chain; cleaned inside; large blade crocus polished on one side; Bone Stag handle.

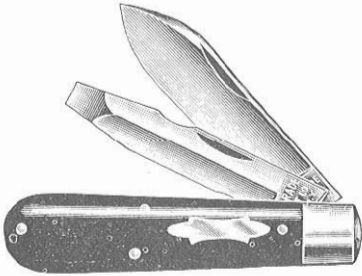


No. 9033

Automobile Knife, Equal End pattern, 3<sup>5</sup>/<sub>8</sub> inches long; 4 blades (auto chain hook, leather punch, screw driver-cap lifter and spear pocket); brass lined; nickel silver bolsters and shield; cleaned inside; spear pocket blade crocus polished on one side; Bone Stag handle.

Solid Nickel Silver handle . No. 9039GSIL

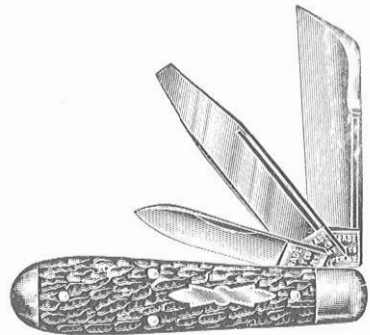
*Cuts half size*



No. 2042SD

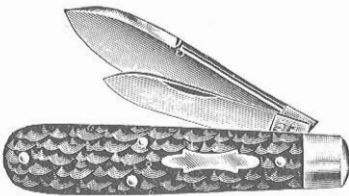
ELECTRICIAN'S KNIFE (LOCK BACK),  $3\frac{3}{4}$  inches long; one large blade and a lock back screw driver-wire scraper blade; brass lined; nickel silver bolsters and shield; cleaned inside; large blade crocus polished on one side; Ebony handle.

Same as above with Nickel Silver Shackle . . . . . No. 2042SDShackle



No. 3053 $\frac{1}{2}$

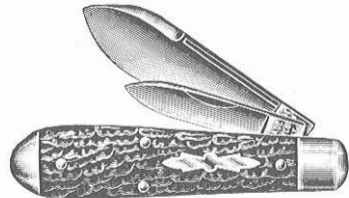
Electrician's Knife,  $3\frac{5}{8}$  inches long; 3 blades (screw driver-wire scraper, pen and sheepfoot pocket); brass lined; nickel silver bolsters, caps and shield; cleaned inside; pocket blade crocus polished on one side; Bone Stag handle.



No. 2043

Jack Knife,  $3\frac{3}{4}$  inches long; 2 blades; Brass lined; nickel silver bolsters and shield; cleaned inside; large blade crocus polished on one side; Bone Stag handle.

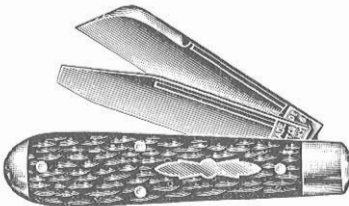
Ebony handle . . . . . No. 2042  
Pen and clip pocket blades; Bone Stag handle . . . . . No. 2043 $\frac{3}{4}$



No. 2063

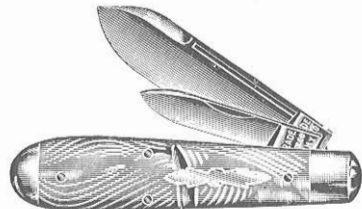
Jack Knife,  $3\frac{5}{8}$  inches long; 2 blades; brass lined; nickel silver bolsters, caps and shield; cleaned inside; large blade crocus polished on one side; Bone Stag handle.

Cocobola handle . . . . . No. 2061  
Ebony handle . . . . . No. 2062



No. 2053 $\frac{1}{2}$

Electrician's Knife,  $3\frac{5}{8}$  inches long; 2 blades (screw driver-wire scraper and sheep-foot pocket); brass lined; nickel silver bolsters, caps and shield; cleaned inside; pocket blade crocus polished on one side; Bone Stag handle.



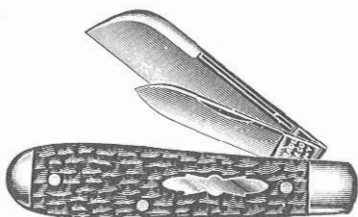
No. 2064P

Jack Knife,  $3\frac{5}{8}$  inches long; 2 blades; brass lined; nickel silver bolsters, caps and shield; cleaned inside; large blade crocus polished on one side; Smoked Pearl Celluloid handle.

Tortoise Shell Celluloid handle . No. 2064S  
Ivory Celluloid handle . . . . . No. 2064W  
Assorted Celluloid handles . . . No. 2064AC

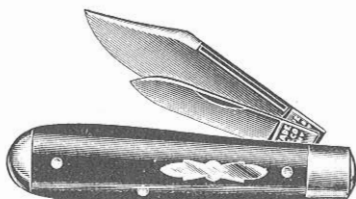
Packed half dozen in a box

Cuts half size



No. 2063 1/2

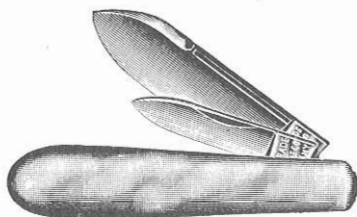
Jack Knife, 3 5/8 inches long; 2 blades; brass lined; nickel silver bolsters, caps and shield; cleaned inside; large blade crocus polished on one side; Bone Stag handle.



No. 2062 3/4

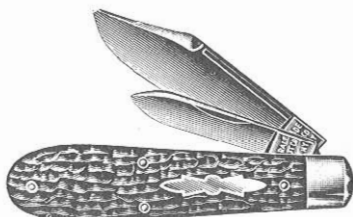
Jack Knife, 3 5/8 inches long; 2 blades; brass lined; nickel silver bolsters, caps and shield; cleaned inside; large blade crocus polished on one side; Ebony handle.

Cocobola handle . . . . . No. 2061 3/4  
 Bone Stag handle . . . . . No. 2063 3/4



No. 2069BR

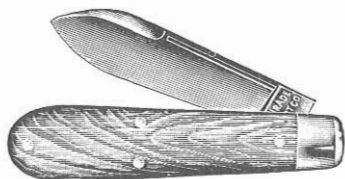
Jack Knife, 3 5/8 inches long; 2 blades; cleaned inside; large blade crocus polished on one side; Solid Brass composition handle. Pen and clip pocket blades . No. 2069 3/4 BR



No. 2073 3/4

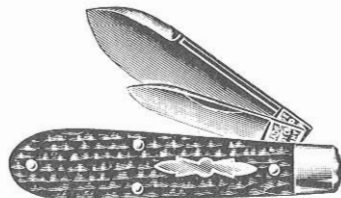
Jack Knife, 3 5/8 inches long; 2 blades; brass lined; nickel silver bolsters and shield; cleaned inside; large blade crocus polished on one side; Bone Stag handle.

Cocobola handle . . . . . No. 2071 3/4  
 Ebony handle . . . . . No. 2072 3/4



No. 1091

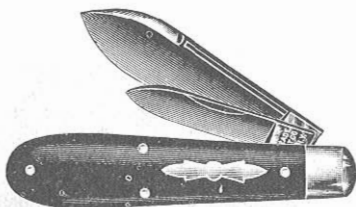
Jack Knife, 3 5/8 inches long; 1 blade; steel lined; steel bolsters; black inside; glaze finished blade; Cocobola handle.



No. 2093

Jack Knife, 3 5/8 inches long; 2 blades; steel lined; steel bolsters; nickel silver shield; cleaned inside; glaze finished blades; Bone Stag handle.

Cocobola handle . . . . . No. 2091  
 Ebony handle . . . . . No. 2092



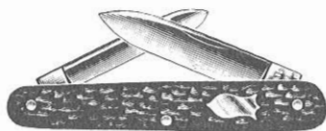
No. 2072

Jack Knife, 3 5/8 inches long; 2 blades; brass lined; nickel silver bolsters and shield; cleaned inside; large blade crocus polished on one side; Ebony handle.

Cocobola handle . . . . . No. 2071  
 Bone Stag handle . . . . . No. 2073

*Packed half dozen in a box*

*Cuts half size*

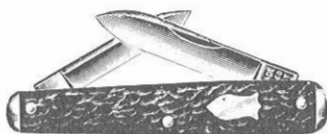


No. 7113

Sleeveboard pattern, 3 3/8 inches long; 2 blades; brass lined; nickel silver shield; cleaned inside; large blade crocus polished on one side; Bone Stag handle.

Without Shield

Glaze finished blades . . . . . No. S7113



No. 7113T

Sleeveboard pattern, 3 3/8 inches long; 2 blades; brass lined; nickel silver tips and shield; cleaned inside; large blade crocus polished on one side; Bone Stag handle.

Without Shield

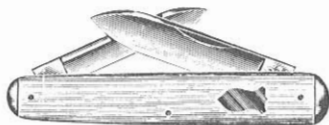
Glaze finished blades . . . . . No. S7113T



No. 7114P

Sleeveboard pattern, 3 3/8 inches long; 2 blades; brass lined; cleaned inside; large blade crocus polished on one side; Smoked Pearl Celluloid handle.

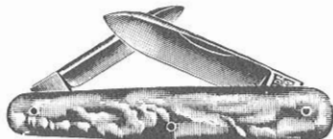
- Abalone Pearl Pyralin handle . . . . . No. 7114AP
- Black Celluloid handle . . . . . No. 7114B
- Golden Pearl Celluloid handle . . . . . No. 7114GP
- Green Pearl Pyralin handle . . . . . No. 7114G
- Horn Pyralin handle . . . . . No. 7114Horn
- Tortoise Shell Celluloid handle . . . . . No. 7114S
- Ivory Celluloid handle . . . . . No. 7114W
- Assorted Celluloid handles . . . . . No. 7114AC



No. 7114WT

Sleeveboard pattern, 3 3/8 inches long; 2 blades; brass lined; nickel silver tips and shield; cleaned inside; large blade crocus polished on one side; Ivory Celluloid handle.

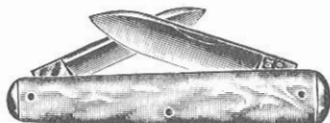
- Black Celluloid handle . . . . . No. 7114BT
- Golden Pearl Celluloid handle . . . . . No. 7114GPT
- Horn Pyralin handle . . . . . 7114HornT
- Smoked Pearl Celluloid handle . . . . . 7114PT
- Tortoise Shell Celluloid handle . . . . . 7114ST
- Mottled Green Celluloid handle . . . . . 7114XT
- Assorted Celluloid handles . . . . . 7114ACT



No. 7116

Sleeveboard pattern, 3 3/8 inches long; 2 blades; brass lined; cleaned inside; large blade crocus polished on one side; Mother of Pearl handle.

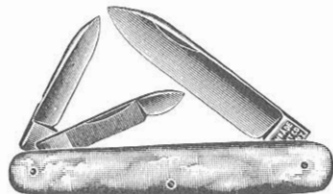
Buffalo Horn handle . . . . . No. 7118



No. 7116T

Sleeveboard pattern, 3 3/8 inches long; 2 blades; brass lined; nickel silver tips; cleaned inside; large blade crocus polished on one side; Mother of Pearl handle.

Buffalo Horn handle with shield . . . . . No. 7118T

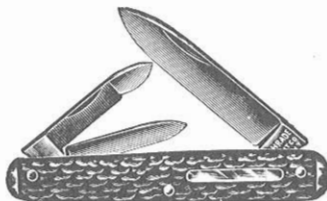


No. 8116

Sleeveboard pattern, 3 3/8 inches long; 3 blades; brass lined; cleaned inside; large blade crocus polished on one side; Mother of Pearl handle.

Ivory Celluloid handle . . . . . No. 8114W

Packed half dozen in a box



No. 8113T

Sleeveboard pattern, 3 3/8 inches long; 3 blades; brass lined; nickel silver tips and shield; cleaned inside; large blade crocus polished on one side; Bone Stag handle.

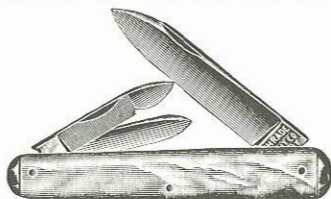
Cuts half size



No. 8114PT

Sleeveboard pattern,  $3\frac{3}{8}$  inches long; 3 blades; brass lined; nickel silver tips and shield; cleaned inside; large blade crocus polished on one side; Smoked Pearl Celluloid handle.

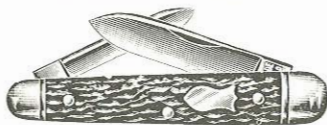
Tortoise Shell Celluloid handle . No. 8114ST



No. 8116T

Sleeveboard pattern,  $3\frac{3}{8}$  inches long; 3 blades; brass lined; nickel silver tips; cleaned inside; large blade crocus polished on one side; Mother of Pearl handle.

Buffalo Horn handle with shield No. 8118T



No. 7113B

Sleeveboard pattern,  $3\frac{3}{8}$  inches long; 2 blades; brass lined; nickel silver bolsters and shield; cleaned inside; large blade crocus polished on one side; Bone Stag handle.

Without Shield

Glaze finished blades . . . . . No. S7113B



No. 7114PB

Sleeveboard pattern,  $3\frac{3}{8}$  inches long; 2 blades; brass lined; nickel silver bolsters and shield; cleaned inside; large blade crocus polished on one side; Smoked Pearl Celluloid handle.

Black Celluloid handle . . . No. 7114BB

Green Pearl Pyralin handle No. 7114GB

Horn Pyralin handle . . . . No. 7114HornB

Brown Lined Cream Pyralin handle 7114KB

Tortoise Shell Celluloid handle 7114SB

Ivory Celluloid handle . . . No. 7114WB

Assorted Celluloid handles. No. 7114ACB

*Packed half dozen in a box*



No. 7116B

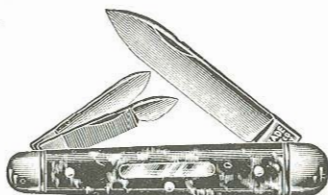
Sleeveboard pattern,  $3\frac{3}{8}$  inches long; 2 blades; brass lined; nickel silver bolsters; cleaned inside; large blade crocus polished on one side; Mother of Pearl handle.

Buffalo Horn handle with shield No. 7118B



No. 8113B

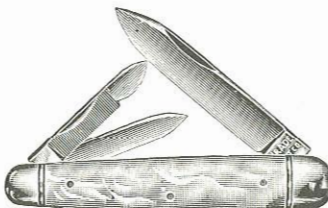
Sleeveboard pattern,  $3\frac{3}{8}$  inches long; 3 blades; brass lined; nickel silver bolsters and shield; cleaned inside; large blade crocus polished on one side; Bone Stag handle.



No. 8114SB

Sleeveboard pattern,  $3\frac{3}{8}$  inches long; 3 blades; brass lined; nickel silver bolsters and shield; cleaned inside; large blade crocus polished on one side; Tortoise Shell Celluloid handle.

Smoked Pearl Celluloid handle No. 8114PB

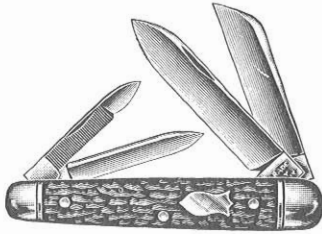


No. 8116B

Sleeveboard pattern,  $3\frac{3}{8}$  inches long; 3 blades; brass lined; nickel silver bolsters; cleaned inside; large blade crocus polished on one side; Mother of Pearl handle.

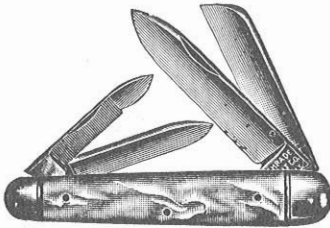
Buffalo Horn handle with shield No. 8118B

*Cuts half size*



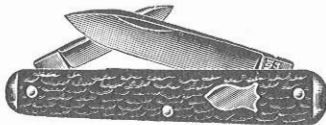
No. 9113B

Sleeveboard pattern, 3 3/8 inches long; 4 blades; brass lined; nickel silver bolsters and shield; cleaned inside; large spear blade crocus polished on one side; Bone Stag handle.



No. 9116B

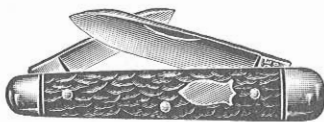
Sleeveboard pattern, 3 3/8 inches long; 4 blades; brass lined; nickel silver bolsters; cleaned inside; large spear blade crocus polished on one side; Mother of Pearl handle.



No. 7243T

Sleeveboard pattern, 3 3/8 inches long; pen and extra long spear pocket blades; brass lined; nickel silver tips and shield; cleaned inside; large blade crocus polished on one side; Bone Stag handle.

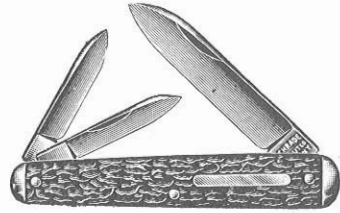
Black and White Pyralin handle No. 7244HT



No. 7243B

Sleeveboard pattern, 3 3/8 inches long; pen and extra long spear pocket blades; brass lined; nickel silver bolsters and shield; cleaned inside; large blade crocus polished on one side; Bone Stag handle.

Packed half dozen in a box

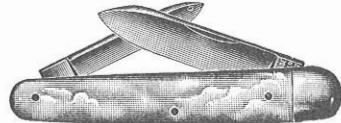


No. 8313T

Sleeveboard pattern, 3 3/8 inches long; 3 blades (2 cutting pens and large spear pocket); brass lined; nickel silver tips and shield; cleaned inside; large blade crocus polished on one side; Bone Stag handle.

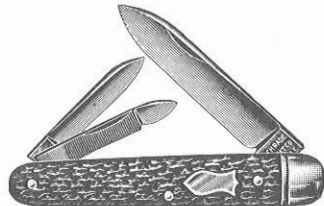
Large nickel silver bolsters substituted for tips . . . . . No. 8313B

Large nickel silver bolsters substituted for tips; no shield; Mother of Pearl handle . . . . . No. 8316B



No. 7326

Sleeveboard pattern, 3 3/8 inches long; two blades; brass lined; nickel silver bolsters at one end; cleaned inside; large blade crocus polished on one side; Mother of Pearl handle.



No. 8323

Sleeveboard pattern, 3 3/8 inches long; 3 blades; brass lined; nickel silver bolsters at one end; nickel silver shield; cleaned inside; large blade crocus polished on one side; Bone Stag handle.

Tortoise Shell Celluloid handle . . . . . No. 8324S



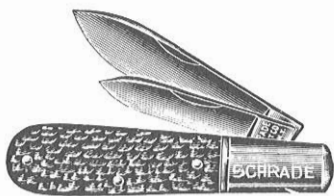
No. 115S

Barlow Knife, 3 3/8 inches long; one blade; steel lined; steel bolsters; black inside; glaze finished blade; Bone Stag handle.

One clip blade . . . . . No. 115 3/4 S

Cuts half size



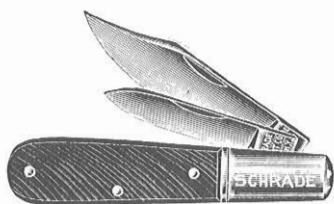


No. 215S

CIX

Barlow Knife, 3 $\frac{3}{8}$  inches long; 2 blades; steel lined; steel bolsters; black inside; glaze finished blades; Bone Stag handle.  
Pen and clip pocket blades . . . No. 215 $\frac{3}{4}$ S

CIX

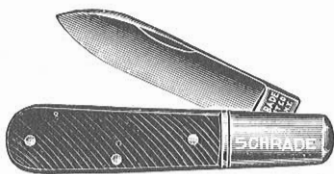


No. 2157 $\frac{3}{4}$

CIX

Barlow Knife, 3 $\frac{3}{8}$  inches long; 2 blades; steel lined; steel bolsters; black inside; glaze finished blades; Stained Bone handle.  
Pen and razor point pocket blades

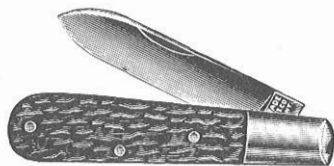
No. 2157 $\frac{1}{4}$



No. 1157

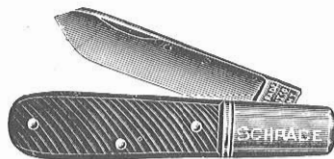
1-1

Barlow Knife, 3 $\frac{3}{8}$  inches long; one blade; steel lined; steel bolsters; black inside; glaze finished blade; Stained Bone handle.



No. L1153

Jack Knife, 3 $\frac{3}{8}$  inches long; 1 blade; steel lined; long steel bolsters; black inside; glaze finished blade; Bone Stag handle.



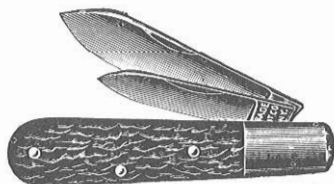
No. 1157 $\frac{1}{4}$

1-1

Barlow Knife, 3 $\frac{3}{8}$  inches long; one blade; steel lined; steel bolsters; black inside; glaze finished blade; Stained Bone handle.

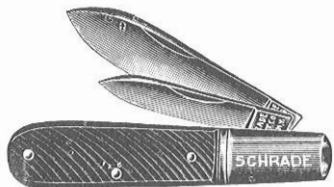
One Sheepfoot blade . . . . . No. 1157 $\frac{1}{2}$   
One Clip blade . . . . . No. 1157 $\frac{3}{4}$

1-1



No. L2153

Jack Knife, 3 $\frac{3}{8}$  inches long; 2 blades; steel lined; long steel bolsters; black inside; glaze finished blades; Bone Stag handle.  
Pen and clip pocket blades . . . No. L2153 $\frac{3}{4}$

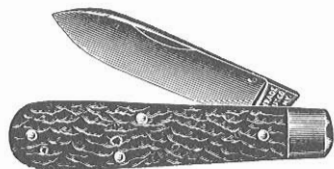


No. 2157

Barlow Knife, 3 $\frac{3}{8}$  inches long; 2 blades; steel lined; steel bolsters; black inside; glaze finished blades; Stained Bone handle.

Pen and spey pocket blades . . . No. 2157 $\frac{1}{4}$   
Pen and sheepfoot pocket blades No. 2157 $\frac{1}{2}$   
Pen and spear pocket blades,

White Bone handle . . . . . No. 2155



No. 1153

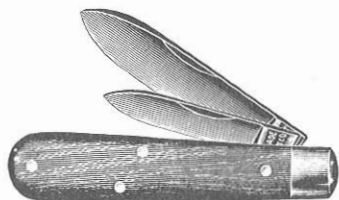
1-1

Jack Knife, 3 $\frac{3}{8}$  inches long; one blade; steel lined; steel bolsters; black inside; glaze finished blade; Bone Stag handle.

Cocobola handle . . . . . No. 1151  
Ebony handle . . . . . 1152  
One clip blade; Bone Stag handle . . . 1153 $\frac{3}{4}$

Packed half dozen in a box

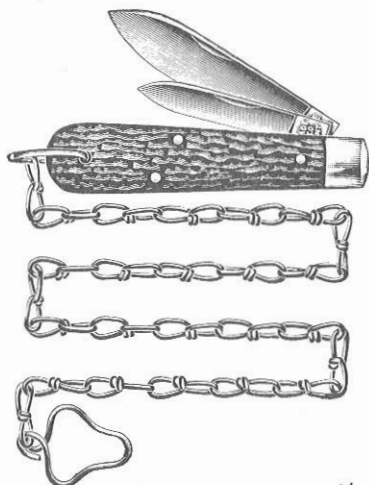
Cuts half size



No. 2151 *CIX*

Jack Knife, 3 $\frac{3}{8}$  inches long; 2 blades; steel lined; steel bolsters; black inside; glaze finished blades; Cocobola handle.

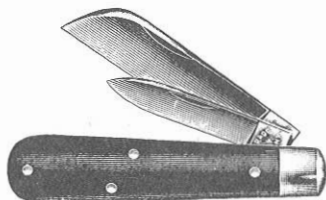
Ebony handle . . . . . *CIX* No. 2152  
 Bone Stag handle . . . . . No. 2153



No. 2153 Chain *CIX*

Jack Knife with chain, 3 $\frac{3}{8}$  inches long; 2 blades; steel lined; steel bolsters; 18 inch chain; black inside; glaze finished blades; Bone Stag handle.

Cocobola handle . . . . . No. 2151 Chain

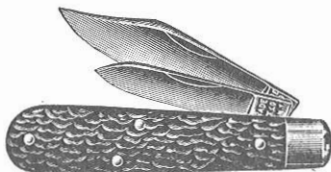


No. 2152 $\frac{1}{2}$

Jack Knife, 3 $\frac{3}{8}$  inches long; 2 blades; steel lined; steel bolsters; black inside; glaze finished blades; Ebony handle.

Bone Stag handle . . . . . *CIX* No. 2153 $\frac{1}{2}$

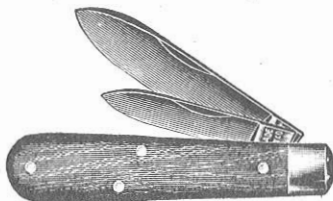
Packed half dozen in a box



No. 2153 $\frac{3}{4}$

Jack Knife, 3 $\frac{3}{8}$  inches long; 2 blades; steel lined; steel bolsters; black inside; glaze finished blades; Bone Stag handle.

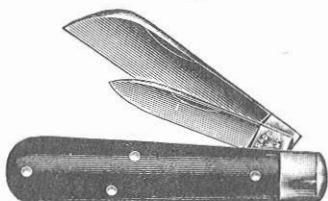
Cocobola handle . . . . . *CIX* No. 2151 $\frac{3}{4}$   
 Ebony handle . . . . . *CIX* No. 2152 $\frac{3}{4}$



No. B2151 *CLC*

Jack Knife, 3 $\frac{3}{8}$  inches long; 2 blades; brass lined; steel bolsters; black inside; glaze finished blades; Cocobola handle.

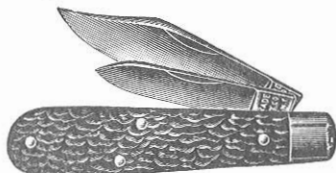
Ebony handle . . . . . *CLC* No. B2152  
 Bone Stag handle . . . . . *CLC* No. B2153



No. B2152 $\frac{1}{2}$

Jack Knife, 3 $\frac{3}{8}$  inches long; 2 blades; brass lined; steel bolsters; black inside; glaze finished blades; Ebony handle.

Bone Stag handle . . . . . *CLC* No. B2153 $\frac{1}{2}$



No. B2153 $\frac{3}{4}$

Jack Knife, 3 $\frac{3}{8}$  inches long; 2 blades; brass lined; steel bolsters; black inside; glaze finished blades; Bone Stag handle.

Cocobola handle . . . . . No. B2151 $\frac{3}{4}$   
 Ebony handle . . . . . *CLC* No. B2152 $\frac{3}{4}$

Cuts half size



No. S2151

Jack Knife,  $3\frac{3}{8}$  inches long; 2 blades; brass lined; steel bolsters; nickel silver shield; black inside; glaze finished blades; Cocobola handle.

Ebony handle . . . . . No. S2152  
Bone Stag handle . . . . . No. S2153

No. S2153 $\frac{1}{4}$ 

Jack Knife,  $3\frac{3}{8}$  inches long; 2 blades; brass lined; steel bolsters; nickel silver shield; black inside; glaze finished blades; Bone Stag handle.

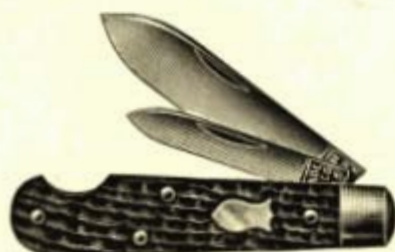
Ebony handle . . . . . No. S2152 $\frac{1}{4}$



No. S2151LB

Jack Knife,  $3\frac{3}{8}$  inches long; 2 blades (leather punch and spear pocket); brass lined; steel bolsters; nickel silver shield; black inside; glaze finished blades; Cocobola handle.

Bone Stag handle . . . . . No. S2153LB



No. S2153EO

Easy Opener Jack Knife,  $3\frac{3}{8}$  inches long; 2 blades; brass lined; steel bolsters; nickel silver shield; black inside; glaze finished blades; Bone Stag handle.

*Packed half dozen in a box*



No. C2153

Jack Knife,  $3\frac{3}{8}$  inches long; 2 blades; brass lined; steel bolsters and caps; nickel silver shield; black inside; glaze finished blades; Bone Stag handle.

Cocobola handle . . . . . No. C2151  
Ebony handle . . . . . No. C2152  
Green Pearl Pyralin handle . . . . . No. C2154G  
Assorted Celluloid handles . . . . . No. C2154AC

**Note**—On the last 2 numbers above, large blade crocus polished on one side.

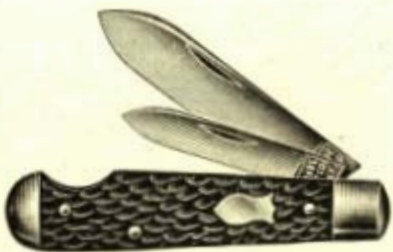
Bone Stag handle with pen and sheep-foot pocket blade . . . . . No. C2153 $\frac{1}{2}$

No. C2151 $\frac{1}{4}$ 

Jack Knife,  $3\frac{3}{8}$  inches long; 2 blades; brass lined; steel bolsters and caps; nickel silver shield; black inside; glaze finished blades; Cocobola handle.

Ebony handle . . . . . No. C2152 $\frac{1}{4}$   
Bone Stag handle . . . . . No. C2153 $\frac{1}{4}$   
Abalone Pearl Pyralin handle . . . . . No. C2154 $\frac{1}{4}$ AP  
Assorted Celluloid handles . . . . . No. C2154 $\frac{1}{4}$ AC

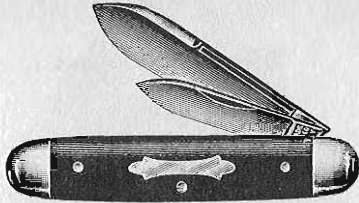
**Note**—On the last 2 numbers above, large blade crocus polished on one side.



No. C2153EO

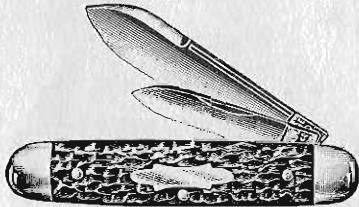
Easy Opener Jack Knife,  $3\frac{3}{8}$  inches long; 2 blades; brass lined; steel bolsters and caps; nickel silver shield; black inside; glaze finished blades; Bone Stag handle.

*Cuts half size*



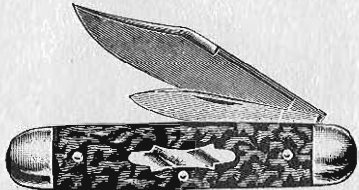
No. 2172

Equal End Jack Knife, 3 $\frac{5}{8}$  inches long; 2 blades; brass lined; nickel silver bolsters and shield; cleaned inside; large blade crocus polished on one side; Ebony handle.  
Cocobola handle . . . . . No. 2171



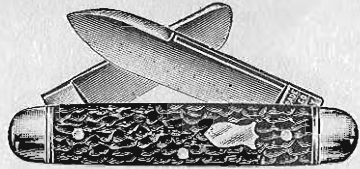
No. 2173

Equal End Jack Knife, 3 $\frac{5}{8}$  inches long; 2 blades; brass lined; nickel silver bolsters and shield; cleaned inside; large blade crocus polished on one side; Bone Stag handle.  
Ivory Celluloid handle . . . . . No. 2174W  
Mother of Pearl handle . . . . . No. 2176  
Genuine Stag handle . . . . . No. 2179GS



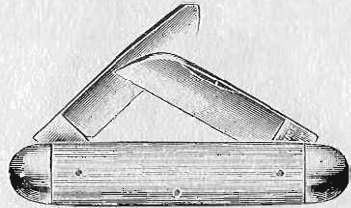
No. 2173 $\frac{3}{4}$

Equal End Jack Knife, 3 $\frac{5}{8}$  inches long; 2 blades; brass lined; nickel silver bolsters and shield; cleaned inside; large blade crocus polished on one side; Bone Stag handle.  
Cocobola handle . . . . . No. 2171 $\frac{3}{4}$   
Ebony handle . . . . . No. 2172 $\frac{3}{4}$



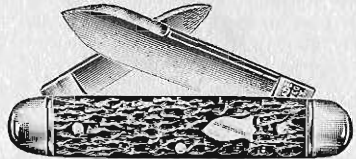
No. 7163

Equal End Jack Knife with one spring, 3 $\frac{5}{8}$  inches long; 2 large blades; brass lined; nickel silver bolsters and shield; cleaned inside; large spear pocket blade crocus polished on one side; Bone Stag handle.



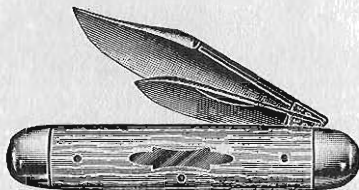
No. 7164 $\frac{1}{2}$ W

FLORISTS' KNIFE for budding, pruning, etc.; 3 $\frac{5}{8}$  inches long; 2 blades (budding and sheep-foot); brass lined; nickel silver bolsters; cleaned inside; sheepfoot blade crocus polished on one side; Ivory Celluloid handle.



No. 7173

Equal End Jack Knife with one spring, 3 $\frac{5}{8}$  inches long; two blades; brass lined; nickel silver bolsters and shield; cleaned inside; large blade crocus polished on one side; Bone Stag handle.  
Cocobola handle . . . . . No. 7171  
Ebony handle . . . . . No. 7172  
Pen and clip pocket blades, Bone Stag handle . . . . . No. 7173 $\frac{3}{4}$

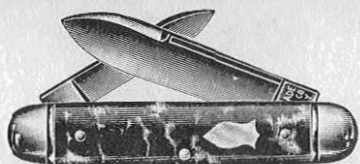


No. 2174 $\frac{3}{4}$ W

Equal End Jack Knife, 3 $\frac{5}{8}$  inches long; 2 blades; brass lined; nickel silver bolsters and shield; cleaned inside; large blade crocus polished on one side; Ivory Celluloid handle.  
Assorted Celluloid handles . . . . . No. 2174 $\frac{3}{4}$ AC

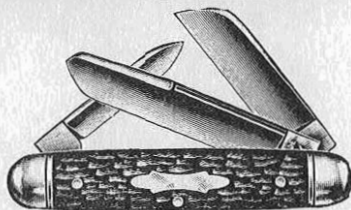
Packed half dozen in a box

Cuts half size

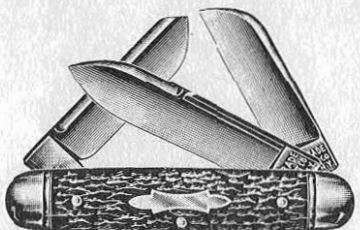


No. 7174S

Equal End Jack Knife with one spring,  $3\frac{5}{8}$  inches long; 2 blades; brass lined; nickel silver bolsters and shield; cleaned inside; large blade crocus polished on one side; Tortoise Shell Celluloid handle.

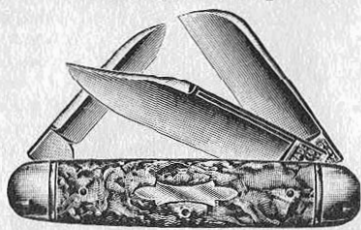
No. 8173 $\frac{1}{4}$ 

Cattle Knife,  $3\frac{5}{8}$  inches long; 3 blades, brass lined; nickel silver bolsters and shield; cleaned inside; large pocket blade crocus polished on one side; Bone Stag handle.

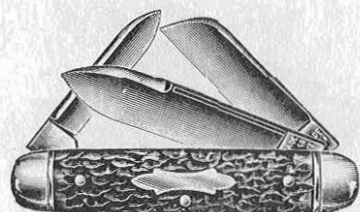


No. 8163

Cattle Knife,  $3\frac{5}{8}$  inches long; 3 large pocket blades; brass lined; nickel silver bolsters and shield; cleaned inside; spear pocket blade crocus polished on one side; Bone Stag handle.

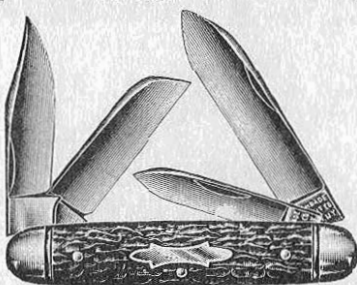
No. 8174 $\frac{3}{4}$ X

Cattle Knife,  $3\frac{5}{8}$  inches long; 3 blades; brass lined; nickel silver bolsters and shield; cleaned inside; large pocket blade crocus polished on one side; Mottled Green Celluloid handle.  
 Bone Stag handle . . . . . No. 8173 $\frac{3}{4}$   
 Green Pearl Pyralin handle . . . . . No. 8174 $\frac{3}{4}$ G  
 Ivory Celluloid handle . . . . . No. 8174 $\frac{3}{4}$ W



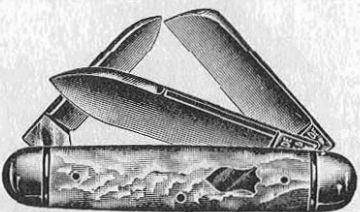
No. 8173

Cattle Knife,  $3\frac{5}{8}$  inches long; 3 blades; brass lined; nickel silver bolsters and shield; cleaned inside; large pocket blade crocus polished on one side; Bone Stag handle.  
 Ebony handle . . . . . No. 8172  
 Golden Pearl Pyralin handle . . . . . No. 8174GP  
 Ivory Celluloid handle . . . . . No. 8174W



No. 9173

Cattle Knife,  $3\frac{5}{8}$  inches long; 4 blades; brass lined; nickel silver bolsters and shield; cleaned inside; large pocket blade crocus polished on one side; Bone Stag handle.

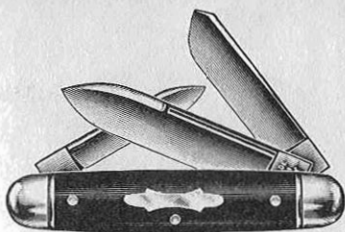


No. 8176

Cattle Knife,  $3\frac{5}{8}$  inches long; 3 blades; brass lined; nickel silver bolsters and shield; cleaned inside; large pocket blade crocus polished on one side; Mother of Pearl handle.  
 Genuine Stag handle . . . . . No. 8179GS

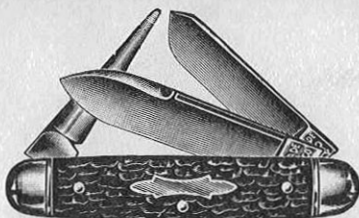
Packed half dozen in a box

Cuts half size



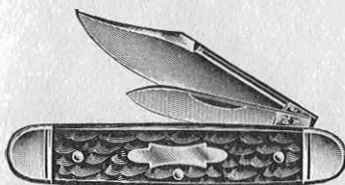
No. 8182

Cattle Knife,  $3\frac{5}{8}$  inches long; 3 blades; brass lined; nickel silver bolsters and shield; cleaned inside; large pocket blade crocus polished on one side; Ebony handle.  
Bone Stag handle . . . . . No. 8183



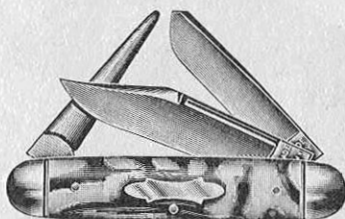
No. S8373

Cattle Knife,  $3\frac{5}{8}$  inches long; 3 blades; brass lined; nickel silver bolsters and shield; cleaned inside; spear pocket blade crocus polished on one side; Bone Stag handle.  
Green Pearl Pyralin handle . No. S8374G  
Assorted Celluloid handles . No. S8374AC



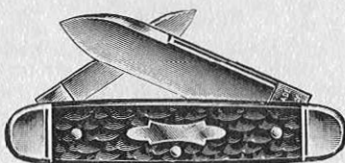
No. 2193 $\frac{3}{4}$

Equal End Jack Knife,  $3\frac{5}{8}$  inches long; 2 blades; brass lined; nickel silver flat bevel bolsters and shield; cleaned inside; large blade crocus polished on one side; Bone Stag handle.



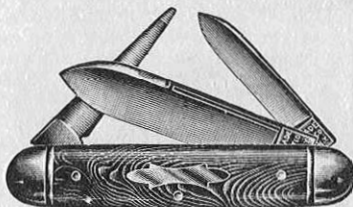
No. S8374 $\frac{3}{4}$ K

Cattle Knife,  $3\frac{5}{8}$  inches long; 3 blades; brass lined; nickel silver bolsters and shield; cleaned inside; clip pocket blade crocus polished on one side; Brown Lined Cream Pyralin handle.  
Bone Stag handle . . . . . No. S8373 $\frac{3}{4}$   
Assorted Celluloid handles . No. S8374 $\frac{3}{4}$ AC



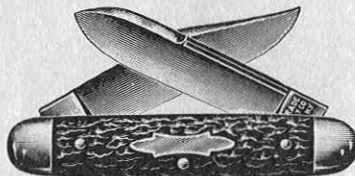
No. 7193

Equal End Jack Knife, with one spring,  $3\frac{5}{8}$  inches long; 2 blades; brass lined; nickel silver flat bevel bolsters and shield; cleaned inside; large blade crocus polished on one side; Bone Stag handle.



No. 8384G

Cattle Knife,  $3\frac{5}{8}$  inches long; 3 blades; brass lined; nickel silver bolsters and shield; cleaned inside; spear pocket blade crocus polished on one side; Green Pearl Pyralin handle.  
Golden Pearl Pyralin handle . No. 8384GP  
Assorted Celluloid handles . No. 8384AC  
Bone Stag handle . . . . . No. 8383  
Clip pocket blade substituted for spear pocket; Bone Stag handle . No. 8383 $\frac{3}{4}$

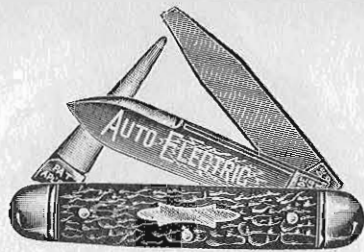


No. 7233

Equal End Jack Knife,  $3\frac{5}{8}$  inches long; two large pocket blades; brass lined; nickel silver bolsters and shield; cleaned inside; spear pocket blade crocus polished on one side; Bone Stag handle.

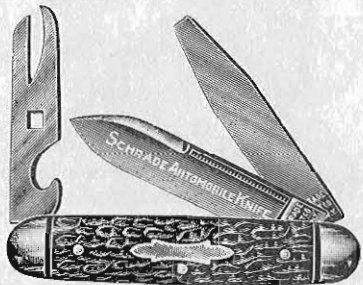
*Packed half dozen in a box*

*Cuts half size*



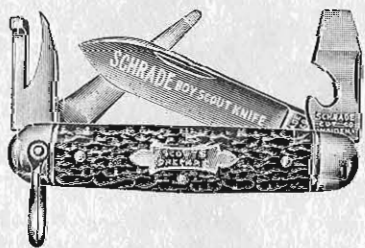
No. 8443

Automobile and Electrician's Knife, Equal End pattern, 3 3/8 inches long; 3 blades (leather punch, screw driver-wire scraper-file and spear pocket); brass lined; nickel silver bolsters and shield; cleaned inside; spear pocket blade crocus polished on one side; Bone Stag handle.



No. 8463

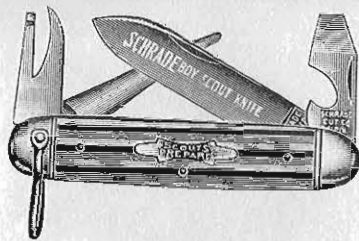
Automobile and Camper's Knife, Equal End pattern, 3 3/8 inches long; 3 blades (screw driver-wire scraper-file, can opener-cap lifter and spear pocket); brass lined; nickel silver bolsters and shield; cleaned inside; spear pocket blade crocus polished on one side; Bone Stag handle.



No. 9463

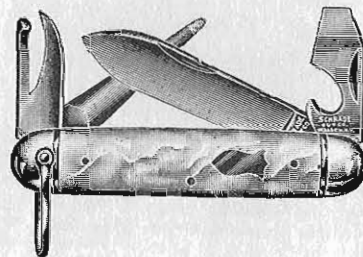
Boy Scout Knife, 3 5/8 inches long; 4 blades (leather punch, can opener, screw driver-cap lifter and spear pocket); brass lined; nickel silver bolsters, shield and shackle; cleaned inside; spear pocket blade crocus polished on one side; Bone Stag handle.

Packed half dozen in a box



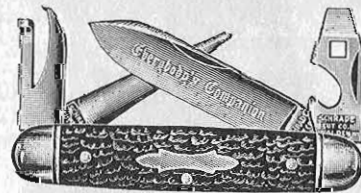
No. 9464US

Boy Scout Knife, 3 5/8 inches long; 4 blades (leather punch, can opener, screw driver-cap lifter and spear pocket); brass lined; nickel silver bolsters, shield and shackle; cleaned inside; spear pocket blade crocus polished on one side; Red-White-Blue Celluloid handle.



No. M9466

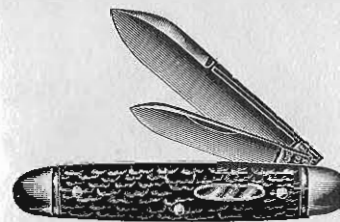
Boy Scout Knife, 3 5/8 inches long; 4 blades (leather punch, can opener, screw driver-cap lifter and spear pocket); brass lined; nickel silver bolsters, shield and shackle; cleaned inside; fancy milled edges on back of linings and centers; spear pocket blade full crocus polished; Mother of Pearl handle.



No. S9463

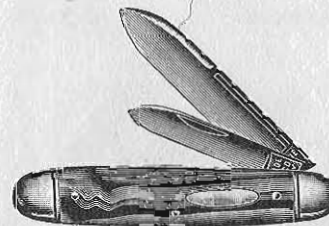
Boy Scout Knife without shackle, (or) Everybodys' Companion, 3 5/8 inches long; 4 blades (leather punch, can opener, screw driver-cap lifter and spear pocket); brass lined; nickel silver bolsters and shield; cleaned inside; spear pocket blade crocus polished on one side; Bone Stag handle.

Cuts half size



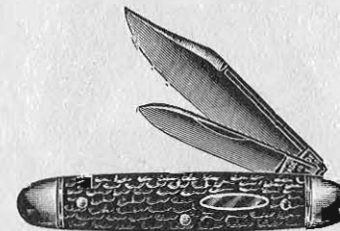
No. 2563

Equal End Jack Knife, 3 3/8 inches long; 2 blades; brass lined; nickel silver bolsters and shield; cleaned inside; large blade crocus polished on one side; Bone Stag handle.



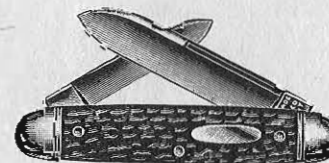
No. 2564K

Equal End Jack Knife, 3 3/8 inches long; 2 blades; brass lined; nickel silver bolsters and shield; cleaned inside; large blade crocus polished on one side; Brown Lined Cream Pyralin handle. Smoked Pearl Celluloid handle No. 2564P Assorted Celluloid handles No. 2564AC Mother of Pearl handle . . . No. 2566



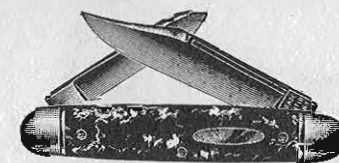
No. 2563 1/4

Equal End Jack Knife, 3 3/8 inches long; 2 blades; brass lined; nickel silver bolsters and shield; cleaned inside; large blade crocus polished on one side; Bone Stag handle.



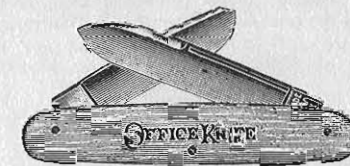
No. 7563

Packed half dozen in a box



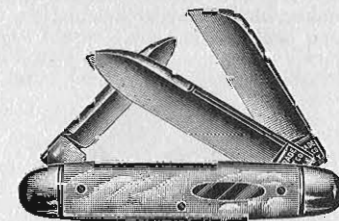
No. 7564 3/8 S

Equal End Jack Knife with one spring, 3 3/8 inches long; 2 blades; brass lined; nickel silver bolsters and shield; cleaned inside; large blade crocus polished on one side; Tortoise Shell Celluloid handle. Bone Stag handle . . . . . No. 7563 1/4



No. O7564W

Office Knife, Equal End pattern, 3 3/8 inches long; 2 blades; brass lined; cleaned inside; spear pocket blade crocus polished on one side; Ivory Celluloid handle (stamped).

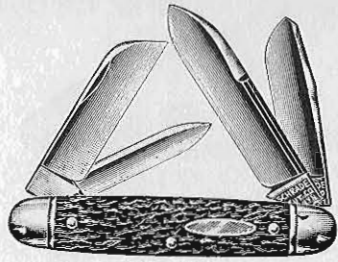


No. 8566

Cattle Knife, 3 3/8 inches long; 3 blades; brass lined; nickel silver bolsters and shield; cleaned inside; blades full crocus polished; Mother of Pearl handle. Large blade crocus polished on one side; Bone Stag handle . . . No. 8563 Assorted Pyralin handles . . . No. 8564AC Clip pocket blade substituted for spear pocket blade, Bone Stag handle . . . No. 8563 1/4 Assorted Pyralin handles . . . No. 8564 1/4 AC

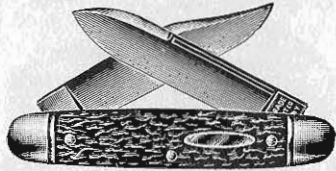
Equal End Jack Knife with one spring, 3 3/8 inches long; 2 blades; brass lined; nickel silver bolsters and shield; cleaned inside; large blade crocus polished on one side; Bone Stag handle.

Cuts half size



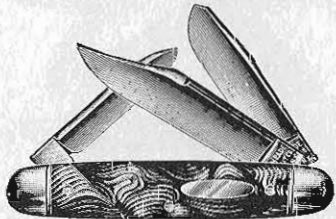
No. 9563

Cattle Knife, 3 3/8 inches long; 4 blades; brass lined; nickel silver bolsters and shield; cleaned inside; large pocket blade crocus polished on one side; Bone Stag handle.



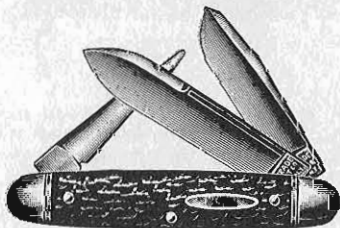
No. 7573

Equal End Jack Knife, 3 3/8 inches long; two large pocket blades; brass lined; nickel silver bolsters and shield; cleaned inside; spear pocket blade crocus polished on one side; Bone Stag handle.



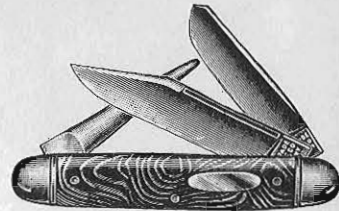
No. 8574 1/2 AP

Cattle Knife, 3 3/8 inches long; 3 blades; brass lined; nickel silver bolsters and shield; cleaned inside; large pocket blade crocus polished on one side; Abalone Pearl Pyralin handle. Bone Stag handle . . . . . No. 8573 3/4



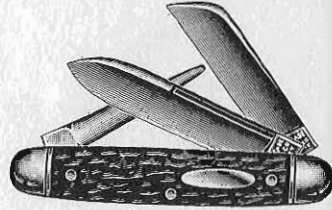
No. 8583

Packed half dozen in a box



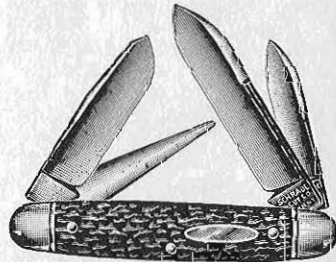
No. 8584 3/4 GP

Cattle Knife, 3 3/8 inches long; 3 blades; brass lined; nickel silver bolsters and shield; cleaned inside; large pocket blade crocus polished on one side; Golden Pearl Pyralin handle. Bone Stag handle . . . . . No. 8583 3/4



No. S8583

Cattle Knife, 3 3/8 inches long; 3 blades; brass lined; nickel silver bolsters and shield; cleaned inside; large pocket blade crocus polished on one side; Bone Stag handle.

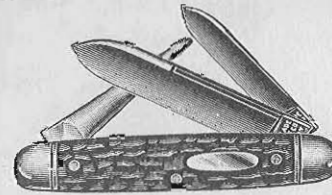


No. 9583

Cattle Knife, 3 3/8 inches long; 4 blades; brass lined; nickel silver bolsters and shield; cleaned inside; large pocket blade crocus polished on one side; Bone Stag handle.

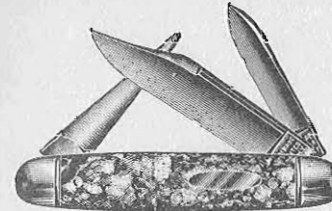
Cattle Knife, 3 3/8 inches long; 3 blades; brass lined; nickel silver bolsters and shield; cleaned inside; large pocket blade crocus polished on one side; Bone Stag handle. Horn Pyralin handle . . . . . No. 8584 Horn Assorted Celluloid handles . . . . . No. 8584 AC

Cuts half size



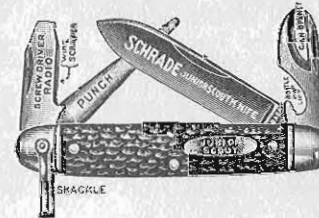
No. 8593

Cattle Knife, 3 3/8 inches long; 3 blades; brass lined; nickel silver bolsters and shield; cleaned inside; large pocket blade crocus polished on one side; Bone Stag handle. Green Pearl Pyralin handle . . . . . No. 8594 G



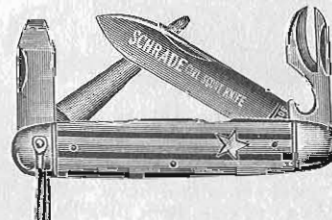
No. 8594 1/2 X

Cattle Knife, 3 3/8 inches long; 3 blades; brass lined; nickel silver bolsters and shield; cleaned inside; large pocket blade crocus polished on one side; Mottled Green Celluloid handle.



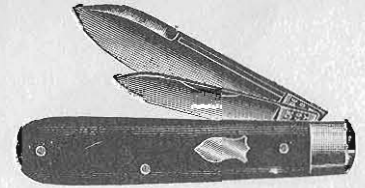
No. 9593

Junior Boy Scout Knife, 3 3/8 inches long; 4 blades (leather punch, can opener-cap lifter, screw driver-radio wire scraper and spear pocket); brass lined; nickel silver bolsters, shield and shackle; cleaned inside; spear pocket blade crocus polished on one side; Bone Stag handle. Red-White-Blue Celluloid handle No. 9594 US



No. G9594 US

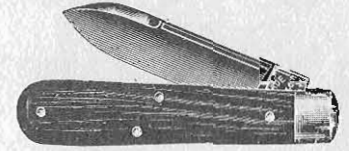
Packed half dozen in a box



No. 2122

Jack Knife, 3 1/2 inches long; 2 blades; steel lined; steel bolsters; nickel silver shield; cleaned inside; glaze finished blades; Ebony handle.

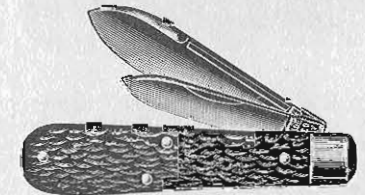
Cocobola handle . . . . . No. 2121  
Bone Stag handle . . . . . No. 2123  
Pen and clip pocket blades, Cocobola handle . . . . . No. 2121 3/4  
Pen and clip pocket blades; Bone Stag handle . . . . . No. 2123 3/4



No. 1131

Jack Knife, 3 1/2 inches long; 1 blade; steel lined; steel bolsters; black inside; glaze finished blade; Cocobola handle.

Bone Stag handle . . . . . No. 1133  
One large Clip blade; Cocobola handle . . . . . No. 1131 3/4



No. 2133

Jack Knife, 3 1/2 inches long; 2 blades; steel lined; steel bolsters; black inside; glaze finished blades; Bone Stag handle.

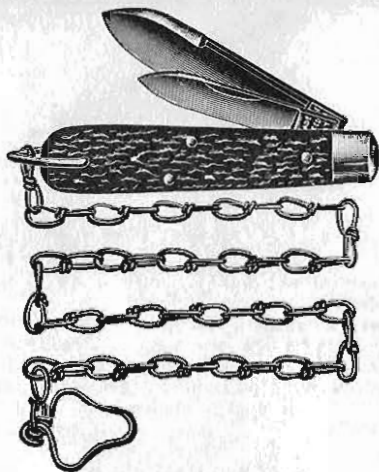
Cocobola handle . . . . . No. 2131  
Ebony handle . . . . . No. 2132

Girl Scout Knife, 3 3/8 inches long; 4 blades (leather punch, can opener-cap lifter, screw driver-radio wire scraper and spear pocket); brass lined; nickel silver bolsters, shield and shackle; cleaned inside; spear pocket blade crocus polished on one side; Red-White-Blue Celluloid handle.

Bone Stag handle . . . . . No. G9593  
Marine Pearl Pyralin handle . . . . . No. G9594 M  
Spear pocket blade full crocus polished Mother of Pearl handle . . . . . No. G9596

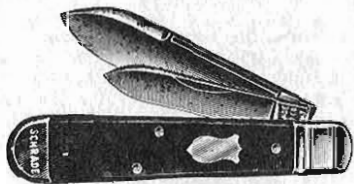
Cuts half size





No. 2133 Chain

Jack Knife with chain, 3½ inches long; 2 blades; steel lined; steel bolsters; 18 inch chain; black inside; gaze finished blades; Bone Stag handle.



No. 2202

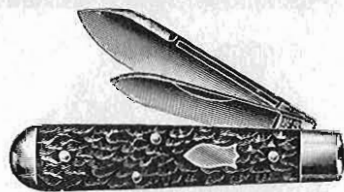
Jack Knife, 3½ inches long; 2 blades; brass lined; nickel silver Washington bolsters, flat caps and shield; cleaned inside; large blade crocus polished on one side; Ebony handle.  
Bone Stag handle . . . . . No. 2203



No. 2203¾

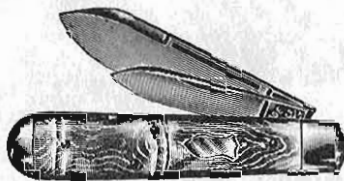
Jack Knife, 3½ inches long; 2 blades; brass lined; nickel silver Washington bolsters, flat caps and shield; cleaned inside; large blade crocus polished on one side; Bone Stag handle.

Packed half dozen in a box



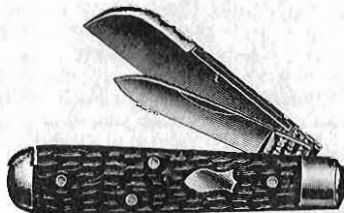
No. 2213

Jack Knife, 3½ inches long; 2 blades; brass lined; nickel silver bolsters, caps and shield; cleaned inside; large blade crocus polished on one side; Bone Stag handle.  
Cocobola handle . . . . . No. 2211  
Ebony handle . . . . . No. 2212



No. 2214P

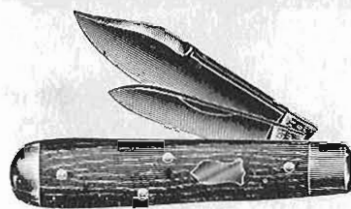
Jack Knife, 3½ inches long; 2 blades; brass lined; nickel silver bolsters, caps and shield; cleaned inside; large blade crocus polished on one side; Smoked Pearl Celluloid handle.  
Tortoise Shell Celluloid handle . . . . . No. 2214S  
Ivory Celluloid handle . . . . . No. 2214W  
Mottled Green Celluloid handle . . . . . No. 2214X  
Assorted Celluloid handles . . . . . No. 2214AC  
Genuine Stag handle . . . . . No. 2219GS



No. 2213½

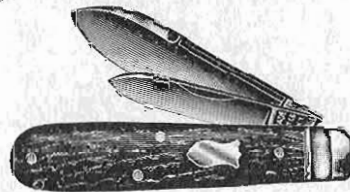
Jack Knife, 3½ inches long; 2 blades; brass lined; nickel silver bolsters, caps and shield; cleaned inside; large blade crocus polished on one side; Bone Stag handle.  
Genuine Stag handle . . . . . No. 2219½GS

Cuts half size



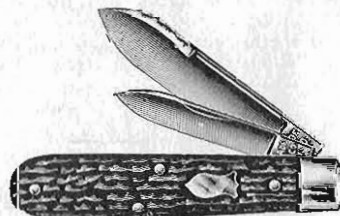
No. 2211¾

Jack Knife, 3½ inches long; 2 blades; brass lined; nickel silver bolsters, caps and shield; cleaned inside; large blade crocus polished on one side; Cocobola handle.  
Ebony handle . . . . . No. 2212¾  
Bone Stag handle . . . . . No. 2213¾  
Ivory Celluloid handle . . . . . No. 2214¾W  
Assorted Celluloid handles . . . . . No. 2214¾AC



No. 2271

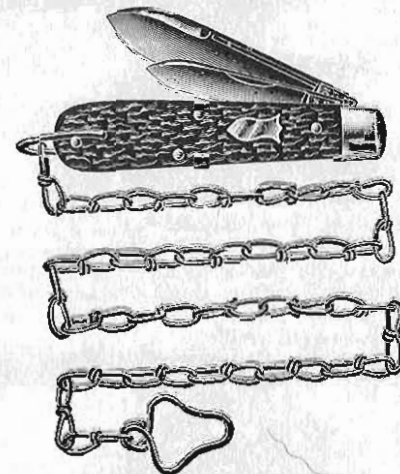
Jack Knife, 3½ inches long; 2 blades; brass lined; steel rat bolsters; nickel silver shield; cleaned inside; large blade crocus polished on one side; Cocobola handle.  
Bone Stag handle . . . . . No. 2273



No. 2283

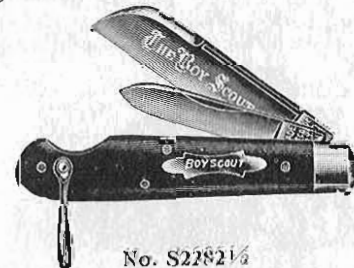
Jack Knife, 3½ inches long; 2 blades; brass lined; nickel silver bolsters and shield; cleaned inside; large blade crocus polished on one side; Bone Stag handle.  
Cocobola handle . . . . . No. 2241  
Pen and clip pocket blades; Bone Stag handle . . . . . No. 2283¾

Packed half dozen in a box



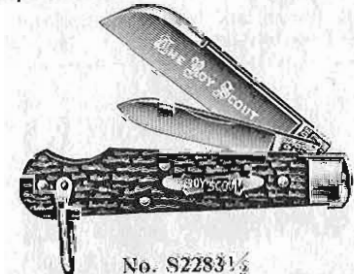
No. 2283 Chain

Jack Knife with chain, 3½ inches long; 2 blades; brass lined; nickel silver bolsters and shield; 20 inch chain; cleaned inside; large blade crocus polished on one side; Bone Stag handle.



No. S2282¼

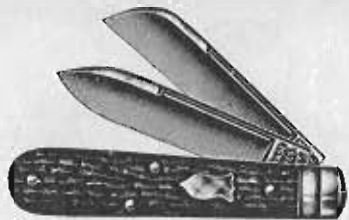
Easy Opener Boy Scout Knife, 3½ inches long; 2 blades; brass lined; nickel silver bolsters, shield and shackle; cleaned inside; large blade crocus polished on one side; Ebony handle.



No. S2283½

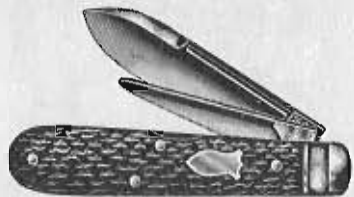
Easy Opener Boy Scout Knife, 3½ inches long; 2 blades; brass lined; nickel silver bolsters, shield and shackle; cleaned inside; large blade crocus polished on one side; Bone Stag handle.

Cuts half size



No. 2293

CARPENTER'S KNIFE, 3½ inches long; 2 large pocket blades; brass lined; steel rat bolsters; nickel silver shield; cleaned inside; large blade crocus polished on one side; Bone Stag handle.



No. 2363

Jack Knife, 3½ inches long; 2 blades; brass lined; steel rat bolsters; nickel silver shield; cleaned inside; large blade crocus polished on one side; Bone Stag handle.



No. 2392

Jack Knife, 3½ inches long; 2 blades; brass lined; steel bolsters; nickel silver shield; black inside; glaze finished blades; Ebony handle.

Bone Stag handle . . . . . No. 2393  
Leather punch and clip pocket blade;  
Bone Stag handle . . . . . No. 2393½



No. S2393

Packed half dozen in a box

Cuts half size



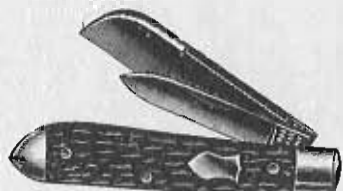
No. 2222

Serpentine Jack Knife, 3½ inches long; 2 blades; brass lined; nickel silver bolsters, caps and shield; cleaned inside; large blade crocus polished on one side; Ebony handle. Cocobola handle . . . . . No. 2221  
Bone Stag handle . . . . . No. 2223  
Golden Pearl Pyralin handle . . . . . No. 2224GP  
Assorted Celluloid handles . . . . . No. 2224AC



No. 2226

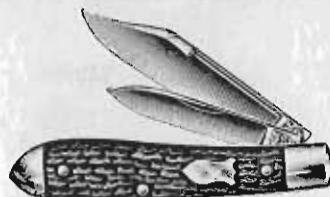
Serpentine Jack Knife, 3½ inches long; 2 blades; brass lined; nickel silver bolsters, caps and shield; cleaned inside; large blade crocus polished on one side; Mother of Pearl handle.



No. 2223½

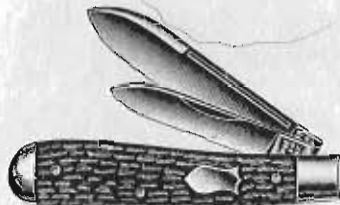
Serpentine Jack Knife, 3½ inches long; 2 blades; brass lined; nickel silver bolsters, caps and shield; cleaned inside; large blade crocus polished on one side; Bone Stag handle.

Campers' Knife, 3½ inches long; 2 blades (can opener-cap lifter and large spear pocket); brass lined; steel bolsters; nickel silver shield; cleaned inside; spear pocket blade crocus polished on one side; Bone Stag handle.



No. 2223¾

Serpentine Jack Knife, 3½ inches long; 2 blades; brass lined; nickel silver bolsters, caps and shield; cleaned inside; large blade crocus polished on one side; Bone Stag handle.



No. 2333

Serpentine Jack Knife, 3¾ inches long; 2 blades; brass lined; nickel silver bolsters, caps and shield; cleaned inside; large blade crocus polished on one side; Bone Stag handle. Cocobola handle . . . . . No. 2331  
Ebony handle . . . . . No. 2332  
Brown Lined Cream Pyralin handle . . . . . No. 2334K  
Ivory Celluloid handle . . . . . No. 2334W  
Assorted Celluloid handles . . . . . No. 2334AC



No. 2333¾

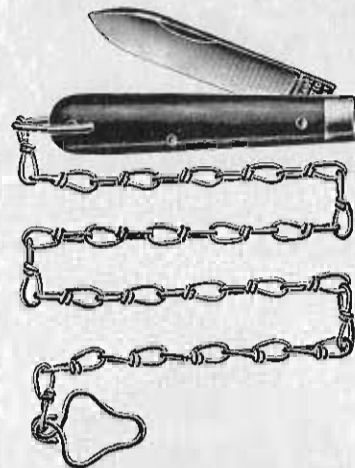
Serpentine Jack Knife, 3¾ inches long; 2 blades; brass lined; nickel silver bolsters, caps and shield; cleaned inside; large blade crocus polished on one side; Bone Stag handle. Pen and sheepfoot pocket blades No. 2333½

Packed half dozen in a box



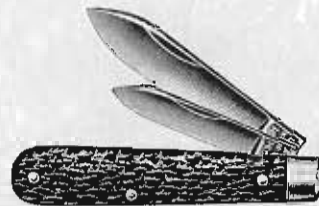
No. 1251 L-L1

Jack Knife, 3¼ inches long; 1 blade; steel lined; steel bolsters; black inside; glaze finished blade; Cocobola handle. Bone Stag handle . . . . . L-L1 No. 1253



No. 1251 Chain L-LX

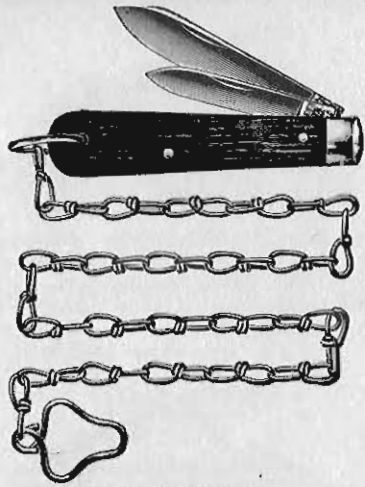
Jack Knife with chain, 3¼ inches long; 1 blade; steel lined; steel bolsters; 18 inch chain; black inside; glaze finished blade; Cocobola handle. Bone Stag handle . . . . . L-L1 No. 1253 Chain



No. 2253

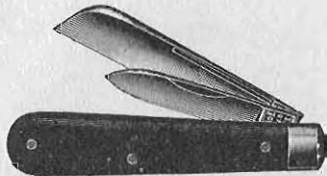
Jack Knife, 3¼ inches long; 2 blades; steel lined; steel bolsters; black inside; glaze finished blades; Bone Stag handle. Cocobola handle . . . . . No. 2251  
Ebony handle . . . . . No. 2252

Cuts half size



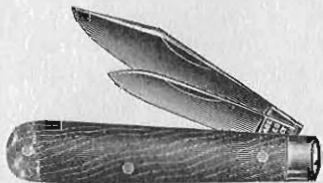
No. 2251 Chain

Jack Knife with chain, 3 1/4 inches long; 2 blades; steel inside; glaze finished blades; Cocobola handle. . . . . No. 2253Chain



No. 2252 1/2

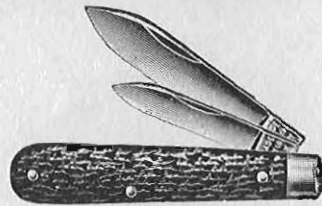
Jack Knife, 3 1/4 inches long; 2 blades; steel lined; steel bolsters; black inside; glaze finished blades; Ebony handle. . . . . No. 2253 1/2



No. 2251 3/4

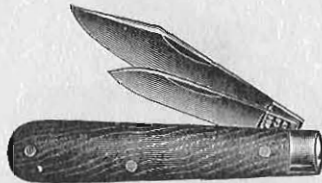
Jack Knife, 3 1/4 inches long; 2 blades; steel lined; steel bolsters; black inside; glaze finished blades; Cocobola handle. . . . . No. 2253 3/4

Packed half dozen in a box



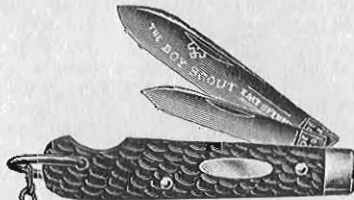
No. B2253

Jack Knife, 3 1/4 inches long; 2 blades; brass lined; steel bolsters; black inside; glaze finished blades; Bone Stag handle. . . . . No. B2251  
Cocobola handle . . . . . No. B2253 1/2  
Pen and sheepfoot pocket blades; Bone Stag handle . . . . . No. B2253 1/2



No. B2251 3/4

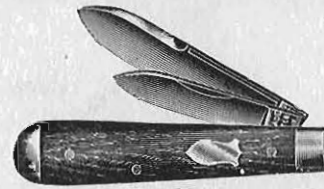
Jack Knife, 3 1/4 inches long; 2 blades; brass lined; steel bolsters; black inside; glaze finished blades; Cocobola handle.



No. S2253EO

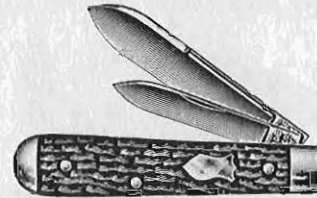
Easy Opener Boy Scout Knife with chain, 3 1/4 inches long; 2 blades; brass lined; steel bolsters; 18 inch chain; nickel silver shield; cleaned inside; large blade crocus polished on one side; Bone Stag handle.

Cuts half size



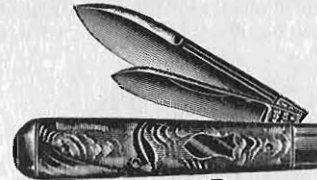
No. 2261

Jack Knife, 3 1/4 inches long; 2 blades; brass lined; nickel silver bolsters, caps and shield; cleaned inside; large blade crocus polished on one side; Cocobola handle. . . . . No. 2262  
Ebony handle . . . . . No. 2262



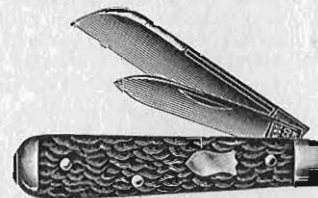
No. 2263

Jack Knife, 3 1/4 inches long; 2 blades; brass lined; nickel silver bolsters, caps and shield; cleaned inside; large blade crocus polished on one side; Bone Stag handle.



No. 2264P

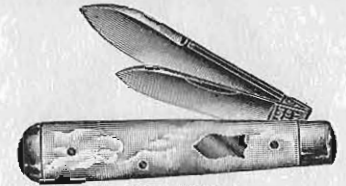
Jack Knife, 3 1/4 inches long; 2 blades; brass lined; nickel silver bolsters, caps and shield; cleaned inside; large blade crocus polished on one side; Smoked Pearl Celluloid handle. . . . . No. 2264G  
Green Pearl Pyralin handle . . . . . No. 2264K  
Brown Lined Cream Pyralin handle . . . . . No. 2264S  
Tortoise Shell Celluloid handle . . . . . No. 2264W  
Ivory Celluloid handle . . . . . No. 2264W  
Assorted Celluloid handles . . . . . No. 2264AC



No. 2263 1/2

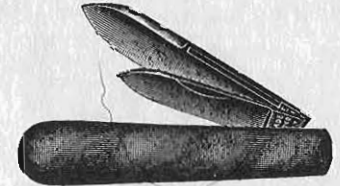
Jack Knife, 3 1/4 inches long; 2 blades; brass lined; nickel silver bolsters, caps and shield; cleaned inside; large blade crocus polished on one side; Bone Stag handle. . . . . No. 2263 1/2  
Pen and clip pocket blades Bone Stag handle . . . . . No. 2263 1/2

Packed half dozen in a box



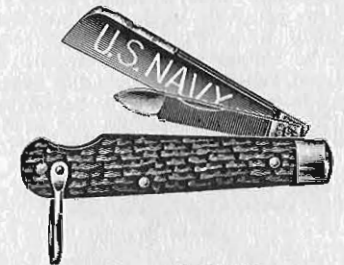
No. 2266

Jack Knife, 3 1/4 inches long; 2 blades; brass lined; nickel silver bolsters, caps and shield; cleaned inside; large blade crocus polished on one side; Mother of Pearl handle.



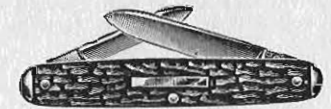
No. 2269BR

Jack Knife, 3 1/4 inches long; 2 blades; cleaned inside; large blade crocus polished on one side; Solid Brass composition handle.



No. 2353 Navy

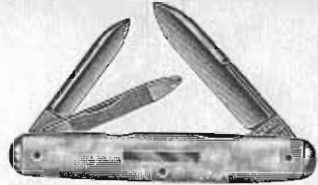
Navy Knife, Easy Opener, 3 1/4 inches long; 2 blades (regulation navy pocket blade and nail pen); brass lined; nickel silver bolsters and shackle; cleaned inside; pocket blade crocus polished on one side; Bone Stag handle.



No. 7143T

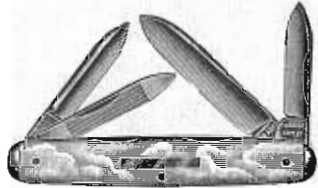
Senator pattern, sunk joint, 3 1/8 inches long; 2 blades; brass lined; nickel silver tips and shield; cleaned inside; blades full crocus polished; Bone Stag handle. . . . . No. 7146T  
Nickel Silver lined, without shield, Mother of Pearl handle . . . . . No. 7140GST  
Nickel Silver lined, with shield; Genuine Stag handle . . . . . No. 7143B  
Nickel Silver Bolsters, substituted for tips, Bone Stag handle . . . . . No. 7143B

Cuts half size



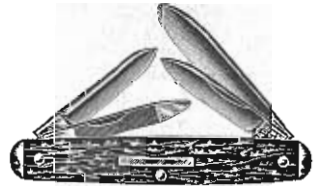
No. 8146T

Senator pattern, sunk joint,  $3\frac{1}{8}$  inches long; 3 blades; nickel silver lined; nickel silver tips and shield; cleaned inside; blades full crocus polished; Mother of Pearl handle. Brass lined, Bone Stag handle No. 8143T Nickel Silver lined, Genuine Stag handle . . . . . No. 8149GST



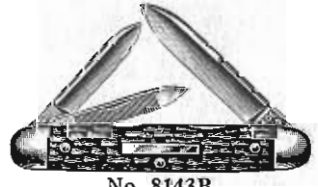
No. 9146T

Senator pattern, sunk joint,  $3\frac{1}{8}$  inches long; 4 blades; nickel silver lined; nickel silver tips and shield; cleaned inside; blades full crocus polished; Mother of Pearl handle. Brass lined, Bone Stag handle No. 9143T Brass lined, Goldaleur Cell. handle 9144GLT Brass lined, Ivory Celluloid handle 9144WT Nickel Silver lined, without nickel silver tips, Mother of Pearl handle No. 9146 Note—9146T and 9146 have full milled backs.



No. 9149GST

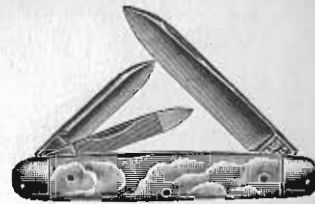
Senator pattern, sunk joint,  $3\frac{1}{8}$  inches long; 4 blades; nickel silver lined; full milled backs; nickel silver tips and shield; cleaned inside; blades full crocus polished; Genuine Stag handle.



No. 8143B

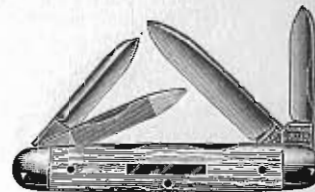
Senator pattern, sunk joint,  $3\frac{1}{8}$  inches long; 3 blades; brass lined; nickel silver bolsters and shield; cleaned inside; blades full crocus polished; Bone Stag handle. Genuine Stag handle . . . . . No. 8149GSB

Packed half dozen in a box



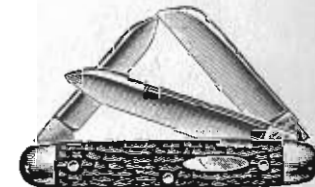
No. SL8146B

Senator pattern with long spear pocket blade, sunk joint,  $3\frac{1}{8}$  inches long; 3 blades; nickel silver lined; nickel silver bolsters; cleaned inside; blades full crocus polished; Mother of Pearl handle.



No. 9144WB

Senator pattern, sunk joint,  $3\frac{1}{8}$  inches long; 4 blades; brass lined; nickel silver bolsters and shield; cleaned inside; blades full crocus polished; Ivory Celluloid handle. Bone Stag handle . . . . . No. 9143B



No. 8103

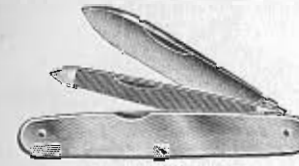
Senator pattern,  $3\frac{1}{8}$  inches long; 3 blades; brass lined; nickel silver bolsters and shield; cleaned inside; spear pocket blade crocus polished on one side; Bone Stag handle. Smoked Pearl Celluloid handle . No. 8104P Leather Punch, spey and spear pocket blades; Bone Stag handle . No. 8103 $\frac{1}{4}$ LB Leather Punch, spey and spear pocket blades; Assorted Celluloid handles No. 8104 $\frac{1}{4}$ LBAC



No. 1309GSIL

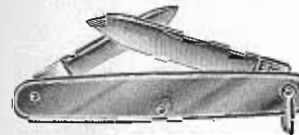
Senator Knife, Slim pattern,  $3\frac{1}{8}$  inches long; 1 blade; cleaned inside; blade crocus polished on one side; Thin Oval Nickel Silver handles.

Cuts half size



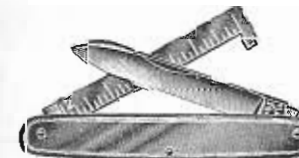
No. M2309GSIL

Senator Knife with long manicure file,  $3\frac{1}{8}$  inches long; 2 blades; cleaned inside; cutting blade crocus polished on one side; Thin Oval Nickel Silver handle.



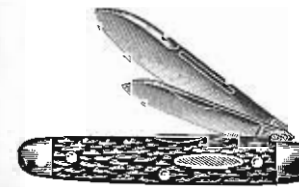
No. 7309GSIL Shackle

Senator pattern with nickel silver shackle,  $3\frac{1}{8}$  inches long; 2 blades; cleaned inside; large blade crocus polished on one side; Thin Oval Nickel Silver handles. Without shackle . . . . . No. 7309GSIL With Shackle, blades full crocus polished, Sterling Silver handles No. 7309SSShackle



No. 57309GSIL

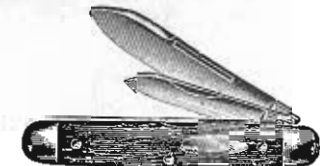
LUMBER RULE, Senator pattern,  $3\frac{1}{8}$  inches long; 2 blades (two inch rule and spear pocket); cleaned inside; spear pocket blade crocus polished on one side; Thin Oval Nickel Silver handles.



No. 2423

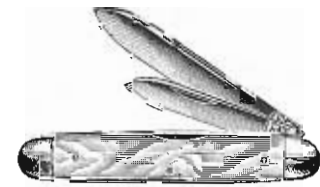
Equal End Jack Knife, Slim pattern,  $3\frac{1}{8}$  inches long; 2 blades; brass lined; nickel silver bolsters and shield; cleaned inside; large blade crocus polished on one side; Bone Stag handle.

Packed half dozen in a box



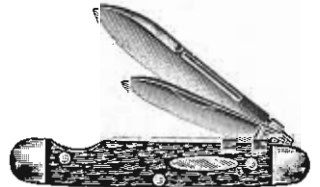
No. 2424C

Equal End Jack Knife, Slim pattern,  $3\frac{1}{8}$  inches long; 2 blades; brass lined; nickel silver bolsters and shield; cleaned inside; large blade crocus polished on one side; Cocobola Celluloid handle. Black Celluloid handle . . . . . No. 2424B Black and White Pyralin handle No. 2424H Red-White-Amber Striped Pyralin handle . . . . . No. 2424J Brown Lined Cream Pyralin handle No. 2424K Smoked Pearl Celluloid handle No. 2424P Tortoise Shell Celluloid handle No. 2424S Red-White-Blue Celluloid handle No. 2424US Ivory Celluloid handle . . . . . No. 2424W Assorted Celluloid handles . . . . . No. 2424AC



No. 2426

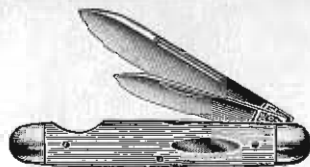
Equal End Jack Knife, Slim pattern,  $3\frac{1}{8}$  inches long; 2 blades; brass lined; nickel silver bolsters; cleaned inside; large blade crocus polished on one side; Mother of Pearl handle.



No. 2423EO

Easy Opener Equal End Jack Knife, Slim pattern,  $3\frac{1}{8}$  inches long; 2 blades; brass lined; nickel silver bolsters and shield; cleaned inside; large blade crocus polished on one side; Bone Stag handle.

Cuts half size



No. 2424WEO

Easy Opener Equal End Jack Knife, Slim pattern, 3 1/8 inches long; 2 blades; brass lined; nickel silver bolsters and shield; cleaned inside; large blade crocus polished on one side; Ivory Celluloid handle.

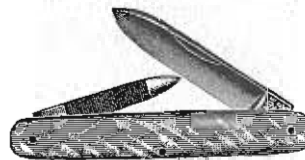
Cocobola Celluloid handle . No. 2424CEO  
Smoked Pearl Celluloid handle No. 2424PEO  
Tortoise Shell Celluloid handle No. 2424SEO  
Red-White-Blue Celluloid handle 2424USEO  
Assorted Celluloid handles . No. 2424ACEO



No. 2424 3/4 K

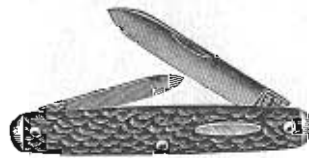
Equal End Jack Knife, Slim pattern, 3 1/8 inches long; 2 blades; brass lined; nickel silver bolsters and shield; cleaned inside; large blade crocus polished on one side; Brown Lined Cream Pyralin handle.

Bone Stag handle . . . . . No. 2423 3/4  
Red-White-Amber Striped Pyralin handle . . . . . No. 2424 3/4 J  
Tortoise Shell Celluloid handle No. 2424 3/4 S  
Assorted Celluloid handles . . No. 2424 3/4 AC



No. F7426

Senator pattern, 3 1/8 inches long; 2 blades; brass lined; cleaned inside; spear pocket blade crocus polished on one side; Mother of Pearl handle.



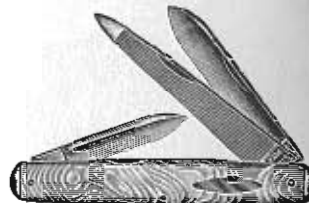
No. F7423T

Senator pattern, 3 1/8 inches long; 2 blades; brass lined; nickel silver tips and shield; cleaned inside; pocket blade crocus polished on one side; Bone Stag handle. Mother of Pearl handle (without shield) . . . . . No. F7426T



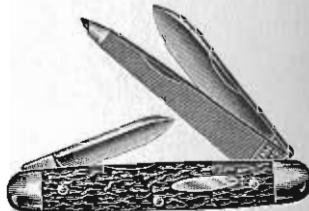
No. M8426

Senator pattern, 3 1/8 inches long; 3 blades; (long manicure file, pen and spear pocket); brass lined; nickel silver shield; cleaned inside; spear pocket blade crocus polished on one side; Mother of Pearl handle.



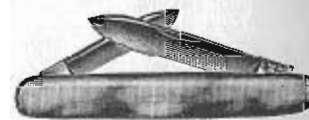
No. M8424PT

Senator pattern, 3 1/8 inches long; 3 blades (long manicure file, pen and spear pocket); brass lined; nickel silver tips and shield; cleaned inside; spear pocket blade crocus polished on one side; Smoked Pearl Celluloid handle. Bone Stag handle . . . . . No. M8429T  
Mother of Pearl handle . . . . . No. M8426T



No. M8423B

Senator pattern, 3 1/8 inches long; 3 blades (long manicure file, pen and spear pocket); brass lined; nickel silver bolsters and shield; cleaned inside; spear pocket blade crocus polished on one side; Bone Stag handle. Mother of Pearl handle . . . . . No. M8426B



No. 7429GSIL

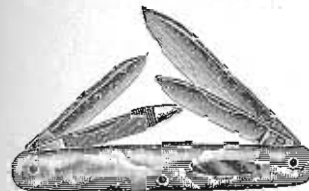
Senator pattern, 3 1/8 inches long; 2 blades; cleaned inside; large blade crocus polished on one side; Solid Thick Oval Nickel Silver handle.

Packed half dozen in a box Cuts half size



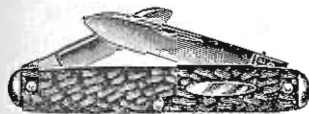
No. R7429GM

RING OPENING KNIFE, Senator pattern, 3 1/8 inches long; 2 blades; cleaned inside; large blade crocus polished on one side; Thin Oval Gun Metal handle. Nickel Silver handle . . . . . No. R7429GSIL  
Blades full crocus polished, Sterling Silver handle . . . . . No. R7429SS



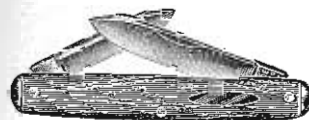
No. 9426

Senator pattern, 3 1/8 inches long; 4 blades; brass lined; nickel silver shield; cleaned inside; large blade crocus polished on one side; Mother of Pearl handle.



No. 7423T

Senator pattern, 3 1/8 inches long; 2 blades; brass lined; nickel silver tips and shield; cleaned inside; spear pocket blade crocus polished on one side; Bone Stag handle.



No. 7424CT

Senator pattern, 3 1/8 inches long; 2 blades; brass lined; nickel silver tips and shield; cleaned inside; spear pocket blade crocus polished on one side; Cocobola Celluloid handle.

Black Celluloid handle . . . . . No. 7424BT  
Goldaleur Celluloid handle . . . . . No. 7424GLT  
Golden Pearl Pyralin handle . . . . . No. 7424GPT  
Black and White Pyralin handle . . . . . No. 7424HT  
Brown Lined Cream Pyralin handle . . . . . No. 7424KT

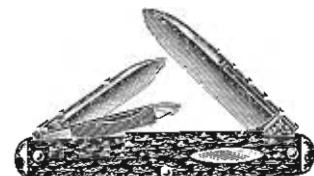
Marine Pearl Pyralin handle . . . . . No. 7424MT  
Smoked Pearl Celluloid handle . . . . . No. 7424PT  
Tortoise Shell Celluloid handle . . . . . No. 7424ST  
Ivory Celluloid handle . . . . . No. 7424WT  
Assorted Celluloid handles . . . . . No. 7424ACT

Packed half dozen in a box



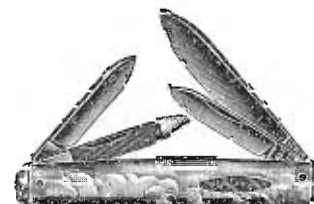
No. 7426T

Senator pattern, 3 1/8 inches long; 2 blades; brass lined; nickel silver tips; cleaned inside; spear pocket blade crocus polished on one side; Mother of Pearl handle. Without nickel silver tips, Mother of Pearl handle . . . . . No. 7426  
With nickel silver tips, Genuine Stag handle . . . . . No. 7429GST



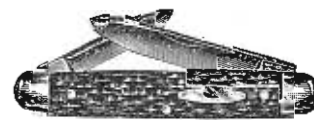
No. 8423T

Senator pattern, 3 1/8 inches long; 3 blades; brass lined; nickel silver tips and shield; cleaned inside; large blade crocus polished on one side; Bone Stag handle. Mother of Pearl handle . . . . . No. 8426T



No. 9426T

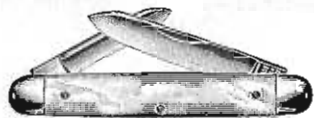
Senator pattern, 3 1/8 inches long; 4 blades; brass lined; nickel silver tips and shield; cleaned inside; large blade crocus polished on one side; Mother of Pearl handle. Bone Stag handle . . . . . No. 9423T



No. 7423B

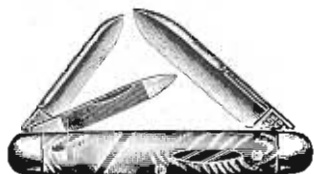
Senator pattern, 3 1/8 inches long; 2 blades; brass lined; nickel silver bolsters and shield; cleaned inside; spear pocket blade crocus polished on one side; Bone Stag handle. Marine Pearl Pyralin handle . . . . . No. 7424MB  
Ivory Celluloid handle . . . . . No. 7424WB  
Assorted Celluloid handles . . . . . No. 7424ACB

Cuts half size



No. 7426B

Senator pattern, 3 1/8 inches long; 2 blades; brass lined; nickel silver bolsters; cleaned inside; spear pocket blade crocus polished on one side; Mother of Pearl handle.



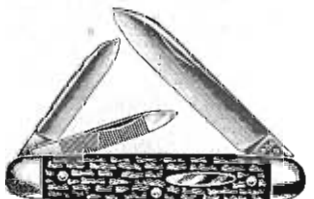
No. 8424PB

Senator pattern, 3 1/8 inches long; 3 blades; brass lined; nickel silver bolsters and shield; cleaned inside; large blade crocus polished on one side; Smoked Pearl Celluloid handle. Bone Stag handle . . . . . No. 8423B



No. 8426B

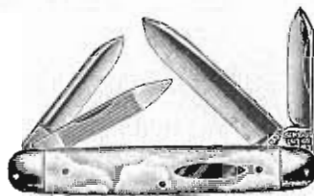
Senator pattern, 3 1/8 inches long; 3 blades; brass lined; nickel silver bolsters and shield; cleaned inside; large blade crocus polished on one side; Mother of Pearl handle.



No. L8423B

Senator pattern with extra long spear pocket blade, 3 1/8 inches long; 3 blades; brass lined; nickel silver bolsters and shield; cleaned inside; pocket blade crocus polished on one side; Bone Stag handle. Smoked Pearl Celluloid handle No. L8424PB

Packed half dozen in a box



No. 9426B

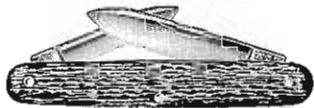
Senator pattern, 3 1/8 inches long; 4 blades; brass lined; nickel silver bolsters and shield; cleaned inside; large blade crocus polished on one side; Mother of Pearl handle. Bone Stag handle . . . . . No. 9423B Smoked Pearl Celluloid handle No. 9424PB



No. 7433

Senator pattern, 3 1/8 inches long; 2 blades; steel lined; black inside; glaze finished blades; Bone Stag handle.

- Cocobola Celluloid handle . . . . . No. 7434C
- Green Pearl Pyralin handle . . . . . No. 7434G
- Mottled Blue Pyralin handle . . . . . No. 7434MB
- Mottled Red Pyralin handle . . . . . No. 7434MR
- Onyx Celluloid handle . . . . . No. 7434O
- Smoked Pearl Celluloid handle No. 7434P
- Tortoise Shell Celluloid handle No. 7434S
- Ivory Celluloid handle . . . . . No. 7434W
- Mottled Green Celluloid handle No. 7434X
- Assortment of six colors of Celluloid and Pyralin handles packed one dozen to a box only . . . . . No. 7434AC

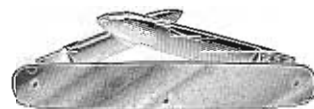


No. S7434C

Senator pattern, 3 1/8 inches long; 2 blades; brass lined; cleaned inside; large blade crocus polished on one side; Cocobola Celluloid handle.

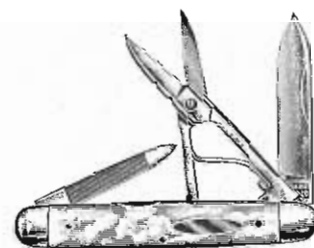
- Bone Stag handle . . . . . No. S7433
- Green Pearl Pyralin handle . . . . . No. S7434G
- Smoked Pearl Celluloid handle No. S7434P
- Tortoise Shell Celluloid handle No. S7434S
- Ivory Celluloid handle . . . . . No. S7434W
- Mottled Green Celluloid handle No. S7434X
- Assorted Celluloid handles . . . . . No. S7434AC

Cuts half size



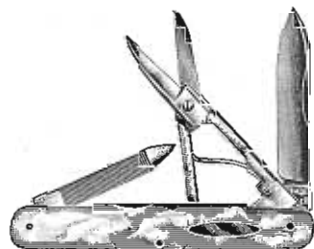
No. 7439GSIL

Senator pattern, 3 1/8 inches long; 2 blades; black inside; glaze finished blades; Flat Nickel Silver handle. Gun Metal handle . . . . . No. 7439GM



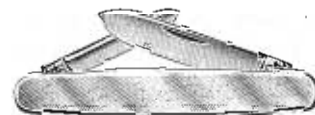
No. 8456B

Scissors Knife, Senator pattern, 3 1/8 inches long; curley point nail file, spear pocket blade and scissors; brass lined; nickel silver bolsters and shield; cleaned inside; blades full crocus polished; Mother of Pearl handle.



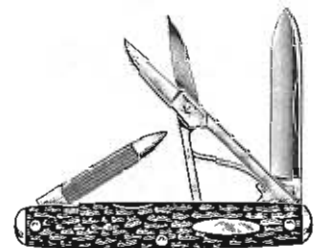
No. 8456

Scissors Knife, Senator pattern, 3 1/8 inches long; curley point nail file, spear pocket blade and scissors; brass lined; nickel silver shield; cleaned inside; blades full crocus polished; Mother of Pearl handle.



No. 7479GSIL

Senator pattern, 3 1/8 inches long; 2 blades; cleaned inside; large blade crocus polished on one side; Nickel Silver handle with beveled edges. With Shackle . . . . . No. 7479GSilShackle



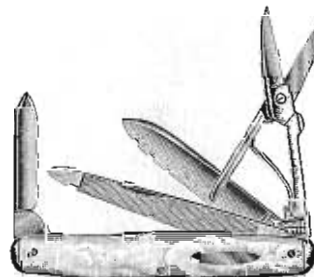
No. 8453T

Scissors Knife, Senator pattern, 3 1/8 inches long; curley point nail file, spear pocket blade and scissors; brass lined; nickel silver tips and shield; cleaned inside; blades full crocus polished; Bone Stag handle. Mother of Pearl handle . . . . . No. 8456T



No. 7486

Slim Senator pattern, sunk joint, 3 1/4 inches long, 2 blades; nickel silver lined, with milled edges; cleaned inside; blades full crocus polished; Mother of Pearl handle. Brass lined with assorted Celluloid handles . . . . . No. 7484AC



No. M9456T

Packed half dozen in a box

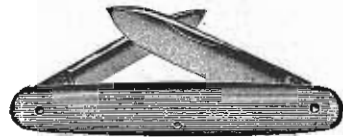
Scissors Knife, Senator pattern, 3 1/8 inches long; pen and spear pocket blades, scissors and long manicure file; brass lined; nickel silver tips and shield; cleaned inside; blades full crocus polished; Mother of Pearl handle.

Cuts half size



No. 07484W (Half Size)

Office Knife, Slim Senator sunk joint pattern,  $3\frac{1}{4}$  inches long; 2 blades (spear pocket and spey or Office blade); brass lined; cleaned inside; spear pocket blade crocus polished on one side; Ivory Celluloid handle (stamped).



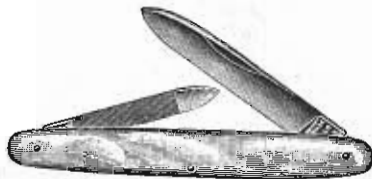
No. 7494W (Half Size)

Senator pattern, sunk joint,  $3\frac{1}{8}$  inches long; 2 blades; brass lined; cleaned inside; large blade crocus polished on one side; Ivory Celluloid handle.



No. 07494W (Half Size)

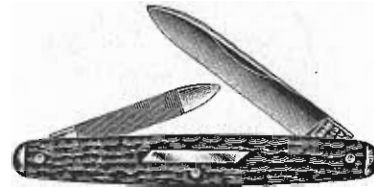
Office Knife, Senator pattern, sunk joint,  $3\frac{1}{8}$  inches long; 2 blades; brass lined; cleaned inside; large blade crocus polished on one side; Ivory Celluloid handle (stamped).

No. F7706 ( $\frac{2}{3}$  Size)

Senator pattern,  $2\frac{7}{8}$  inches long; 2 blades; brass lined; cleaned inside; large blade crocus polished on one side; Mother of Pearl handle.

Packed half dozen in a box

The following cuts  $\frac{2}{3}$  size



No. F7703T

Senator pattern,  $2\frac{7}{8}$  inches long; 2 blades; brass lined; nickel silver tips and shield; cleaned inside; large blade crocus polished on one side; Bone Stag handle.

Without Shield  
Ivory Celluloid handle . . . No. F7704WT  
Mother of Pearl handle . . . No. F7706T



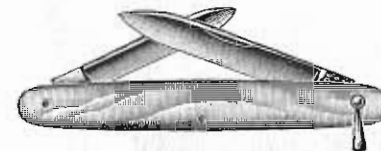
No. 7703

Senator pattern,  $2\frac{7}{8}$  inches long; 2 blades; brass lined; nickel silver shield; cleaned inside; large blade crocus polished on one side; Bone Stag handle.



No. 7706

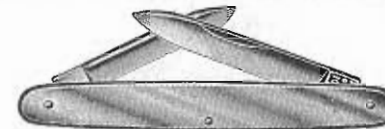
Senator pattern,  $2\frac{7}{8}$  inches long; 2 blades; brass lined; cleaned inside; large blade crocus polished on one side; Mother of Pearl handle.



No. 7706 Shackle

Senator pattern with nickel silver shackle,  $2\frac{7}{8}$  inches long; 2 blades; brass lined; cleaned inside; large blade crocus polished on one side; Mother of Pearl handle.

Cuts as indicated



No. 7709GSIL

Senator pattern,  $2\frac{7}{8}$  inches long; 2 blades; cleaned inside; large blade crocus polished on one side; Flat Nickel Silver handle.



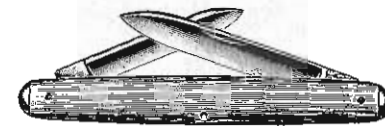
No. 7709GSIL Shackle

Senator pattern with nickel silver shackle;  $2\frac{7}{8}$  inches long; 2 blades; cleaned inside; large blade crocus polished on one side; Flat Nickel Silver handle.



No. 7703T

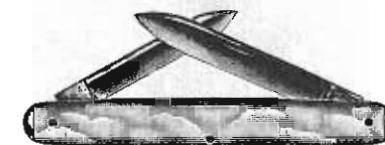
Senator pattern,  $2\frac{7}{8}$  inches long; 2 blades; brass lined; nickel silver tips and shield; cleaned inside; large blade crocus polished on one side; Bone Stag handle.



No. 7704WT

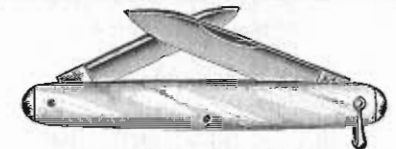
Senator pattern,  $2\frac{7}{8}$  inches long; 2 blades; brass lined; nickel silver tips; cleaned inside; large blade crocus polished on one side; Ivory Celluloid handle.

Smoked Pearl Celluloid handle No. 7704PT  
Tortoise Shell Celluloid handle No. 7704ST



No. 7706T

Packed half dozen in a box



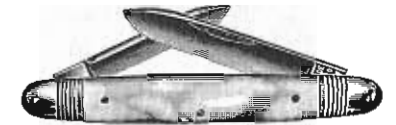
No. 7706T Shackle

Senator pattern with nickel silver shackle;  $2\frac{7}{8}$  inches long; 2 blades; brass lined; nickel silver tips; cleaned inside; large blade crocus polished on one side; Mother of Pearl handle. Tortoise Shell Cell. handle 7704STShackle Assorted Cell. handles No. 7704ACTShackle



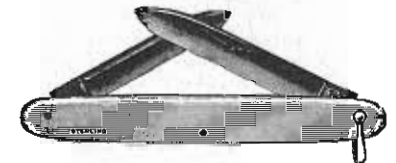
No. 7703B

Senator pattern,  $2\frac{7}{8}$  inches long; 2 blades; brass lined; nickel silver bolsters and shield; cleaned inside; large blade crocus polished on one side; Bone Stag handle.



No. 7706B

Senator pattern,  $2\frac{7}{8}$  inches long; 2 blades; brass lined; nickel silver bolsters; cleaned inside; large blade crocus polished on one side; Mother of Pearl handle.



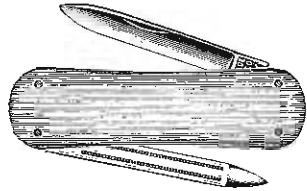
No. 7719SS Shackle

Senator pattern with Sterling Silver Shackle,  $2\frac{7}{8}$  inches long; 2 blades; cleaned inside; blades full crocus polished; Thin Oval Sterling Silver handle.

Large blade crocus polished on one side; Nickel Silver handle No. 7719 G SIL Shackle

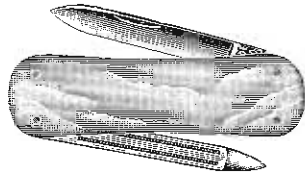
Senator pattern,  $2\frac{7}{8}$  inches long; 2 blades; brass lined; nickel silver tips; cleaned inside; large blade crocus polished on one side; Mother of Pearl handle.

Cuts  $\frac{2}{3}$  size



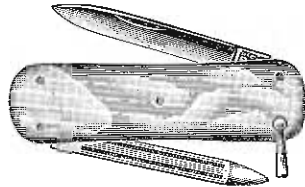
No. 7604W

Lobster pattern, 2 1/4 inches long; 2 blades; brass lined; cleaned inside; blades full crocus polished; Ivory Celluloid handle.  
Assorted Celluloid handles . . . No. 7604AC



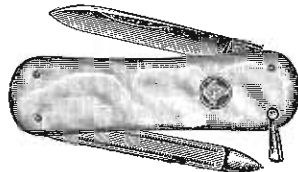
No. 7606

Lobster pattern, 2 1/4 inches long; 2 blades; nickel silver lined, with milled edges; cleaned inside; blades full crocus polished; Mother of Pearl handle.



No. 7606 Shackle

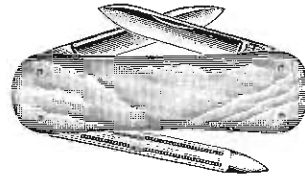
Lobster pattern with shackle, 2 1/4 inches long; 2 blades; nickel silver lined, with milled edges; cleaned inside; blades full crocus polished; Mother of Pearl handle.  
Ivory Celluloid handle . . . No. 7604WShackle  
Assorted Cell. handles . . . No. 7604ACShackle



No. 7606 Shackle Emblem

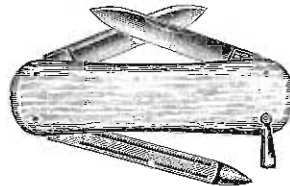
Lobster pattern with Emblem and Shackle; 2 1/4 inches long; 2 blades; nickel silver lined, with milled edges; cleaned inside; blades full crocus polished; Mother of Pearl handle.  
(Important—Refer to page 68 for list of Emblems carried in stock and then specify Organization or Lodge for which Emblem is wanted).

Packed half dozen in a box



No. 8606

Lobster pattern, 2 1/4 inches long; 3 blades; nickel silver lined, with milled edges; cleaned inside; blades full crocus polished; Mother of Pearl handle.  
Ivory Celluloid handle . . . . . No. 8604W  
Assorted Celluloid handles . . . . . No. 8604AC

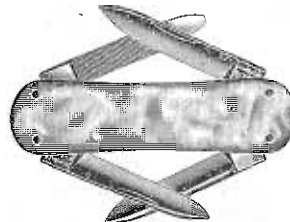


No. 8604W Shackle

Lobster pattern with shackle, 2 1/4 inches long; 3 blades; brass lined; cleaned inside; blades full crocus polished; Ivory Celluloid handle.  
Assorted Celluloid handles . . . . . No. 8604ACShackle

Mother of Pearl handle with nickel silver linings with milled edges . . . . . No. 8606Shackle  
Mother of Pearl handle with Emblem and nickel silver linings with milled edges . . . . . No. 8606Shackle Emblem

(Important—Refer to page 68 for list of Emblems carried in stock and then specify Organization or Lodge for which Emblem is wanted).

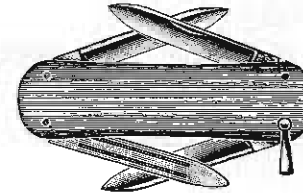


No. 9606

Lobster pattern, 2 1/4 inches long; 4 blades; nickel silver lined, with milled edges; cleaned inside; blades full crocus polished; Mother of Pearl handle.

Ivory Celluloid handle; brass lined . . . . . No. 9604W  
Assorted Celluloid handles; brass lined . . . . . No. 9604AC

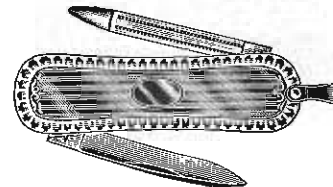
Cuts 2/3 size



No. 9604W Shackle

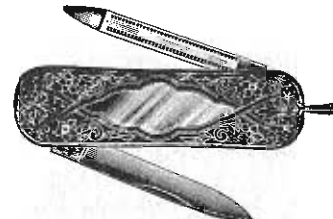
Lobster pattern with shackle, 2 1/4 inches long; 4 blades; brass lined; cleaned inside; blades full crocus polished; Ivory Celluloid handle.  
Assorted Celluloid handles . . . . . No. 9604ACShackle

Mother of Pearl handle with nickel silver linings with milled edges . . . . . No. 9606Shackle



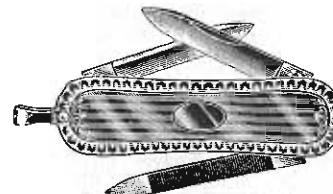
No. 7609 Gold Shackle

Lobster pattern with shackle, 2 1/4 inches long; 2 blades; nickel silver lined; cleaned inside; blades full crocus polished; 12 Karat Gold Plate handle.



No. 7609SS Shackle

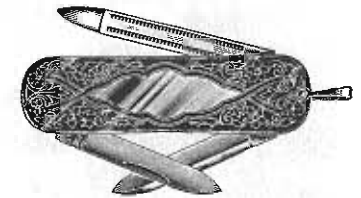
Lobster pattern with shackle, 2 1/4 inches long; 2 blades; cleaned inside; blades full crocus polished; Sterling Silver handle.



No. 8609 Gold Shackle

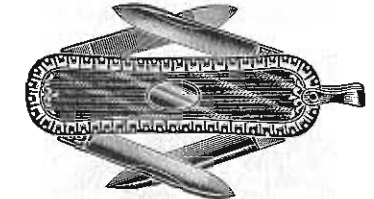
Lobster pattern with shackle, 2 1/4 inches long; 3 blades; nickel silver lined; cleaned inside; blades full crocus polished; 12 Karat Gold Plate handle.

Packed half dozen in a box



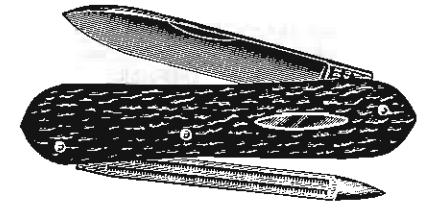
No. 8609SS Shackle

Lobster pattern with shackle, 2 1/4 inches long; 3 blades; cleaned inside; blades full crocus polished; Sterling Silver handle.



No. 9609 Gold Shackle

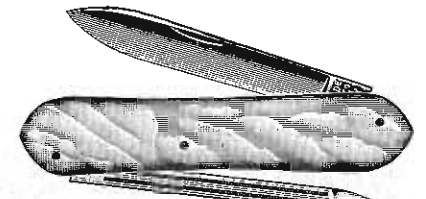
Lobster pattern with shackle, 2 1/4 inches long; 4 blades; nickel silver lined; cleaned inside; blades full crocus polished; 12 Karat Gold Plate handle.



No. 7653

Sunfish Lobster pattern, 3 inches long; 2 blades; brass lined; nickel silver shield; cleaned inside; spear blade crocus polished on one side; Bone Stag handle.

Ivory Celluloid handle (No shield) . . . . . No. 7654W  
Assorted Celluloid handles (No shield) . . . . . No. 7654AC

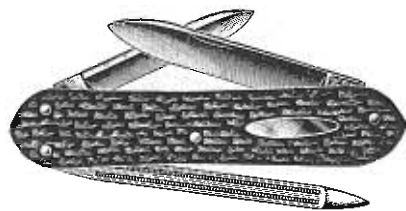


No. 7656

Sunfish Lobster pattern, 3 inches long; 2 blades; nickel silver lined; cleaned inside; blades full crocus polished; Mother of Pearl handle.

Cuts 2/3 size





No. 8653

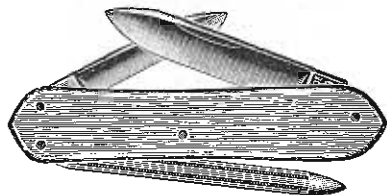
Sunfish Lobster pattern, 3 inches long; 3 blades; brass lined; nickel silver shield; cleaned inside; spear blade crocus polished on one side; Bone Stag handle.

Ivory Celluloid handle (No shield)

No. 8654W

Assorted Celluloid handles (No shield)

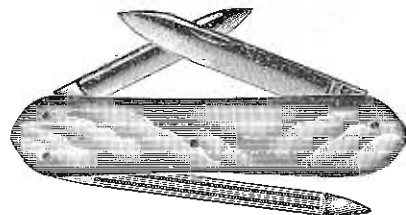
No. 8654AC



No. 8654SqW

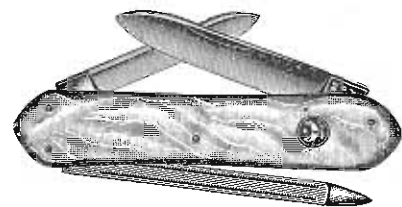
Sunfish Lobster pattern, 3 inches long; 3 blades; brass lined; cleaned inside; spear blade crocus polished on one side; Ivory Celluloid handle with beveled edges.

Assorted Celluloid handles . No. 8654SqAC



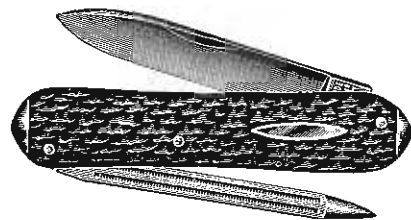
No. 8656

Sunfish Lobster pattern, 3 inches long; 3 blades; nickel silver lined, with milled edges; cleaned inside; blades full crocus polished; Mother of Pearl handle.



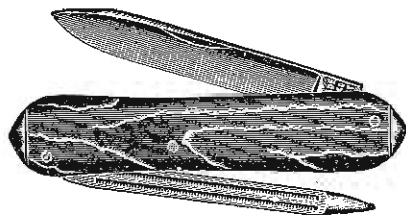
No. 8656 Emblem

Packed half dozen in a box



No. 7653T

Sunfish Lobster pattern, 3 inches long; 2 blades; brass lined; nickel silver tips and shield; cleaned inside; spear blade crocus polished on one side; Bone Stag handle.

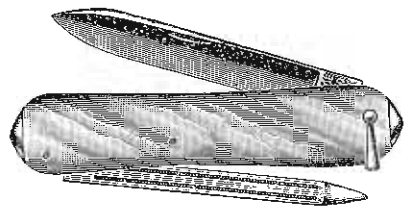


No. 7654Horn T

Sunfish Lobster pattern, 3 inches long; 2 blades; brass lined; nickel silver tips; cleaned inside; spear blade crocus polished on one side; Horn Celluloid handle.

Assorted Celluloid handles . No. 7654ACT

Mother of Pearl handle, nickel silver lined; blades full crocus polished No. 7656T



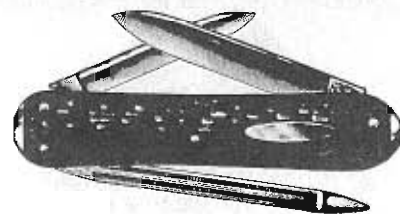
No. 7656T Shackle

Sunfish Lobster pattern with shackle, 3 inches long; 2 blades; nickel silver lined; nickel silver tips; cleaned inside; blades full crocus polished; Mother of Pearl handle.

Sunfish Lobster pattern with Emblem; 3 inches long; 3 blades; nickel silver lined, with milled edges; cleaned inside; blades full crocus polished; Mother of Pearl handle.

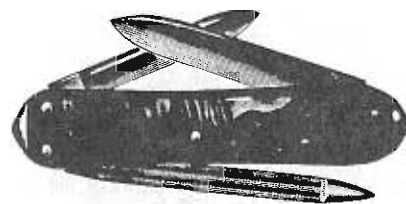
(Important—Refer to page 68 for list of Emblems carried in stock and then specify Organization or Lodge for which Emblem is wanted).

Cuts 2/3 size



No. 8653T

Sunfish Lobster pattern, 3 inches long; 3 blades; brass lined; nickel silver tips and shield; cleaned inside; spear blade crocus polished on one side; Bone Stag handle.



No. 8654GT

Sunfish Lobster pattern, 3 inches long; 3 blades; brass lined; nickel silver tips; cleaned inside; spear blade crocus polished on one side; Green Pearl Celluloid handle.

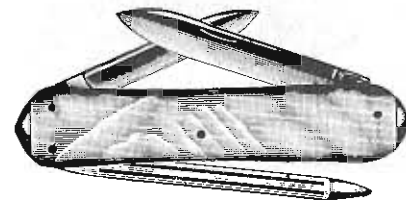
Cocobola Celluloid handle . . . No. 8654CT

Golden Pearl Celluloid handle No. 8654GPT

Tortoise Shell Celluloid handle No. 8654ST

Ivory Celluloid handle . . . No. 8654WT

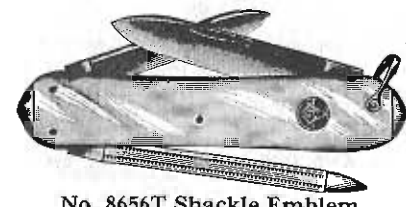
Assorted Celluloid handles . No. 8654ACT



No. 8656T

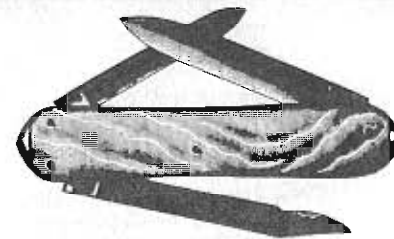
Sunfish Lobster pattern, 3 inches long; 3 blades; nickel silver lined, with milled edges; nickel silver tips; cleaned inside; blades full crocus polished; Mother of Pearl handle.

With nickel silver shackle No. 8656TShackle



No. 8656T Shackle Emblem

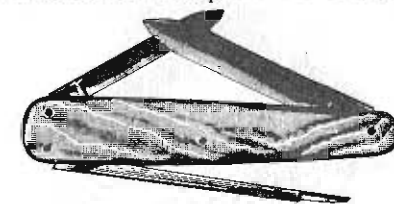
Packed half dozen in a box



No. 8666T

Sunfish Lobster pattern with cutting point nail file; 3 inches long; 3 blades; nickel silver lined, with milled edges; nickel silver tips; cleaned inside; blades full crocus polished; Mother of Pearl handle.

Without nickel silver tips . . . . . No. 8666



No. 8676

Sleeveboard Lobster pattern, 3 inches long; 3 blades; nickel silver lined, with milled edges; cleaned inside; blades full crocus polished; Mother of Pearl handle.

Goldaleur Celluloid handle, with nickel

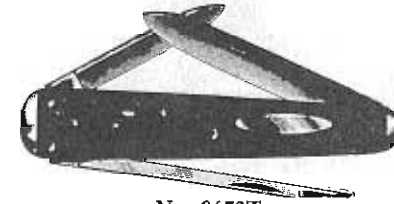
silver shackle . . . . . No. 8674GLShackle

Mother of Pearl handle, with nickel silver

shackle . . . . . No. 8676Shackle

Nickel Silver handle with nickel silver

shackle . . . . . No. 8679GSilShackle



No. 8673T

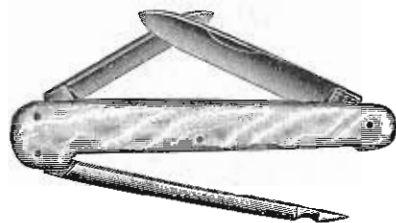
Sleeveboard Lobster pattern, 3 inches long; 3 blades; nickel silver lined, with milled edges; nickel silver tips and shield; cleaned inside; blades full crocus polished; Bone Stag handle.

Mother of Pearl handle (no shield) No. 8676T

Sunfish Lobster pattern with Emblem and shackle, 3 inches long; 3 blades; nickel silver lined, with milled edges; nickel silver tips; cleaned inside; blades full crocus polished; Mother of Pearl handle.

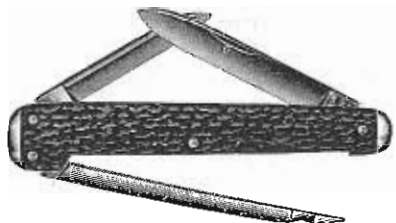
(Important—Refer to page 68 for list of Emblems carried in stock and then specify Organization or Lodge for which Emblem is wanted).

Cuts 2/3 size



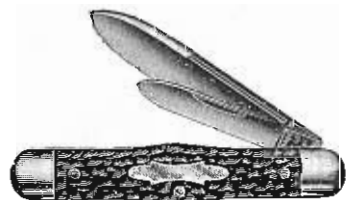
No. 8686

Sleeveboard Lobster pattern with wide nail file, 3 inches long; 3 blades; nickel silver lined, with milled edges; cleaned inside; blades full crocus polished; Mother of Pearl handle. Bone Stag handle . . . . . No. 8688



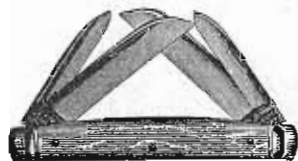
No. 8683T

Sleeveboard Lobster pattern with wide nail file, 3 inches long; 3 blades; nickel silver lined, with milled edges; nickel silver tips; cleaned inside; blades full crocus polished; Bone Stag handle.



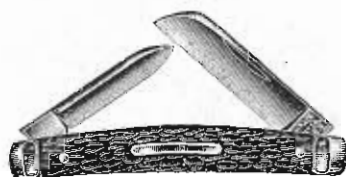
No. 2623 (Half size)

Balloon pattern, 3 1/2 inches long; 2 blades; brass lined; nickel silver bolsters and shield; cleaned inside; large blade crocus polished on one side; Bone Stag handle. Pen and clip pocket blades . . . No. 2623 3/4



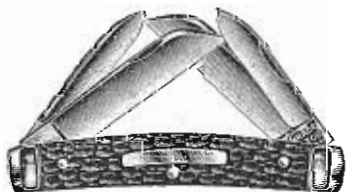
No. 9746 (Half size)

Congress pattern, 3 inches long; 4 blades; brass lined; nickel silver bolsters; cleaned inside; one large blade crocus polished on one side; Mother of Pearl handle. Bone Stag handle . . . . . No. 9743



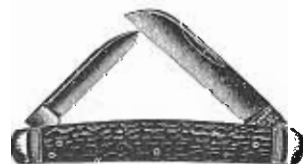
No. 7753 (Half size)

Congress pattern, 3 1/2 inches long; 2 blades; brass lined; steel bolsters; nickel silver shield; cleaned inside; large pocket blade crocus polished on one side; Bone Stag handle.



No. 9753 (Half size)

Congress pattern, 3 1/2 inches long; 4 blades; brass lined; steel bolsters; nickel silver shield; cleaned inside; one large pocket blade crocus polished on one side; Bone Stag handle.



No. 7743 (Half size)

Congress pattern, 3 inches long; 2 blades; steel bolsters; cleaned inside; pocket blade crocus polished on one side; Bone Stag handle. Mother of Pearl handle with nickel silver bolsters . . . . . No. 7746

Packed half dozen in a box

Cuts 2/3 size, except as noted



No. F9753

Congress pattern with nail file, 3 1/2 inches long; 4 blades; brass lined; steel bolsters; nickel silver shield; cleaned inside; one large pocket blade crocus polished on one side; Bone Stag handle.



No. 7786

Senator pattern, sunk joint, 3 1/8 inches long; 2 blades; brass lined; cleaned inside; large blade crocus polished on one side; Mother of Pearl handle.



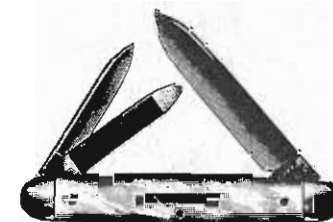
No. 7784PT

Senator pattern, sunk joint, 3 1/8 inches long; 2 blades; brass lined; nickel silver tips and shield; cleaned inside; large blade crocus polished on one side; Smoked Pearl Celluloid handle. Bone Stag handle . . . . . No. 7783T Marine Pearl Pyralin handle No. 7784MT Persian Pearl Celluloid handle No. 7784PPT Assorted Celluloid handles No. 7784ACT Mother of Pearl handle . . . No. 7786T



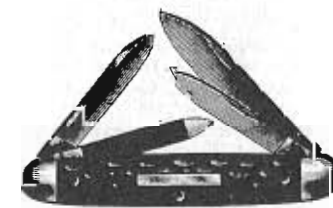
No. 7783B

Senator pattern, sunk joint, 3 1/8 inches long; 2 blades; brass lined; nickel silver bolsters and shield; cleaned inside; large blade crocus polished on one side; Bone Stag handle. Assorted Celluloid handles . . . No. 7784ACB Mother of Pearl handle . . . . . No. 7786B



No. 8786B

Senator pattern, sunk joint, 3 1/8 inches long; 3 blades; brass lined; nickel silver bolsters and shield; cleaned inside; large blade crocus polished on one side; Mother of Pearl handle. Bone Stag handle . . . . . No. 8783B



No. 9783B

Senator pattern, sunk joint, 3 1/8 inches long; 4 blades; brass lined; nickel silver bolsters and shield; cleaned inside; large blade crocus polished on one side; Bone Stag handle. Mother of Pearl handle . . . . . No. 9786B

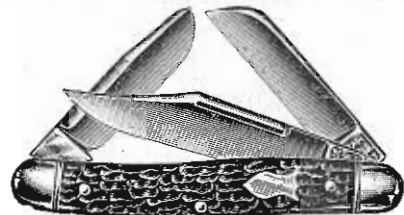


No. 9783T

Senator pattern, sunk joint, 3 1/8 inches long; 4 blades; brass lined; nickel silver tips and shield; cleaned inside; large blade crocus polished on one side; Bone Stag handle. Mother of Pearl handle . . . . . No. 9786T

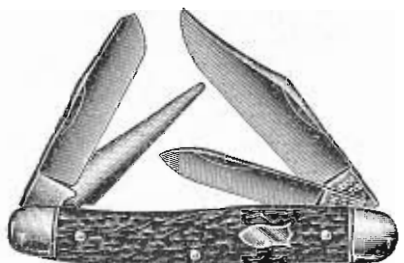
Packed half dozen in a box

Cuts half size



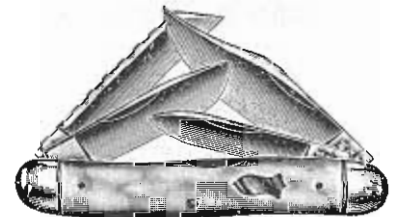
No. 8803

Premium Stock Knife, 4 inches long; 3 large pocket blades; brass lined; round end nickel silver bolsters and shield; cleaned inside; clip pocket blade crocus polished on one side; Bone Stag handle. Mother of Pearl handle; Fancy milled back . . . . . No. M8806



No. 9803LB

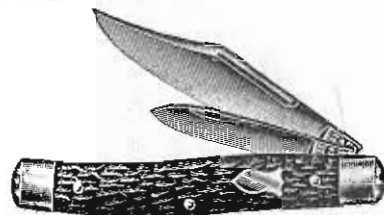
Premium Stock Knife, 4 inches long; 4 blades; brass lined; round end nickel silver bolsters and shield; cleaned inside; clip pocket blade crocus polished on one side; Bone Stag handle.



No. M9806

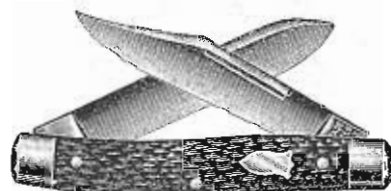
Premium Stock Knife, 4 inches long; 4 blades; nickel silver lined, with full milled back; round end nickel silver bolsters and shield; cleaned inside; blades full crocus polished; Mother of Pearl handle. Clip pocket blade, crocus polished on one side; Bone Stag handle, milled back . . . . . No. M9803

Packed half dozen in a box



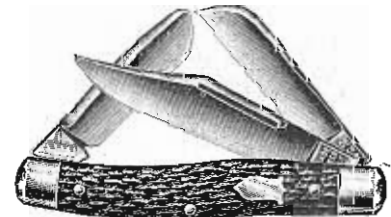
No. 2813 3/4

Texas Jack, 4 inches long; 2 blades; brass lined; nickel silver bolsters and shield; cleaned inside; clip pocket blade crocus polished on one side; Bone Stag handle. Green Pearl Celluloid handle No. 2814 3/4 G Smoked Pearl Celluloid handle No. 2814 3/4 P Assorted Celluloid handles . . . . . No. 2814 3/4 AC Pen and spear pocket blades; Bone Stag handle . . . . . No. 2813



No. 7813

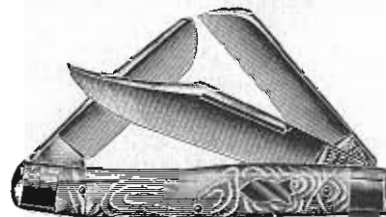
Texas Jack, 4 inches long; 2 large pocket blades; brass lined; nickel silver bolsters and shield; cleaned inside; clip pocket blade crocus polished on one side; Bone Stag handle. Ebony handle . . . . . No. 7812



No. 8813

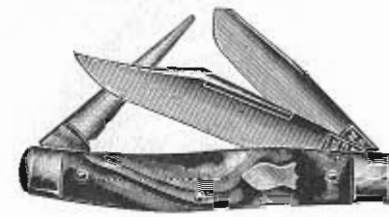
Premium Stock Knife, Texas pattern, 4 inches long; 3 blades; brass lined; nickel silver bolsters and shield; cleaned inside; clip pocket blade crocus polished on one side; Bone Stag handle.

Cuts half size



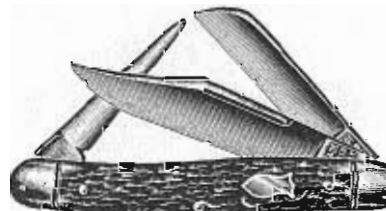
No. 8814P

Premium Stock Knife, Texas pattern, 4 inches long; 3 large pocket blades; brass lined; nickel silver bolsters and shield; cleaned inside; clip pocket blade crocus polished on one side; Smoked Pearl Celluloid handle. Green Pearl Celluloid handle No. 8814G Golden Pearl Pyralin handle . . . . . No. 8814GP Mottled Green Celluloid handle No. 8814X Assorted Celluloid handles . . . . . No. 8814AC



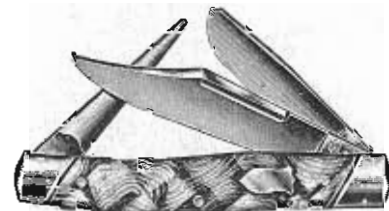
No. 8834K

Premium Stock Knife, Texas pattern, 4 inches long; 3 blades; brass lined; nickel silver bolsters and shield; cleaned inside; large pocket blade crocus polished on one side; Brown Lined Cream Pyralin handle. Abalone Pearl Pyralin handle No. 8834AP Horn Pyralin handle . . . . . No. 8834Horn



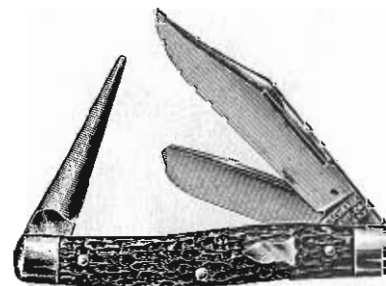
No. 8823

Premium Stock Knife, 4 inches long; 3 blades; brass lined; round end nickel silver bolsters and shield; cleaned inside; clip pocket blade crocus polished on one side; Bone Stag handle.



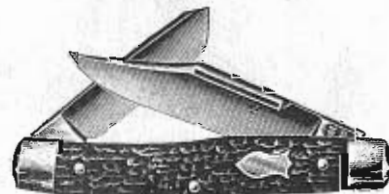
No. O8834AP

Premium Stock Knife, Texas pattern with oblique bolsters, 4 inches long; 3 blades; brass lined; nickel silver bolsters and shield; cleaned inside; clip pocket blade crocus polished on one side; Abalone Pearl Pyralin handle. Bone Stag handle . . . . . No. O8833 Assorted Celluloid handles . . . . . No. O8834AC



No. 8833

Premium Stock Knife, Texas pattern, 4 inches long; 3 blades; brass lined; nickel silver bolsters and shield; cleaned inside; clip pocket blade crocus polished on one side; Bone Stag handle.

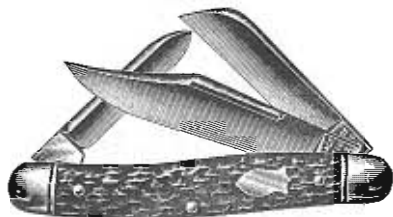


No. 7843

Texas Jack with one spring, 4 inches long; 2 blades; brass lined; nickel silver bolsters and shield; cleaned inside; large blade crocus polished on one side; Bone Stag handle.

Packed half dozen in a box

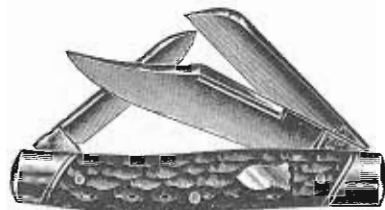
Cuts half size



No. 8873

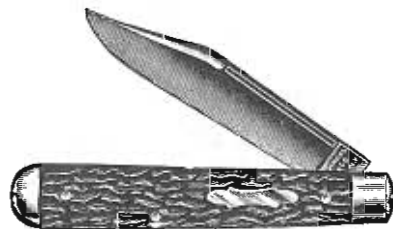
Premium Stock Knife, 4 inches long; 3 blades; brass lined; round end nickel silver bolsters and shield; cleaned inside; clip pocket blade crocus polished on one side; Bone Stag handle.

Assorted Celluloid handles . . . No. 8874AC  
Mother of Pearl handle . . . No. 8876



No. O8883

Premium Stock Knife, Texas pattern with oblique bolsters, 4 inches long; 3 blades; brass lined; nickel silver bolsters and shield; cleaned inside; large blade crocus polished on one side; Bone Stag handle.

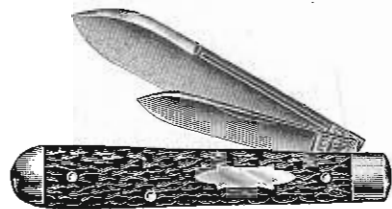


No. 1863 3/4

Large Jack Knife, 4 1/2 inches long; 1 large clip blade; brass lined; steel bolsters and caps; nickel silver shield; cleaned inside; glaze finished blade; Bone Stag handle. Nickel silver bolsters and caps with Red-White-Amber Striped Pyralin handle

No. 1864 3/4J

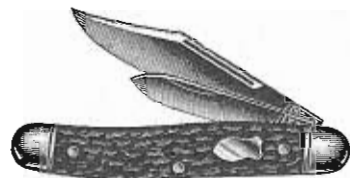
Packed half dozen in a box



No. 2863

Large Jack Knife, 4 1/2 inches long; 2 blades; brass lined; steel bolsters and caps; nickel silver shield; cleaned inside; glaze finished blades; Bone Stag handle.

Pen and clip pocket blades . . . No. 2863 3/4



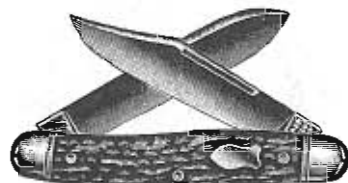
No. 2903 3/4

Premium Jack, 3 1/2 inches long; 2 blades; brass lined; nickel silver bolsters and shield; cleaned inside; large blade crocus polished on one side; Bone Stag handle.

Green Pearl Celluloid handle No. 2904 3/4G

Assorted Celluloid handles . . . No. 2904 3/4AC

Pen and spear pocket blades; Bone Stag handle . . . . . No. 2903

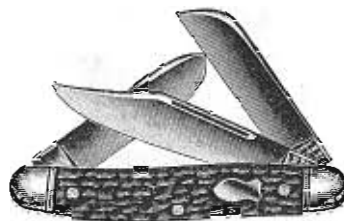


No. 7903

Premium Jack, 3 1/2 inches long; 2 large pocket blades; brass lined; nickel silver bolsters and shield; cleaned inside; clip pocket blade crocus polished on one side; Bone Stag handle.

Assorted Celluloid handles . . . No. 7904AC

Cuts half size



No. 8903

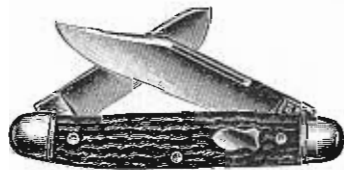
Premium Stock Knife, 3 1/2 inches long; 3 blades; brass lined; nickel silver bolsters and shield; cleaned inside; large blade crocus polished on one side; Bone Stag handle.

Brown Lined Cream Pyralin handle

No. 8904K

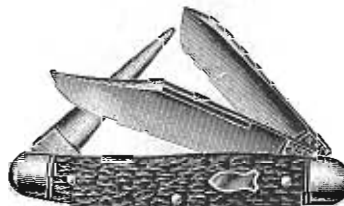
Smoked Pearl Celluloid handle No. 8904P

Assorted Celluloid handles . . . No. 8904AC



No. 7913

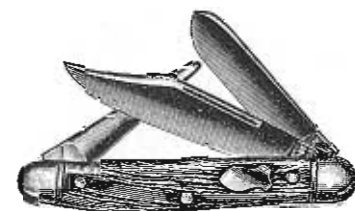
Premium Jack with one spring, 3 1/2 inches long; 2 large blades; brass lined; nickel silver bolsters and shield; cleaned inside; large blade crocus polished on one side; Bone Stag handle.



No. 8913

Premium Stock Knife, 3 1/2 inches long; 3 blades; brass lined; nickel silver bolsters and shield; cleaned inside; clip pocket blade crocus polished on one side; Bone Stag handle.

Packed half dozen in a box



No. 8914 Horn

Premium Stock Knife, 3 1/2 inches long; 3 blades; brass lined; nickel silver bolsters and shield; cleaned inside; large blade crocus polished on one side; Horn Pyralin handle.

Abalone Pearl Pyralin handle No. 8914AP

Green Pearl Pyralin handle . . . No. 8914G

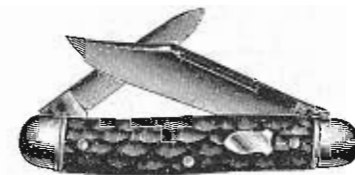
Brown Lined Cream Pyralin handle

No. 8914K

Mottled Green Celluloid handle

No. 8914X

Assorted Pyralin handles . . . No. 8914AC

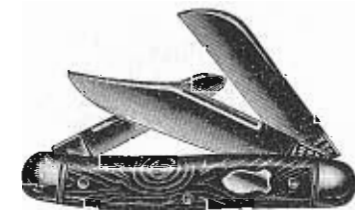


No. 7923J

Premium Jack with one spring, 3 1/2 inches long; 2 blades; brass lined; nickel silver bolsters and shield; cleaned inside; large blade crocus polished on one side; Bone Stag handle.

Green Pearl Pyralin handle . . . No. 7924G

Assorted Celluloid handles . . . No. 7924AC



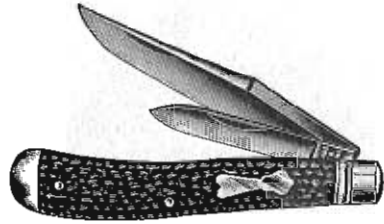
No. 8924GP

Premium Stock Knife, 3 1/2 inches long; 3 blades; brass lined; nickel silver bolsters and shield; cleaned inside; large blade crocus polished on one side; Golden Pearl Pyralin handle.

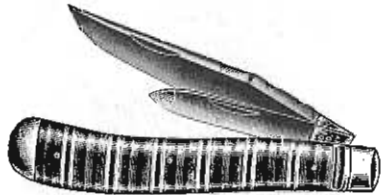
Bone Stag handle . . . . . No. 8923

Assorted Pyralin handles . . . No. 8924AC

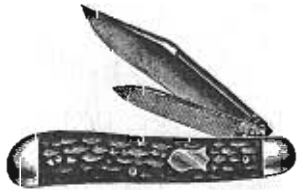
Cuts half size

No. 2943 $\frac{3}{4}$ 

Serpentine Jack Knife,  $3\frac{7}{8}$  inches long; pen and half saber clip pocket blades; brass lined; nickel silver bolsters, caps and shield; cleaned inside; large blade crocus polished on one side; Bone Stag handle.  
One blade knife, same as above, without pen blade; glaze finished blade No. 1943 $\frac{3}{4}$

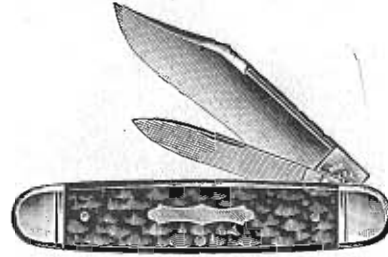
No. 2944 $\frac{3}{4}$ J

Serpentine Jack Knife,  $3\frac{7}{8}$  inches long; pen and half saber clip pocket blades; brass lined; nickel silver bolsters and caps; cleaned inside; large blade crocus polished on one side; Red-White-Amber Striped Pyralin handle.  
One blade knife; same as above without pen blade, glaze finished blade No. 1944 $\frac{3}{4}$ J

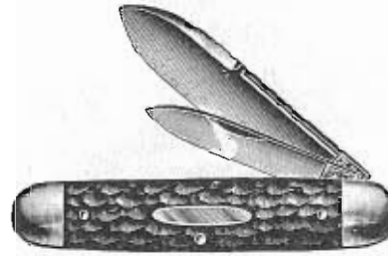
No. 2953 $\frac{3}{4}$ 

Serpentine Jack Knife, 3 inches long; 2 blades; brass lined; nickel silver bolsters, caps and shield; cleaned inside; large blade crocus polished on one side; Bone Stag handle.  
Marine Pearl Pyralin handle No. 2954 $\frac{3}{4}$ M  
Smoked Pearl Celluloid handle No. 2954 $\frac{3}{4}$ P  
Assorted Celluloid handles No. 2954 $\frac{3}{4}$ AC  
Mother of Pearl handle No. 2956 $\frac{3}{4}$   
Pen and spear pocket blades; Bone Stag handle No. 2953  
Assorted Celluloid handles No. 2954AC

Packed half dozen in a box

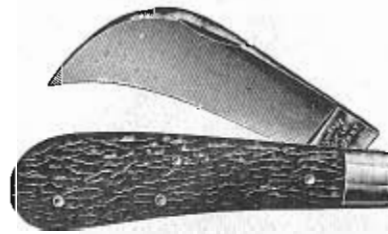
No. 2973 $\frac{3}{4}$ 

Equal End Jack Knife,  $4\frac{1}{4}$  inches long; 2 blades; brass lined; nickel silver flat bevel bolsters and shield; cleaned inside; large blade crocus polished on one side; Bone Stag handle.  
Ivory Celluloid handle . . . . . No. 2974 $\frac{3}{4}$ W



No. R2973

Equal End Jack Knife,  $4\frac{1}{4}$  inches long; 2 blades; brass lined; round nickel silver bolsters and shield; cleaned inside; large blade crocus polished on one side; Bone Stag handle.  
Ivory Celluloid handle . . . . . No. R2974W



No. 1003

PRUNING KNIFE, 4 inches long; one large pruning blade; steel lined; steel bolsters; black inside; glaze finished blade; Bone Stag handle.  
Cocobola handle . . . . . No. 1001

Cuts half size

## SCHRADER SAFETY PUSH BUTTON KNIFE

THE ONLY AUTOMATIC KNIFE WITH A SAFETY LOCK—  
DOUBLE LOCKED WHEN SAFETY IS IN ACTION.

Operated With One Hand.

No Breaking of Finger Nails.

Will Not Open in Your Pocket.

Will Not Close on the Fingers When In Use.

THE Schrade Safety Push Button Knife, of which we are the exclusive manufacturers, is rapidly becoming the leading knife on the market because of its many advantages over the ordinary pocket knife. Being easily operated with one hand it is far more convenient than the old style pocket knife which necessitates the use of both hands to open and frequently results in broken finger nails. The greatest care has been exercised in the development and manufacture of this knife and to-day it is one of the outstanding achievements of the cutler's skill.

This novel knife is especially suitable for a gift or souvenir, as it is something out of the ordinary, very useful, and when furnished with one of our attractive handles makes an ideal gift.

Our Safety Push Button Knives are manufactured in five sizes, in a great variety of handles and styles, illustrations of which, are shown on the following pages.

"SCHRADER Safety Push Button Knives are the pioneer SAFETY Knives, and do not infringe the patent rights of anyone."

TRADE **EVERLASTINGLY SHARP** MARK



No. 740SSD

Safety Push Button Knife, 3 $\frac{3}{8}$  inches long; 2 blades; nickel silver lined; cleaned inside; blades full crocus polished; DeLuxe Sterling Silver handle.

12 Karat Gold Plate handle . . . No. 740Gold



No. 740SSET

Safety Push Button Knife, 3 $\frac{3}{8}$  inches long; 2 blades; nickel silver lined; cleaned inside; blades full crocus polished; Engine Turned Sterling Silver handle.

Scroll Sterling Silver handle . . . No. 740SSS



No. 7403

Safety Push Button Knife, 3 $\frac{3}{8}$  inches long; 2 blades; brass lined; cleaned inside; large blade crocus polished on one side; Bone Stag handle.



No. 7404 Blue

Safety Push Button Knife, 3 $\frac{3}{8}$  inches long; 2 blades; brass lined; cleaned inside; large blade crocus polished on one side; Blue Pearl Celluloid handle.

Abalone Pearl Pyralin handle

No. 7404AP

Black Celluloid handle . . . No. 7404B

Black Pearl Celluloid handle No. 7404BP

Bronze Celluloid handle . . . No. 7404BRNZ

Packed half dozen in a box



No. 7404C

Safety Push Button Knife, 3 $\frac{3}{8}$  inches long; 2 blades; brass lined; cleaned inside; large blade crocus polished on one side; Cocobola Celluloid handle.

Green Pearl Celluloid handle No. 7404G

Golden Pearl Celluloid handle No. 7404GP

Horn Celluloid handle . . . No. 7404Horn

Brown Lined Cream Pyralin handle

No. 7404K

Onyx Celluloid handle . . . No. 7404O

Smoked Pearl Celluloid handle No. 7404P



No. 7404S

Safety Push Button Knife, 3 $\frac{3}{8}$  inches long; 2 blades; brass lined; cleaned inside; large blade crocus polished on one side; Tortoise Shell Celluloid handle.

Ivory Celluloid handle . . . No. 7404W

Mottled Green Celluloid handle No. 7404X

Assorted Celluloid handles . . . No. 7404AC



No. O7404W

Safety Push Button OFFICE Knife, 3 $\frac{3}{8}$  inches long; 2 blades (spear pocket and spey or Office blade); brass lined; cleaned inside; spear pocket blade crocus polished on one side; Ivory Celluloid handle (stamped).



No. NO7404W

Safety Push Button OFFICE Knife, 3 $\frac{3}{8}$  inches long; 2 blades (pen and spey pocket or Office blade); brass lined; cleaned inside; spey pocket or Office blade crocus polished on one side; Ivory Celluloid handle (stamped).

Cuts half size



No. 7406

Safety Push Button Knife, 3 $\frac{3}{8}$  inches long; 2 blades; nickel silver lined; cleaned inside; blades full crocus polished; Mother of Pearl handle.



No. 7403T

Safety Push Button Knife, 3 $\frac{3}{8}$  inches long; 2 blades; brass lined; nickel silver tips; cleaned inside; large blade crocus polished on one side; Bone Stag handle.



No. 7404GT

Safety Push Button Knife, 3 $\frac{3}{8}$  inches long; 2 blades; brass lined; nickel silver tips; cleaned inside; large blade crocus polished on one side; Green Pearl Celluloid handle.

Black Celluloid handle . . . No. 7404BT

Black Pearl Celluloid handle No. 7404BPT

Blue Pearl Celluloid handle No. 7404BlueT

Cocobola Celluloid handle . . . No. 7404CT



No. 7404PT

Safety Push Button Knife, 3 $\frac{3}{8}$  inches long; 2 blades; brass lined; nickel silver tips; cleaned inside; large blade crocus polished on one side; Smoked Pearl Celluloid handle.

Golden Pearl Celluloid handle No. 7404GPT

Horn Celluloid handle . . . No. 7404HornT

Brown Lined Cream Pyralin

handle No. 7404KT

TortoiseShellCelluloid handle No. 7404ST

Ivory Celluloid handle . . . No. 7404WT

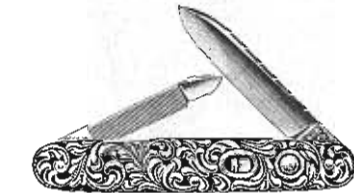
Assorted Celluloid handles . . . No. 7404ACT

Packed half dozen in a box



No. 7406T

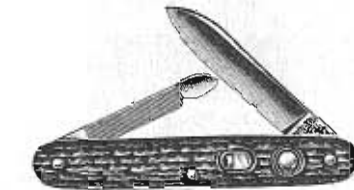
Safety Push Button Knife, 3 $\frac{3}{8}$  inches long; 2 blades; nickel silver lined; nickel silver tips; cleaned inside; blades full crocus polished; Mother of Pearl handle.



No. 741SSS

Safety Push Button Knife, 3 $\frac{3}{8}$  inches long; 2 blades; nickel silver lined; cleaned inside; blades full crocus polished; Scroll Sterling Silver handle.

DeLuxe Sterling Silver handle No. 741SSD



No. 7413

Safety Push Button Knife, 3 $\frac{3}{8}$  inches long; 2 blades; brass lined; cleaned inside; large blade crocus polished on one side; Bone Stag handle.



No. 7414S

Safety Push Button Knife, 3 $\frac{3}{8}$  inches long; 2 blades; brass lined; cleaned inside; large blade crocus polished on one side; Tortoise Shell Celluloid handle.

Black Celluloid handle . . . . . No. 7414B

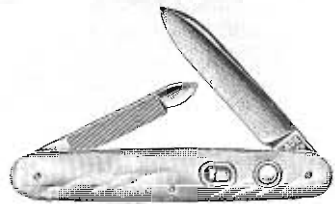
Cocobola Celluloid handle . . . . . No. 7414C

Green Pearl Celluloid handle . . . . . No. 7414G

Smoked Pearl Celluloid handle . . . . . No. 7414P

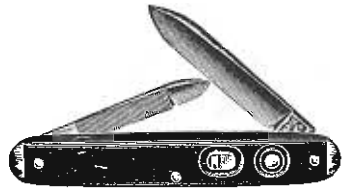
Ivory Celluloid handle . . . . . No. 7414W

Cuts half size



No. 7416

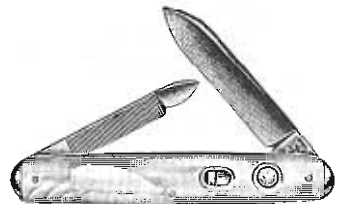
Safety Push Button Knife, 3 $\frac{3}{8}$  inches long; 2 blades; nickel silver lined; cleaned inside; blades full crocus polished; Mother of Pearl handle.



No. 7414BT

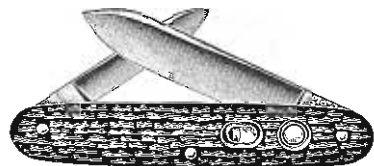
Safety Push Button Knife, 3 $\frac{3}{8}$  inches long; 2 blades; brass lined; nickel silver tips; cleaned inside; large blade crocus polished on one side; Black Celluloid handle.

Bone Stag handle . . . . . No. 7413T  
Tortoise Shell Celluloid handle No. 7414ST  
Ivory Celluloid handle . . . . . No. 7414WT



No. 7416T

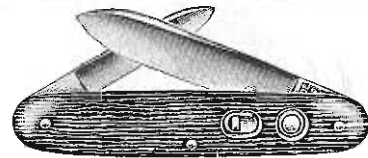
Safety Push Button Knife, 3 $\frac{3}{8}$  inches long; 2 blades; nickel silver lined; nickel silver tips; cleaned inside; blades full crocus polished; Mother of Pearl handle.



No. 7503

Safety Push Button Knife, 3 $\frac{3}{4}$  inches long; 2 blades; brass lined; cleaned inside; large blade crocus polished on one side; Bone Stag handle.

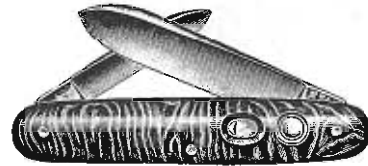
*Packed half dozen in a box*



No. 7504C

Safety Push Button Knife, 3 $\frac{3}{4}$  inches long; 2 blades; brass lined; cleaned inside; large blade crocus polished on one side; Cocobola Celluloid handle.

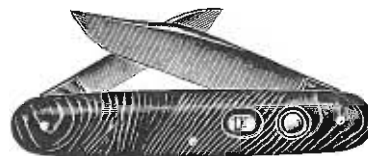
Black Celluloid handle . . . No. 7504B  
Bronze Celluloid handle . . . No. 7504BRNZ  
Green Pearl Celluloid handle No. 7504G



No. 7504GP

Safety Push Button Knife, 3 $\frac{3}{4}$  inches long; 2 blades; brass lined; cleaned inside; large blade crocus polished on one side; Golden Pearl Celluloid handle.

Horn Celluloid handle . . . . . No. 7504Horn  
Brown Lined Cream Pyralin handle No. 7504K  
Onyx Celluloid handle . . . . . No. 7504O  
Smoked-Pearl Celluloid handle No. 7504P  
Tortoise Shell Celluloid handle No. 7504S  
Ivory Celluloid handle . . . . . No. 7504W  
Mottled Green Celluloid handle No. 7504X  
Assorted Celluloid handles . . . No. 7504AC

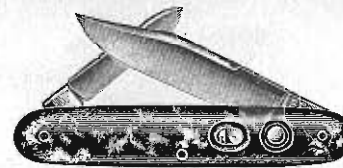


No. 7504G

Safety Push Button Knife, 3 $\frac{3}{4}$  inches long; 2 blades; brass lined; cleaned inside; large blade crocus polished on one side; Green Pearl Celluloid handle.

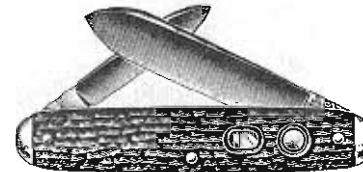
Bone Stag handle . . . . . No. 7503 $\frac{3}{4}$   
Black Pearl Cell. handle No. 7504 $\frac{3}{4}$ BP  
Bronze Celluloid handle . . . No. 7504 $\frac{3}{4}$ BRNZ  
Cocobola Celluloid handle No. 7504 $\frac{3}{4}$ C  
Golden Pearl Cell. handle No. 7504 $\frac{3}{4}$ GP  
Horn Celluloid handle . . . No. 7504 $\frac{3}{4}$ Horn  
Brown Lined Cream Pyralin handle No. 7504 $\frac{3}{4}$ K  
Onyx Celluloid handle . . . No. 7504 $\frac{3}{4}$ O  
Smoked Pearl Celluloid handle No. 7504 $\frac{3}{4}$ P  
Ivory Celluloid handle . . . . . No. 7504 $\frac{3}{4}$ W

*Cuts half size*

No. 7504 $\frac{3}{4}$ S

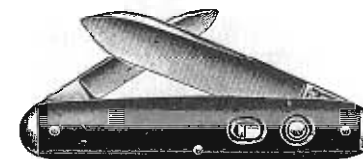
Safety Push Button Knife, 3 $\frac{3}{4}$  inches long; 2 blades; brass lined; cleaned inside; large blade crocus polished on one side; Tortoise Shell Celluloid handle.

Ivory Celluloid handle . . . . . No. 7504 $\frac{3}{4}$ W  
Mottled Green Celluloid handle No. 7504 $\frac{3}{4}$ X  
Assorted Celluloid handles . . . No. 7504 $\frac{3}{4}$ AC



No. 7503T

Safety Push Button Knife, 3 $\frac{3}{4}$  inches long; 2 blades; brass lined; nickel silver tips; cleaned inside; large blade crocus polished on one side; Bone Stag handle.

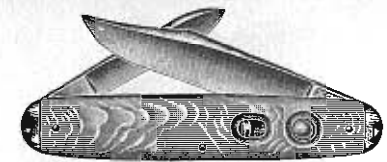


No. 7504BT

Safety Push Button Knife, 3 $\frac{3}{4}$  inches long; 2 blades; brass lined; nickel silver tips; cleaned inside; large blade crocus polished on one side; Black Celluloid handle.

Cocobola Celluloid handle . . . No. 7504CT  
Green Pearl Celluloid handle No. 7504GT  
Brown Lined Cream Pyralin handle No. 7504KT  
Smoked Pearl Celluloid handle No. 7504PT  
Tortoise Shell Celluloid handle No. 7504ST  
Ivory Celluloid handle . . . . . No. 7504WT

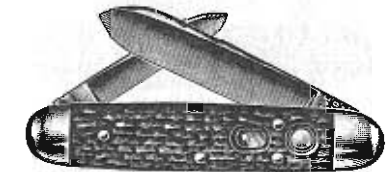
*Packed half dozen in a box*

No. 7504 $\frac{3}{4}$ PT

Safety Push Button Knife, 3 $\frac{3}{4}$  inches long; 2 blades; brass lined; nickel silver tips; cleaned inside; large blade crocus polished on one side; Smoked Pearl Celluloid handle.

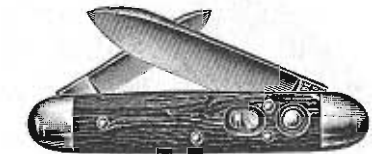
Bone Stag handle . . . . . No. 7503 $\frac{3}{4}$ T  
Black Celluloid handle . . . . . No. 7504 $\frac{3}{4}$ BT  
Cocobola Celluloid handle . . . No. 7504 $\frac{3}{4}$ CT  
Tortoise Shell Celluloid handle No. 7504 $\frac{3}{4}$ ST

Ivory Celluloid handle . . . . . No. 7504 $\frac{3}{4}$ WT



No. 7503B

Safety Push Button Knife, 3 $\frac{3}{4}$  inches long; 2 blades; brass lined; nickel silver bolsters; cleaned inside; large blade crocus polished on one side; Bone Stag handle.

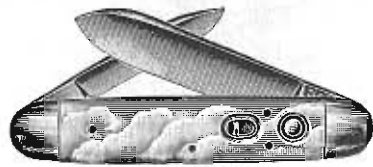


No. 7504CB

Safety Push Button Knife, 3 $\frac{3}{4}$  inches long; 2 blades; brass lined; nickel silver bolsters; cleaned inside; large blade crocus polished on one side; Cocobola Celluloid handle.

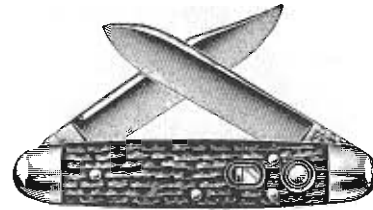
Black Celluloid handle . . . . . No. 7504BB  
Smoked Pearl Celluloid handle No. 7504PB  
Tortoise Shell Celluloid handle No. 7504SB  
Ivory Celluloid handle . . . . . No. 7504WB

*Cuts half size*



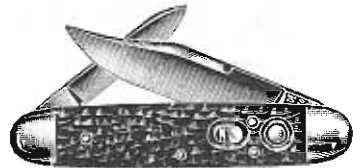
No. 7506B

Safety Push Button Knife, 3¾ inches long; 2 blades; brass lined; nickel silver bolsters; cleaned inside; large blade crocus polished on one side; Mother of Pearl handle.



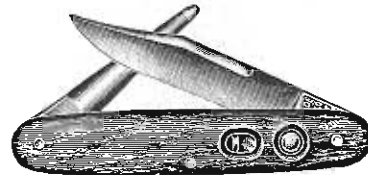
No. 7523B

Safety Push Button Knife, 3¾ inches long; 2 large blades; brass lined; nickel silver bolsters; cleaned inside; one pocket blade crocus polished on one side; Bone Stag handle. Clip and spey pocket blades . No. 7523¼B



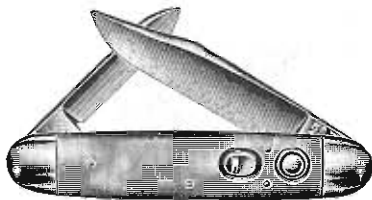
No. 7503¼B

Safety Push Button Knife, 3¾ inches long; 2 blades; brass lined; nickel silver bolsters; cleaned inside; large blade crocus polished on one side; Bone Stag handle.



No. 7534¼C

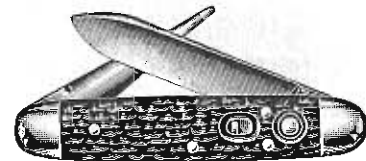
Safety Push Button Knife, 3¾ inches long; 2 blades (leather punch and clip pocket); brass lined; cleaned inside; pocket blade crocus polished on one side; Cocobola Celluloid handle. Leather punch and spear pocket blades No. 7534C



No. 7504¼PB

Safety Push Button Knife, 3¾ inches long; 2 blades; brass lined; nickel silver bolsters; cleaned inside; large blade crocus polished on one side; Smoked Pearl Celluloid handle. Black Celluloid handle . . . No. 7504¼BB  
Cocobola Celluloid handle . . . No. 7504¼CB  
TortoiseShell Celluloid handle No. 7504¼SB  
Ivory Celluloid handle . . . No. 7504¼WB  
Mother of Pearl handle . . . No. 7506¼B

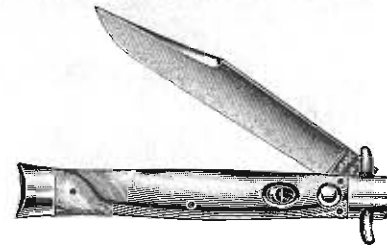
Packed half dozen in a box



No. 7533B

Safety Push Button Knife, 3¾ inches long; 2 blades (leather punch and spear pocket); brass lined; nickel silver bolsters; cleaned inside; pocket blade crocus polished on one side; Bone Stag handle. Leather punch and spey pocket blades No. 7533¼B  
Leather punch and clip pocket blades No. 7533¼B

Cuts half size

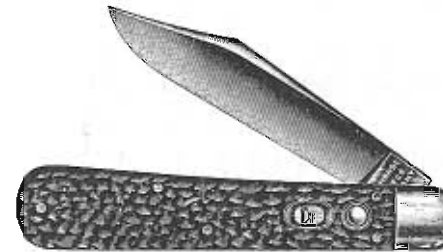


No. G1514K

Safety Push Button Knife, Dagger type, 4 inches long; slim clip blade; brass lined; nickel silver bolsters with guard; nickel silver caps; cleaned inside; blade crocus polished on one side; Brown Lined Cream Pyralin handle.

Red-White-Amber Striped Pyralin handle . . . . . No. G1514J  
Same as above, without guard on bolsters; Assorted Pyralin handles No. 1514AC

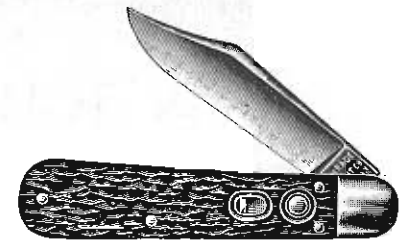
HUNTING KNIFE



No. 1543¼

Safety Push Button Knife, 4⅞ inches long; large clip blade; steel lined; steel bolsters; cleaned inside; glaze finished blade; Bone Stag handle.

Packed half dozen in a box



No. 1553¼

Safety Push Button Knife, 4¼ inches long; large clip blade; steel lined; steel bolsters; cleaned inside; glaze finished blade; Bone Stag handle. Large spear blade . . . . . No. 1553

HUNTING KNIFE



No. 1613¼

Safety Push Button Knife, 4⅞ inches long; large saber clip blade; steel lined, nickel silver bolsters; cleaned inside; blade one-half crocus polished on one side; Bone Stag handle.

Cuts half size

INSTRUCTIONS TO OPERATE  
SCHRADE SAFETY PUSH BUTTON KNIVES

Important—To open or close—The button must be pressed.

**NEVER USE FORCE.** Use only one hand.

**To Open.** Unlock by pulling safety slide away from button, push the button, and the blade will open and lock in an open position.

**To Close.** Push the button and hold to release lock, then close blade with index finger and when it locks move safety slide toward button as far as it will go. In this condition the knife is **DOUBLE LOCKED** and cannot open while being carried in the pocket.



# SCHRADER STAINLESS STEEL POCKET KNIVES

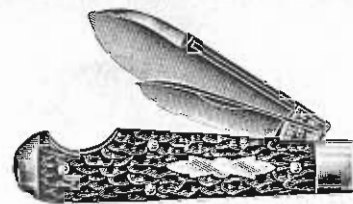
Stainless Steel represents the result of a great many years of experiment and research on the part of eminent metallurgists. During the past decade the fruits of this work have been put to practical use in the form of a Stainless Steel suitable for pocket knife blades and springs. As the name implies, it is proof against the ordinary agencies of rust, stain and corrosion.

When we began the manufacture of blades and springs out of Stainless Steel, many new and difficult problems appeared, especially in heat treating and polishing. By persevering and selecting only the best Stainless Steel to be had, we have finally succeeded in producing a satisfactory Stainless Steel Knife. We feel confident that an examination and trial of our product will demonstrate the excellence of Schrade Stainless Steel Pocket Knives.

On the following pages will be found illustrations and descriptions of our Stainless Steel line.

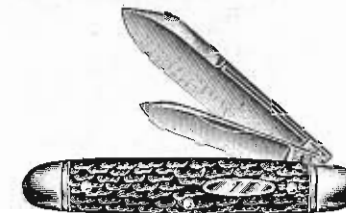
## *Schrade Stainless Steel Pocket Knives Are*

TRADE **EVERLASTINGLY SHARP** MARK



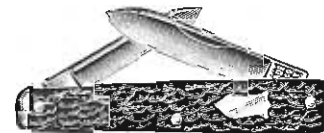
No. SS2013

Easy Opener Jack with STAINLESS STEEL blades and springs,  $3\frac{3}{8}$  inches long; 2 blades; brass lined; nickel silver bolsters, caps and shield; cleaned inside; large blade crocus polished on one side; Bone Stag handle.



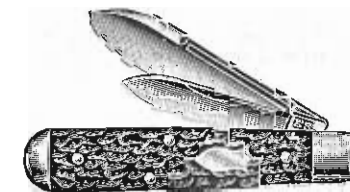
No. SS2563

Equal End Jack with STAINLESS STEEL blades and springs,  $3\frac{3}{8}$  inches long; 2 blades; brass lined; nickel silver bolsters and shield; cleaned inside; large blade crocus polished on one side; Bone Stag handle.  
Assorted Celluloid handles No. SS2564AC



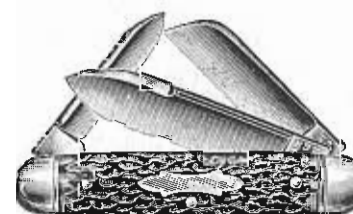
No. SS7113T

Sleeveboard pattern with STAINLESS STEEL blades and springs,  $3\frac{3}{8}$  inches long; 2 blades; brass lined; nickel silver tips and shield; cleaned inside; large blade crocus polished on one side; Bone Stag handle.  
Assorted Celluloid handles No. SS7114ACT



No. SS2213

Jack Knife with STAINLESS STEEL blades and springs,  $3\frac{1}{2}$  inches long; 2 blades; brass lined; nickel silver bolsters, caps and shield; cleaned inside; large blade crocus polished on one side; Bone Stag handle.



No. SS8173

Cattle Knife with STAINLESS STEEL blades and springs,  $3\frac{5}{8}$  inches long; 3 blades; brass lined; nickel silver bolsters and shield; cleaned inside; large pocket blade crocus polished on one side; Bone Stag handle.

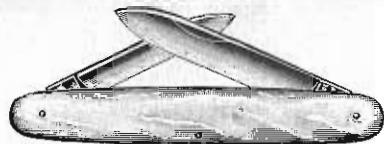


No. SS2423

Equal End Jack Knife, Slim pattern, with STAINLESS STEEL blades and springs,  $3\frac{1}{8}$  inches long; 2 blades; brass lined; nickel silver bolsters and shield; cleaned inside; large blade crocus polished on one side; Bone Stag handle.  
Assorted Celluloid handles . No. SS2424AC  
Mother of Pearl handle . . . No. SS2426

*Packed half dozen in a box*

*Cuts half size*



No. SS7486 (2/3 size)

Slim Senator pattern, sunk joint, with STAINLESS STEEL blades and spring, 3 1/4 inches long; 2 blades; nickel silver lined, with milled edges; cleaned inside; large blade crocus polished on one side. Mother of Pearl handle.



No. SS7783B

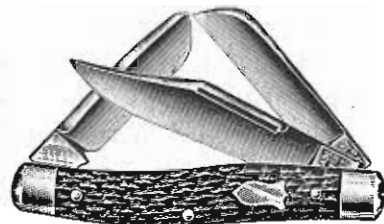
Senator pattern, sunk joint, with STAINLESS STEEL blades and spring, 3 3/8 inches long; 2 blades; brass lined; nickel silver bolsters and shield; cleaned inside; large blade crocus polished on one side; Bone Stag handle. Assorted Celluloid handles No. SS7784ACB Mother of Pearl handle . No. SS7786B



No. SS7753

Congress pattern with STAINLESS STEEL blades and spring, 3 1/2 inches long; 2 blades; brass lined; nickel silver bolsters and shield; cleaned inside; large blade crocus polished on one side; Bone Stag handle.

*Packed half dozen in a box*



No. SS8813

Premium Stock Knife, Texas pattern, with STAINLESS STEEL blades and springs. 4 inches long; 3 blades; brass lined; nickel silver bolsters and shield; cleaned inside; clip pocket blade crocus polished on one side; Bone Stag handle.

*Cuts half size except as noted*

### ADVANTAGES OF STAINLESS STEEL POCKET KNIVES

Schrade Stainless Steel knives are especially suitable for all outdoor work or sport. Farmers, linemen, cattlemen, etc., will welcome a pocket knife which will not rust, even though it is used in the rain, or left in a damp place. For use in outdoor sports such as fishing, hunting, boating, especially on salt water, it has no equal. Stainless Steel knives can be used for cleaning fish, skinning, cutting or peeling vegetables, fruits, etc., without the least danger of stain or rust. If one of our Stainless Steel knives is used as above and not cleaned even if left for a long time, it will not be damaged at all. Simply wash it off and it will be as clean and bright as when new.

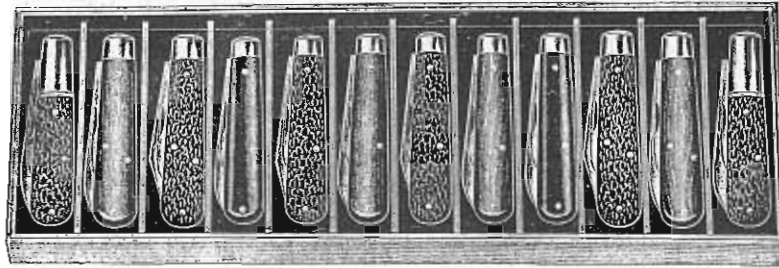
## SCHRADER POCKET KNIFE ASSORTMENTS

During recent years, selling pocket knives in assortments has become quite general. Therefore we have prepared a line of assortments based upon the needs of the various sections of the United States. One of the features of the SCHRADER ASSORTMENTS is that in selecting the pocket knives that comprise the same we have only adopted patterns that have proven themselves live sellers. Also we have kept in mind the absolute necessity of having each assortment consist of pocket knives of one value, so the dealer will not be taxed with the responsibility of pricing out different valued knives in the same assortment.

In order to facilitate the matter of pricing out the knives comprising our assortments both in this catalog and on all our assortment circulars the suggested resale price to the consumer is given. Our assortments comprise a good range of prices, from the inexpensive 2 blade knives to the more expensive 3 blade and pearl handled knives, including 2 assortments of our Safety Push Button Knives.

Selling pocket knives in assortments enables a retail dealer to have a wide range of patterns to sell with the least possible investment.

We ship these assortments in attractive display trays, ready to place on sale in windows or show cases. For full descriptions and illustrations see following pages.

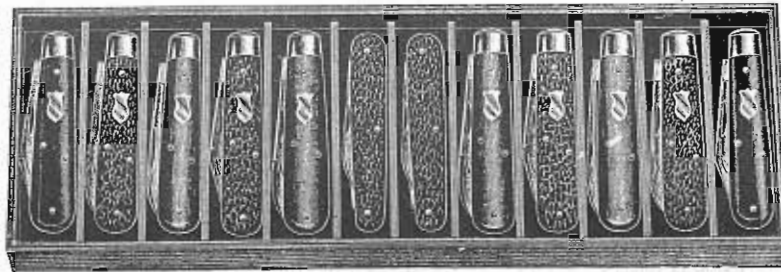


Assortment No. 2

(Sell to consumer at 50¢ to 60¢ each)

Two Blade Medium Jack Knives; a variety of blade combinations; steel lined; glaze finished blades; Cocobola, Ebony and Bone Stag handles.

One dozen packed in attractive velour lined display tray.



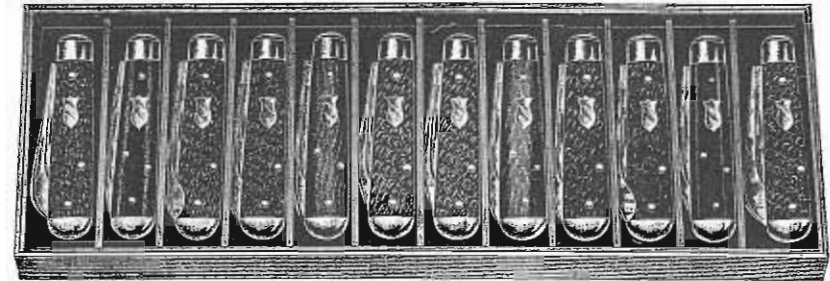
Assortment No. 3

(Sell to consumer at 60¢ to 65¢ each)

Two Blade Jack and Pen Knives; a variety of blade combinations; brass lined, ten Jacks with nickel silver shields and two Pens without shield; glaze finished blades; Cocobola, Ebony and Bone Stag handles.

One dozen packed in attractive velour lined display tray.

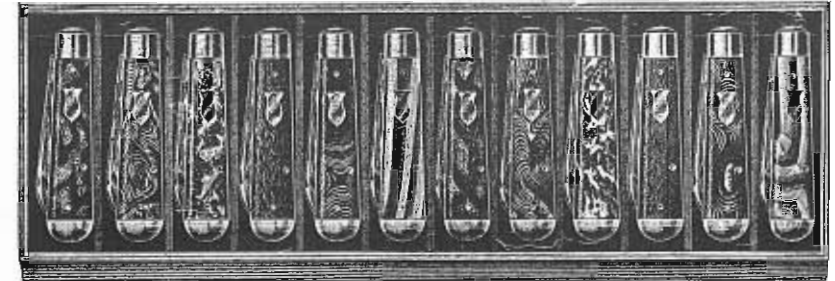
(Cuts  $\frac{1}{3}$  size)

Assortment No. 3 $\frac{1}{2}$ 

(Sell to consumer at 75¢ each)

Two Blade Medium Jack Knives, 3 $\frac{3}{8}$  inches long; a variety of blade combinations; brass lined; steel bolsters and caps; nickel silver shields; glaze finished blades; Cocobola, Ebony and Bone Stag handles.

One dozen packed in attractive velour lined display tray.

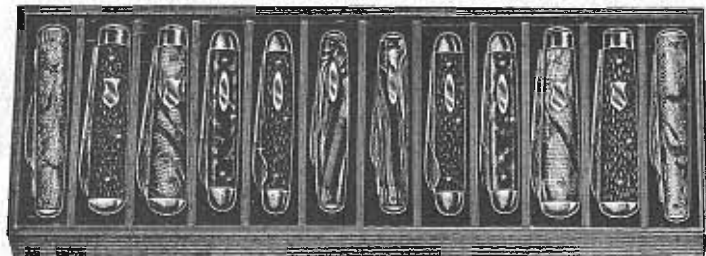
Assortment No. 3 $\frac{1}{2}$ AC

(Sell to consumer at 85¢ each)

Two Blade Medium Jack Knives, 3 $\frac{3}{8}$  inches long; pen and spear pocket blades; brass lined; steel bolsters and caps; nickel silver shields; large blades crocus polished on one side; Assorted Celluloid handles.

One dozen packed in attractive velour lined display tray.

(Cuts  $\frac{1}{3}$  size)

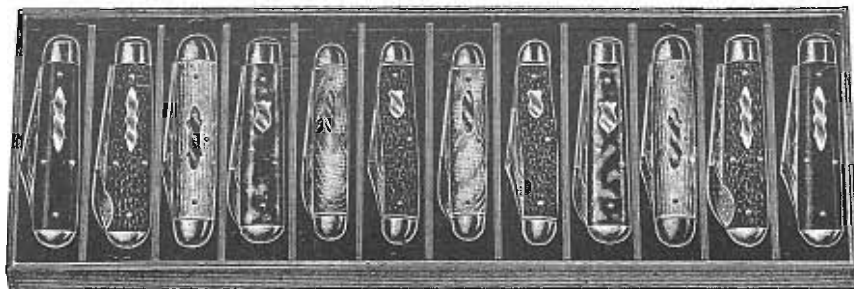


Assortment No. 4

(Sell to consumer at \$1.00 to \$1.25 each)

Two Blade Small Pocket Knives; pen and spear pocket blades; brass lined; nickel silver bolsters and shields; cleaned inside; large blades crocus polished on one side; Bone Stag and Assorted colors of Celluloid handles.

One dozen packed in attractive velvet lined display tray.



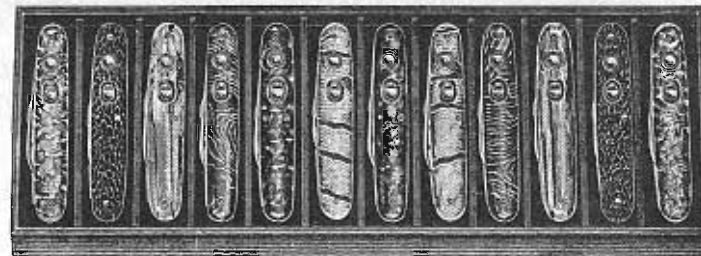
Assortment No. 5

(Sell to consumer at \$1.25 to \$1.50 each)

Two Blade Medium and Large Jack Knives; a variety of blade combinations; brass lined; nickel silver bolsters, caps and shields; cleaned inside; large blades crocus polished on one side; Bone Stag, Ebony and Assorted colors of Celluloid handles.

One dozen packed in attractive velvet lined display tray.

(Cuts  $\frac{1}{8}$  size)



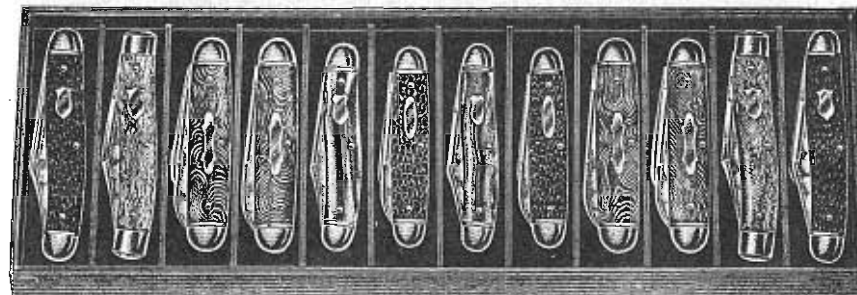
Assortment No. 6

(Sell to consumer at \$1.50 to \$1.75 each)

Two Blade Schrade Safety Push Button Knives,  $3\frac{3}{8}$  inches long; pen and spear pocket blades; brass lined; cleaned inside; large blades crocus polished on one side; Bone Stag and Assorted colors of Celluloid handles.

One dozen packed in attractive velvet lined display tray.

Assortment No. 6T—As above with nickel silver tips. Sell to consumer at \$1.75 to \$2.00 each.



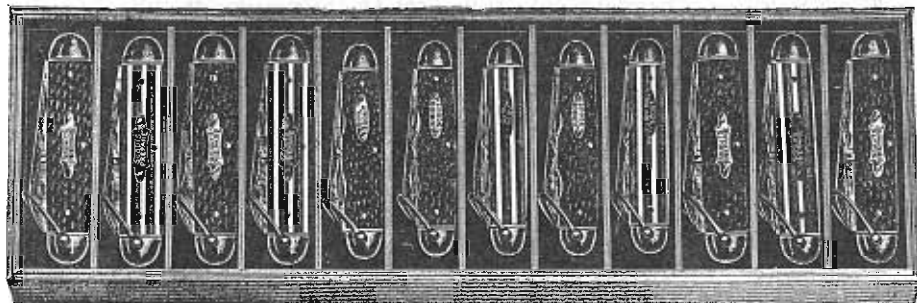
Assortment No. 7

(Sell to consumer at \$1.50 to \$2.00 each)

Three Blade Medium and Large Cattle and Premium Stock Knives; a variety of blade combinations; brass lined; nickel silver bolsters and shields; cleaned inside; large blades crocus polished on one side; Bone Stag and Assorted colors of Celluloid handles.

One dozen packed in attractive velvet lined display tray.

(Cuts  $\frac{1}{8}$  size)

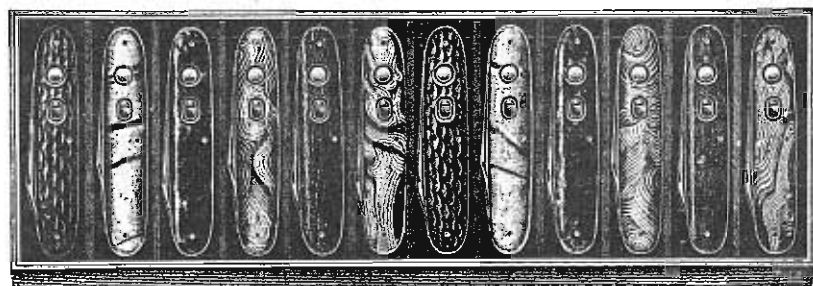


### Assortment No. 8

(Sell to consumer at \$1.50 to \$2.00 each)

Scout Knives: Boy Scouts—Girl Scouts—Junior Boy Scouts. Four blades (can opener, screw driver, cap lifter, wire scraper, punch and large cutting blade); brass lined; nickel silver bolsters, shields and shackles; cleaned inside; large blade crocus polished on one side and etched; Bone Stag and Red-White-Blue striped Celluloid handles.

One dozen packed in attractive velvet lined display tray.



### Assortment No. 9

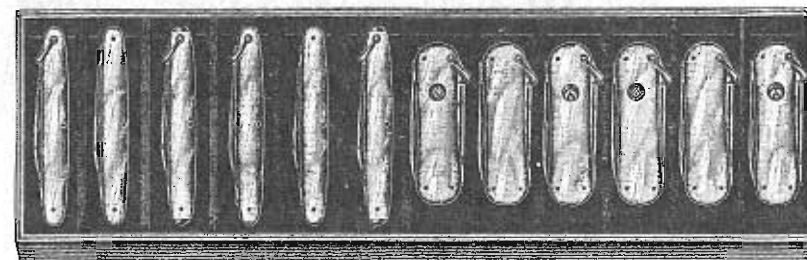
(Sell to consumer at \$1.75 to \$2.00 each)

Two Blade Schrade Safety Push Button Knives,  $3\frac{3}{4}$  inches long; a variety of blade combinations; brass lined; cleaned inside; large blade crocus polished on one side; Bone Stag and Assorted colors of Celluloid handles.

One dozen packed in attractive velvet lined display tray.

Assortment No. 9T—As above with nickel silver tips. Sell to consumer at \$2.00 to \$2.25 each.

(Cuts  $\frac{1}{8}$  size)



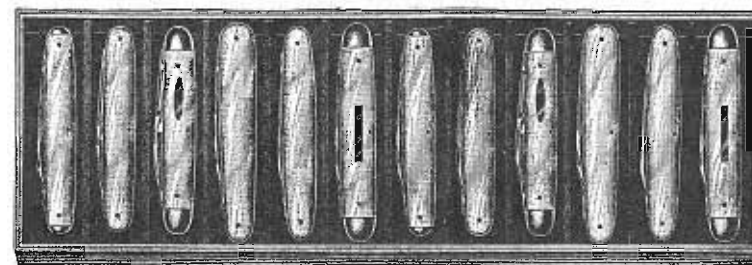
### Assortment No. 10

(Sell to consumer at \$2.00 to \$2.50 each)

An assortment of small pearl handled pocket knives; 2 blades; with and without shackles and emblems; brass lined or nickel silver lined, with milled edges; nickel silver shackles; cleaned inside; blades full crocus polished; Mother of Pearl handles.

(Important—Refer to page 68 for list of Emblems carried in stock and then specify Organization or Lodge for which Emblem is wanted).

One dozen packed in attractive velvet lined display tray.



### Assortment No. 11

(Sell to consumer at \$2.25 to \$2.75 each)

An assortment of medium size pearl handled pocket knives; ten with 2 blades—pen and spear pocket; two with 3 blades—pen, spear pocket and nail file; brass lined or nickel silver lined; some with nickel silver bolsters or tips and some with shields; cleaned inside; some knives have blades full crocus polished and some have large blade crocus polished on one side; Mother of Pearl handles.

One dozen packed in attractive velvet lined display tray.

(Cuts  $\frac{1}{8}$  size)

## EMBLEM KNIVES

Knives with Emblems mounted on handles are shown on pages 40, 42 and 43 of this catalog. Emblems of the following Organizations or Lodges are carried in stock ready for mounting.

Eastern Star	Loyal Order Moose
Elks	Masonic—Master Mason (Blue Lodge)
Fraternal Order of Eagles	“ —Royal Arch Chapter
Grotto	“ —Knights Templar
Junior Order United American Mechanics	“ —Shrine Mine Workers
Kiwanis	Modern Woodmen of America
Knights of Columbus	Odd Fellows
Knights of Malta	Redmen
Knights of Pythias	Rotary Club
Ku Klux Klan	United Commercial Travelers

NOTE.—Emblems of Organizations or Lodges not listed above can be supplied provided a sufficiently large quantity is ordered.

### POCKET KNIVES FOR ADVERTISING PURPOSES

Special Emblems of Trade Marks, Slogans or Names can be supplied in quantities of 25 dozen or more. Also an advertisement can be placed upon a pocket knife in one of the following ways, etchings on blades; imprinting on handles of both nickel silver or celluloid; engraving on mother-of-pearl, sterling silver, celluloid or metal handles; stampings on shields; printing underneath clear celluloid handles; full particulars regarding any of the above on application. As most advertising problems embody special features and conditions each must be given special consideration. Therefore if the quantity wanted is stated and the advertising matter desired is specified we can give specific information on your requirements.

There is nothing more lasting or personal than an advertisement carried on a pocket knife.

## To the Salesman Who Sells SCHRADE POCKET KNIVES TO THE CONSUMER

It is the duty of every dealer or salesman who sells a pocket knife, to advise the purchaser on the care that it should have. If the following points are briefly impressed, it will insure long life to the knife, avoid abuse of the same and rarely will a customer be dissatisfied.

**TO SHARPEN**—Use a good oil stone or whetting hone, one that is medium fine is best. It is important to hold the blade at a slight angle to the face of the stone, about 20° is right, so a slight bevel along the cutting edge will be produced, the same as you will find on the blade when it is new. The operation of sharpening should be to draw the blade against the cutting edge from heel to point. A few drops of kerosene or “3 in 1” oil on the sharpening stone will help produce a scientific cutting edge. Under no circumstance should a rough stone or dry grinding wheel be used, as it will spoil the cutting edge. Do not lay the blade flat on the stone as it will produce a thin razor-like edge and not the one required for a pocket knife.

**GENERAL CARE**—A pocket knife, like any machine, requires lubrication, therefore **OIL THE JOINTS**. A drop of good oil in each joint of a knife occasionally is absolutely necessary for smooth operation, especially in the more delicate knives such as the lobster patterns, which have split springs, and the blades of which are on both sides. Pearl handle knives should not be used for rough, heavy work, especially the shadow and tip patterns, in which knives the rivets of the blades go through the pearl scales which are easily broken, but if properly used the pearl scales will not break.

**RUST**—Many pocket knives are ruined by allowing them to become badly rusted on the inside. This can be avoided by an occasional cleaning with an oiled cloth or chamois skin, the same as a gun is kept in good condition. Moisture is the principal cause of the rust, therefore all dealers located at, or near, the seashore or in the South where the climate is damp and humid at times, should emphasize the necessity of preventing rust. If the above suggestions are followed a **SCHRADE** pocket knife will give long and satisfying service.

## INDEX

	Pages
Advertising Knives . . . . .	68
Assortments . . . . .	62-67
Automobile Knives . . . . .	10-11-22-28
Camper's Knives . . . . .	22-28
Carpenters Knife . . . . .	28
Cattle Knives, 3 $\frac{3}{8}$ " long . . . . .	23-24-25
"    "    3 $\frac{5}{8}$ "    "    . . . . .	20-21
Chain Knives, 3 $\frac{1}{4}$ " long . . . . .	29-30
"    "    3 $\frac{3}{8}$ "    "    . . . . .	17
"    "    3 $\frac{1}{2}$ "    "    . . . . .	26-27
"    "    3 $\frac{5}{8}$ "    "    . . . . .	10
Congress Knives, 3" long . . . . .	44
"    "    , 3 $\frac{1}{2}$ " long . . . . .	44-45
Easy Opener Knives 3 $\frac{1}{8}$ " long . . . . .	33-34
"    "    "    3 $\frac{1}{4}$ "    "    . . . . .	31
"    "    "    3 $\frac{3}{8}$ "    "    . . . . .	18
"    "    "    3 $\frac{1}{2}$ "    "    . . . . .	27
"    "    "    3 $\frac{5}{8}$ "    "    . . . . .	10
Electricians Knives . . . . .	11-22
Emblem Knives . . . . .	40-42-43-68
Florists Knife . . . . .	19
Hunting Knives, 3 $\frac{7}{8}$ " long . . . . .	50
"    "    , 4" long . . . . .	46
"    "    4 $\frac{1}{2}$ "    "    . . . . .	48
"    "    4 $\frac{7}{8}$ " long, Safety Push Button . . . . .	57
Jack Knives, 3 $\frac{1}{2}$ " long, Balloon Pattern . . . . .	44
"    "    3 $\frac{3}{8}$ "    "    Barlow    "    . . . . .	15-16
"    "    3 $\frac{1}{8}$ "    "    Easy Opener . . . . .	33-34
"    "    3 $\frac{1}{4}$ "    "    "    "    . . . . .	31
"    "    3 $\frac{3}{8}$ "    "    "    "    . . . . .	18
"    "    3 $\frac{1}{2}$ "    "    "    "    . . . . .	27
"    "    3 $\frac{5}{8}$ "    "    "    "    . . . . .	10
"    "    3 $\frac{1}{8}$ "    "    Equal End Pattern (Slim) . . . . .	33-34
"    "    3 $\frac{3}{8}$ "    "    "    "    "    . . . . .	23-24
"    "    3 $\frac{5}{8}$ "    "    "    "    "    . . . . .	19-20-21
"    "    4 $\frac{1}{4}$ "    "    "    "    "    . . . . .	50
"    "    3 $\frac{1}{2}$ "    "    Premium    "    . . . . .	48-49
"    "    3"    "    Serpentine    "    . . . . .	50
"    "    3 $\frac{3}{8}$ "    "    "    "    . . . . .	29
"    "    3 $\frac{1}{2}$ "    "    "    "    . . . . .	28-29
"    "    3 $\frac{7}{8}$ "    "    "    "    . . . . .	50
"    "    3 $\frac{1}{4}$ "    "    Straight Pattern . . . . .	29-31
"    "    3 $\frac{3}{8}$ "    "    "    "    . . . . .	16-18
"    "    3 $\frac{1}{2}$ "    "    "    "    . . . . .	25-28
"    "    3 $\frac{3}{4}$ "    "    "    "    . . . . .	11

## INDEX (Continued)

	Pages
Jack Knives, 4 $\frac{1}{2}$ " long, Straight Pattern . . . . .	48
"    "    3 $\frac{3}{8}$ "    "    Swell Handle Pattern . . . . .	11-12
"    "    4"    "    Texas Pattern . . . . .	46-47
"    "    Stainless Steel . . . . .	59
Lineman's (Electricians) Knives . . . . .	11
Lock Knives, Safety Push Button . . . . .	52-57
"    "    Electricians . . . . .	11
Navy Knife . . . . .	31
Office Knives, 3 $\frac{1}{4}$ " long . . . . .	38
"    "    3 $\frac{3}{8}$ "    "    . . . . .	23
"    "    3 $\frac{3}{8}$ "    "    Safety Push Button . . . . .	52
"    "    3 $\frac{1}{8}$ "    "    . . . . .	38
Pen Knives, Congress Pattern, 3" long . . . . .	44
"    "    "    "    3 $\frac{1}{2}$ "    "    . . . . .	44-45
"    "    Equal End, Heavy Pattern 3 $\frac{3}{8}$ " long . . . . .	23
"    "    Lobster Pattern, 2 $\frac{1}{4}$ " long . . . . .	40-41
"    "    "    (Sleeveboard) Pattern 3" long . . . . .	43-44
"    "    "    (Sunfish)    "    3"    "    . . . . .	41-43
"    "    Senator Pattern, 2 $\frac{7}{8}$ " long . . . . .	38-39
"    "    "    "    3 $\frac{1}{8}$ "    "    . . . . .	31-37
"    "    "    "    3 $\frac{1}{4}$ "    "    . . . . .	37
"    "    "    "    3 $\frac{5}{16}$ "    "    . . . . .	45
"    "    "    "    3 $\frac{7}{16}$ "    "    . . . . .	38
"    "    Sleeveboard Pattern, 3 $\frac{3}{8}$ " . . . . .	13-14-15
"    "    Stainless Steel . . . . .	59-60
Premium Stock Knives 3 $\frac{1}{2}$ " long . . . . .	49
"    "    "    4"    "    . . . . .	46-47-48
Pruning Knife . . . . .	50
Ring Opening Knives . . . . .	35
Safety Push Button Knives, 3 $\frac{3}{8}$ " long . . . . .	52-53-54
"    "    "    "    3 $\frac{3}{4}$ "    "    . . . . .	54-55-56
"    "    "    "    4"    "    . . . . .	57
"    "    "    "    4 $\frac{1}{4}$ "    "    . . . . .	57
"    "    "    "    4 $\frac{7}{8}$ "    "    . . . . .	57
Scissors Knives . . . . .	37
Scout Knives, Boy, 3 $\frac{1}{4}$ " long, 2 Blades with chain . . . . .	30
"    "    Junior 3 $\frac{3}{8}$ " long 4 Blades . . . . .	25
"    "    Girl 3 $\frac{3}{8}$ "    "    "    "    . . . . .	25
"    "    Boy 3 $\frac{1}{2}$ "    "    2    "    . . . . .	27
"    "    Boy 3 $\frac{5}{8}$ "    "    4    "    . . . . .	22
Stainless Steel Pen & Pocket Knives . . . . .	59-60

# SCHRADE SAFETY PUSH BUTTON KNIVES



TRADE **EVERLASTINGLY SHARP** MARK

## OUR GUARANTEE

We will replace without charge all knives made by us that are actually imperfect, either as to workmanship or material. Knives that are worn out or abused we will not replace.

# SCHRADE CUTLERY CO.

FACTORIES

WALDEN, N. Y.

MIDDLETOWN, N. Y.

Executive Offices—Walden, N. Y.